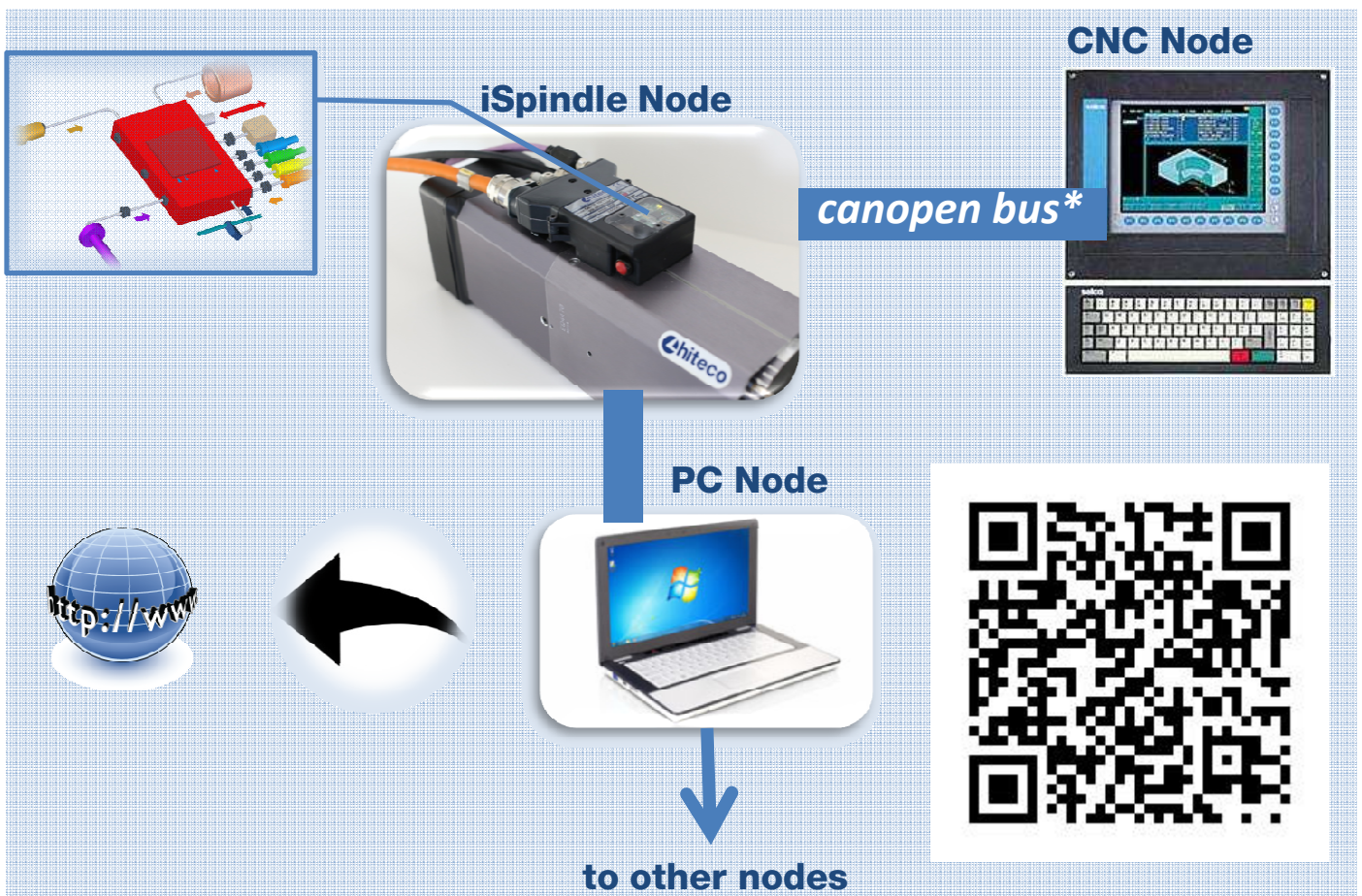


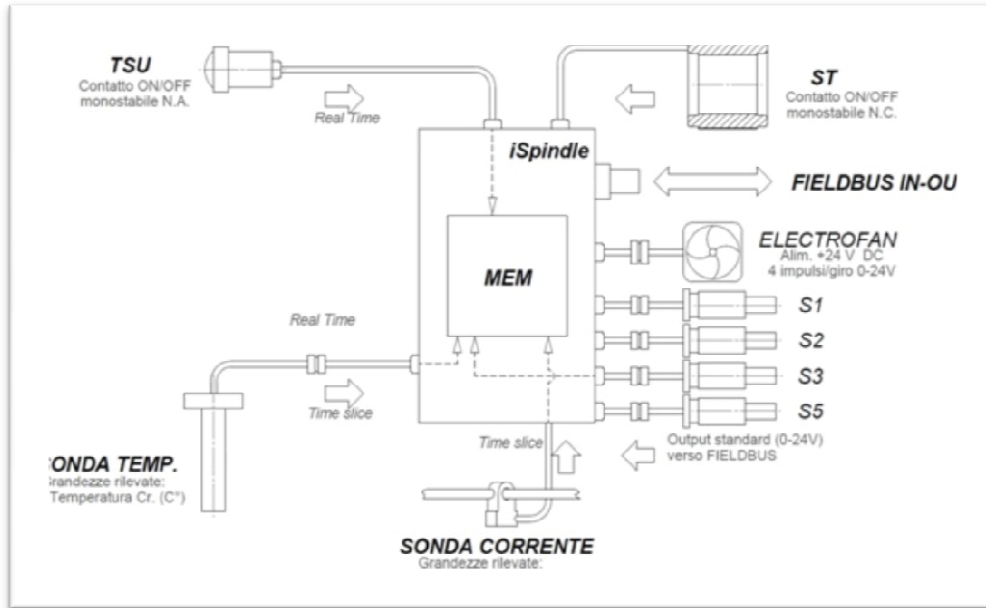
# iSPINDLE

## NETWORKING POWER

*Smart generation of PowerTech 300-400 spindles  
with real time control and diagnostic by CANOPEN interface\**



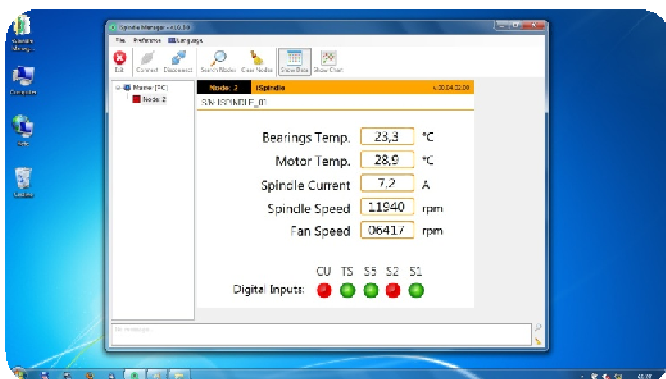
# iSpindle board working diagram



<b>Funzione / Function</b>	<b>Visualizzazione Monitoring</b>	<b>Visual. tabella range/tempo Record. table range/time</b>
<b>Segnali sensori logici S1, S2, S5 (*) Sensors output S1, S2, S5 (*)</b>	<b>YES</b>	<b>NO</b>
<b>Segnale velocità elettromandrino S3 Electrospindle speed output S3</b>	<b>YES</b>	<b>YES</b>
<b>Segnale rotazione elettroventola FAN Electrofan rotation feedback</b>	<b>YES</b>	<b>NO</b>
<b>Temperatura elettromandrino Electrospindle temperature</b>	<b>YES</b>	<b>YES</b>
<b>Temperatura cuscinetti (opz.) Bearings temperature (opt.)</b>	<b>YES</b>	<b>YES</b>
<b>Corrente assorbita elettromandrino Electrospindle current consumption</b>	<b>YES</b>	<b>YES</b>

(\*) Il sensore S5 è un optional per la serie PT3-400 / S5 sensor is optional for PT3-400 Series

## Monitoring



## Record. table

