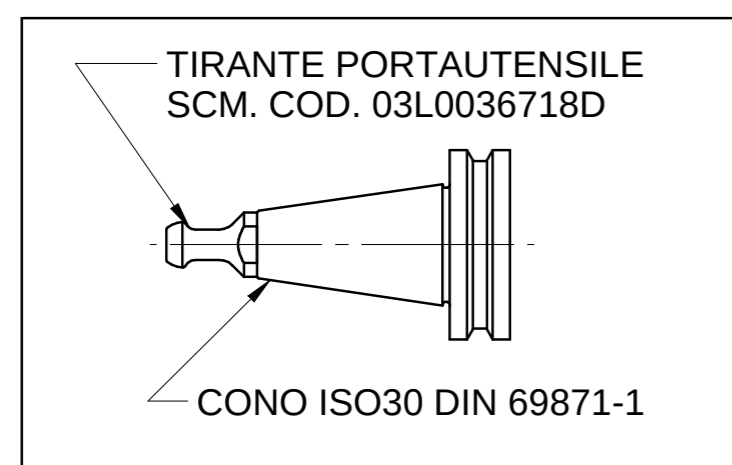
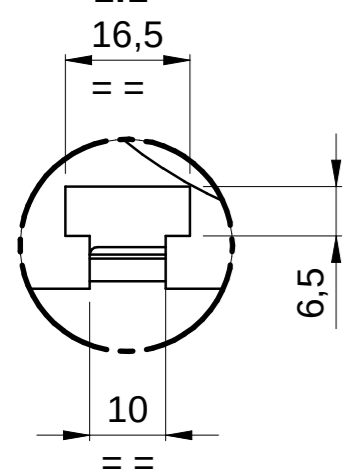
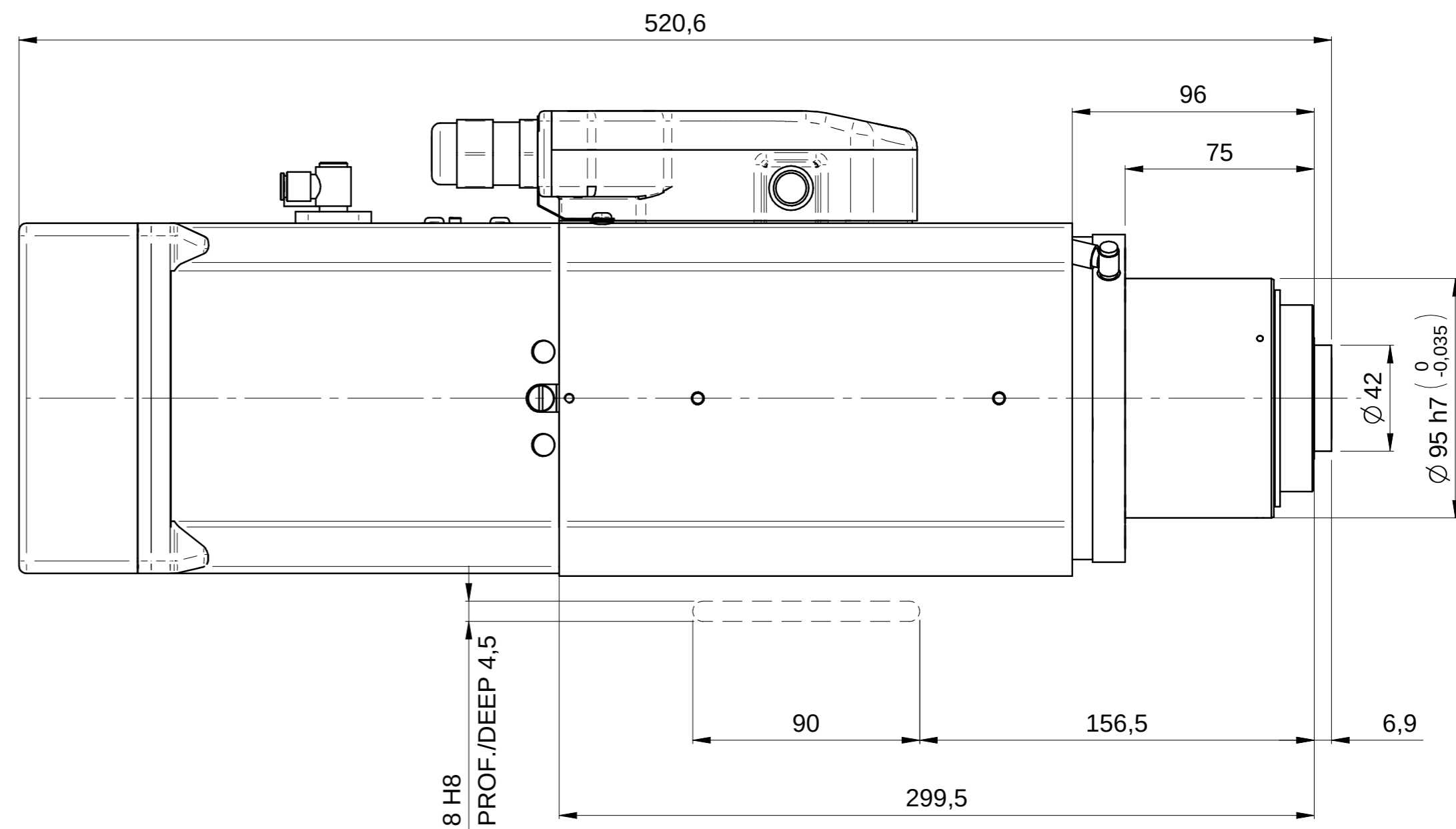


DETTAGLIO Z

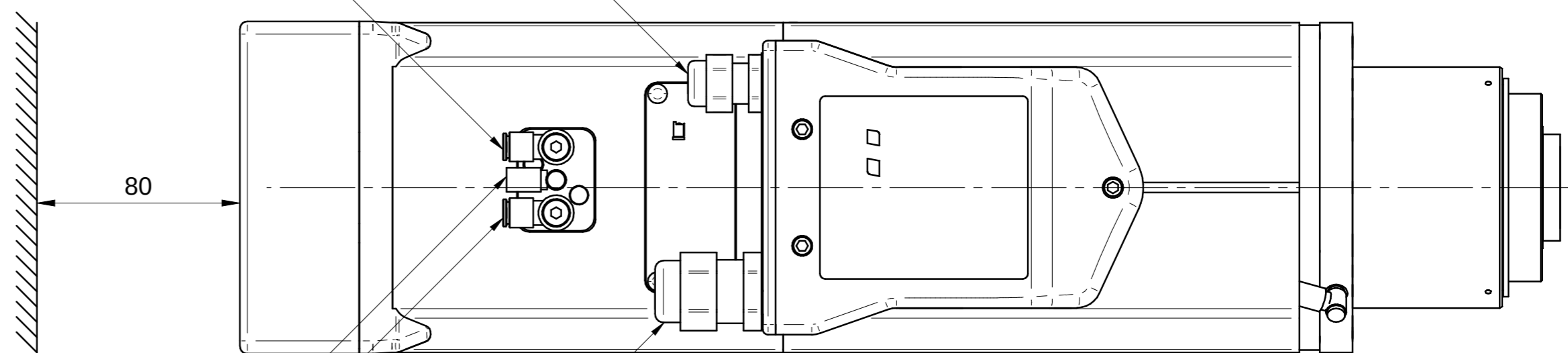
1:1



SOFFIO CONO: E6 ARIA SECCA 6-6,5 bar  
TAPER CLEANING: E6 AIR DRY 6-6,5 bar

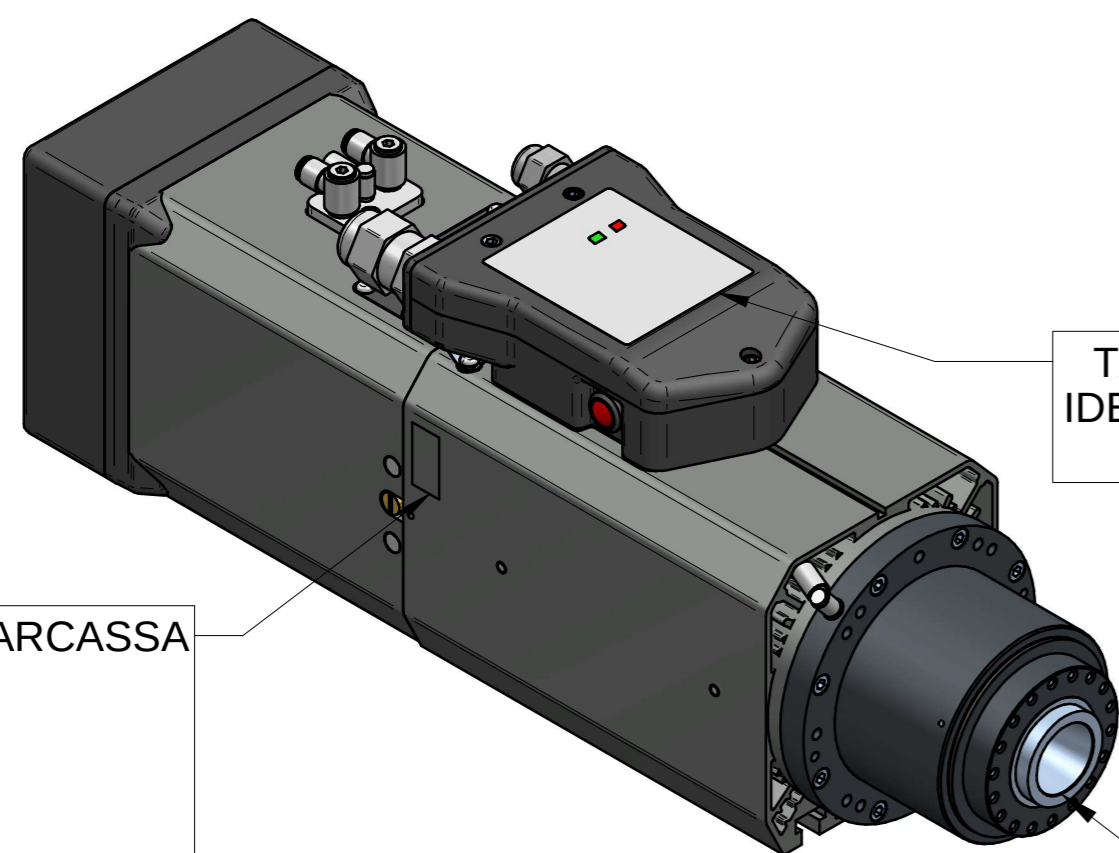


PRESSACAVO MET.M16 DIR. X EMC  
METALLIC GLAND M16 STRAIGHT FOR EMC



UTENSILE: E4 ARIA SECCA 6-6,5 bar  
OL: E4 AIR DRY 6-6,5 bar  
UTENSILE: E6 ARIA SECCA 6-6,5 bar  
TOOL: E6 AIR DRY 6-6,5 bar

PRESSACAVO MET.M25 DIR. X EMC  
METALLIC GLAND M25 STRAIGHT FOR EMC



TARGHETTA IDENTIFICATIVA

PUNZONARE SU CARCASSA

EI XXXX YY/ZZ

XX=SERIALE  
YY=MESE DI PROD.  
ZZ=ANNO DI PROD.

ATTACCO ISO 30 DIN 69871-1  
TOOL INTERFACE ISO30 DIN 69871-1

Massa: 24 Kg

Rev	Data / Date	Firma / Signature	Descrizione ultima modifica / Last change description	N° Modifica / Change ID
Caratteristiche tecniche non evidenziate secondo istruzioni operative SCM GROUP Specifications not shown according to SCM GROUP operation instruction			Verniciatura / Painting ( SCM specific ST231DTG ) <b>VER000</b>	Superficie / Surface (m²)
Struttura saldata secondo specifica SCM / Welded according to SCM specific : ST232DTG Future secondo specifica SCM / Mergers secondo SCM specific : ST233DTG			Trattamento Superficiale / Surface Treatment ( SCM specific ST234DTG )	
Quote senza indicazione di tolleranza, grado di precisione Shares without indication of tolerance, accuracy			<b>SCM Specifica ST2310DTG</b>	
Ultimo rilascio Latest release			Rugosità / Roughness	Trattamento Termico / Heat Treatment ( SCM specific ST234DTG )
Controllato Checker			<b>CF1</b> 3 0	Peso grezzo/Raw weight (kg) Ricavare da o Stato di fornitura / Based on or State of supply
Disegnato Designed			Smussi / chamfer	Materiale / Material ( SCM specific ST235DTG ) <b>Vedi Tabella</b>
<b>G.Franchino</b>			<b>16/05/2016</b>	
<b>HITECO</b> HIGH TECHNOLOGY COMPONENTS				
Denominazione / Item Name <b>ELETM QE-1F 5.5/6 20 I30 NC CB DV</b>				
Scala / Scale <b>1:1</b>		Codice / Item ID <b>QE.300.A20.00</b>		Rev <b>00</b> Status
				Tav. N. di N. <b>3/3</b>