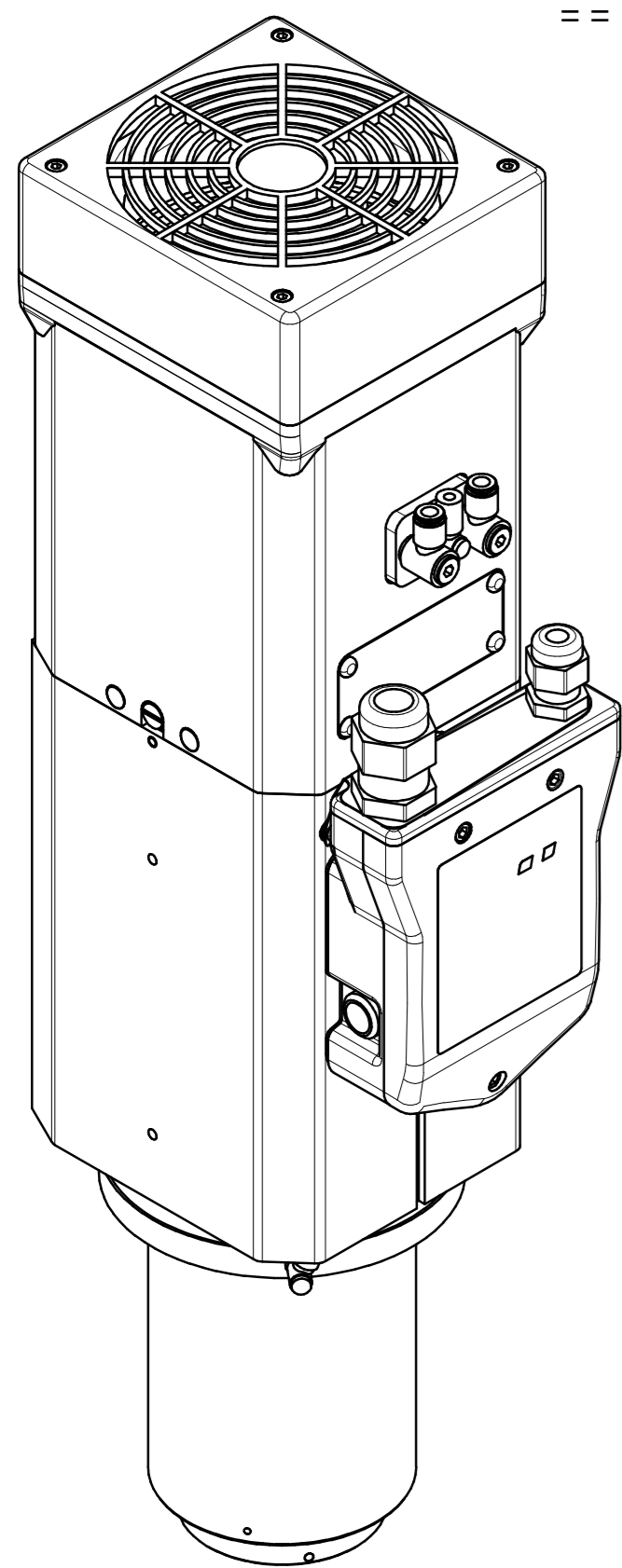
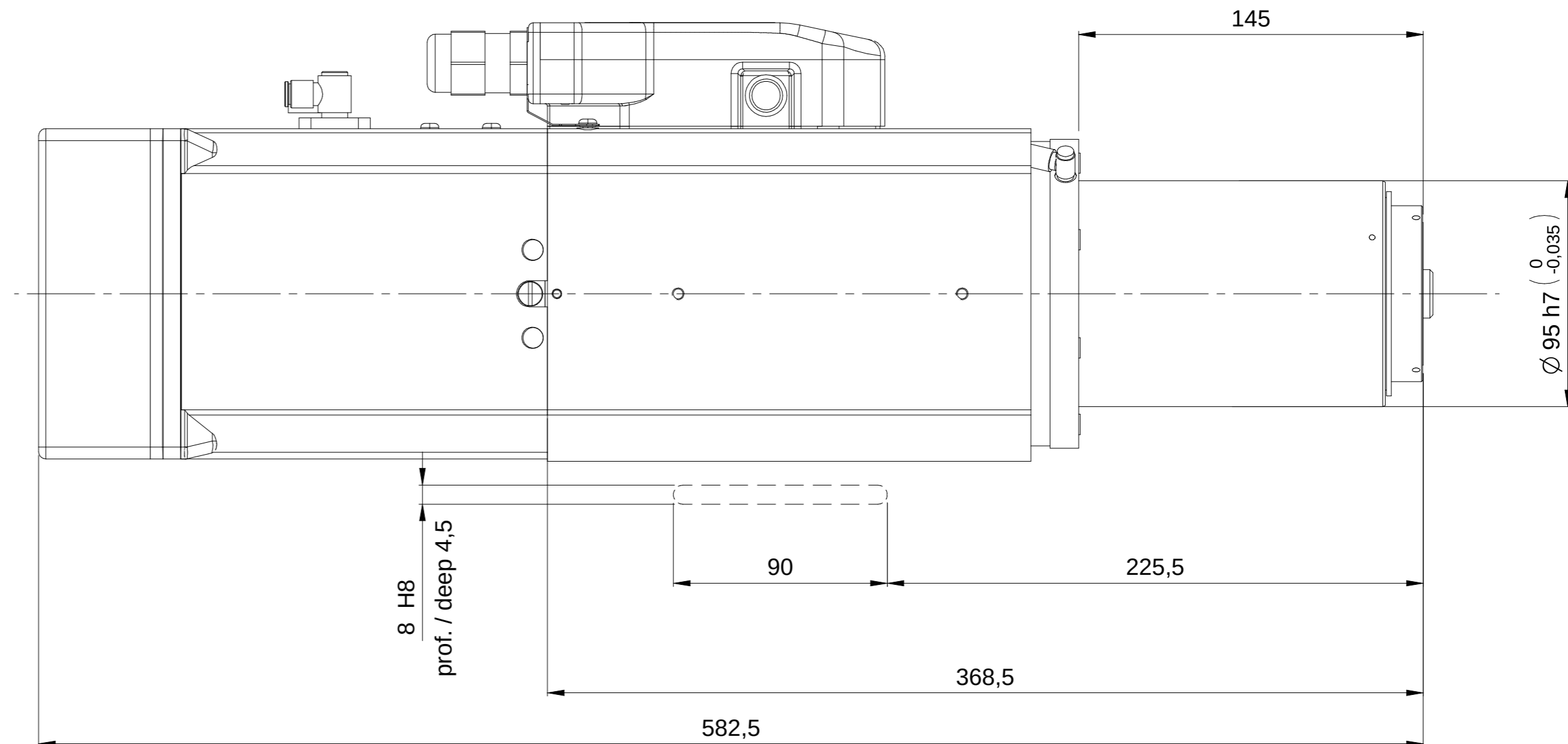
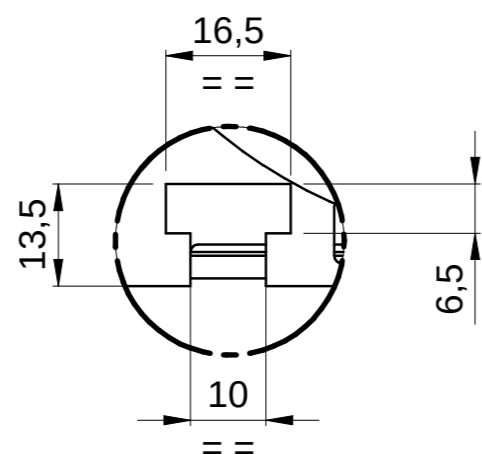


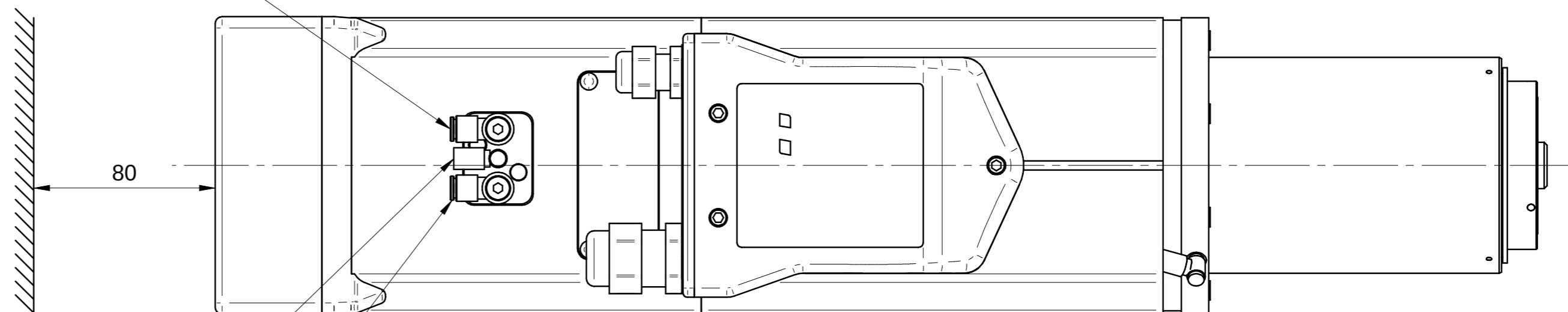
DETTAGLIO / DETAIL Z
1:1



SOFFIO CONO: E6 ARIA SECCA 6 bar
TAPER CLEANING: E6 AIR DRY 6 BAR

BLOCCO UTENSILE: E4 ARIA SECCA 6 bar
LOCK TOOL: E4 AIR DRY 6 BAR

SBLOCCO UTENSILE: E6 ARIA SECCA 6 bar
RELEASE TOOL: E6 AIR DRY 6 BAR



MASSA MASS: 26 kg

01	11/01/2016	G.Franchino	Ininfluente		
Rev	Data / Date	Firma / Signature	Descrizione ultima modifica / Last change description	N° Modifica / Change ID	
Caratteristiche tecniche non evidenziate secondo istruzioni operative SCM GROUP Specifications not shown according to SCM GROUP operation instruction			IO 231D1TG	Superficie / Surface (m²)	
Strutture saldate secondo specifica SCM / Welded according to SCM specific			ST232D1G	VER000	
Finiture secondo specifica SCM / Finishes secondo SCM specific			ST233D1G	Trattamento Superficiale / Surface Treatment (SCM specific ST234D1G)	
Quote senza indicazione di tolleranza, grado di precisione Shares without indication of tolerance, accuracy			mK - UNI EN 22768/1-2	Trattamento Termico / Heat Treatment (SCM specific ST234D1G)	
Ultimo rilascio Latest release		Firma / Signature	Data / Date	Rugosità / Roughness	
Controllato Checked				CF1 3 1	Peso grezzo/Raw weight (kg)
Disegnato Designed		G.Franchino	15/12/2015	Smussi / chamfer	Massa / Mass (kg) 29,868
Denominazione / Item Name			ELETM QE-1F 8/12 24 63F NL CB BT DV		
Scala / Scale		Codice / Item ID		Rev	Status
1:1		QE.300.A07.00		01	Tav. N. di N. 3/3

HITECO
HIGH TECHNOLOGY COMPONENTS