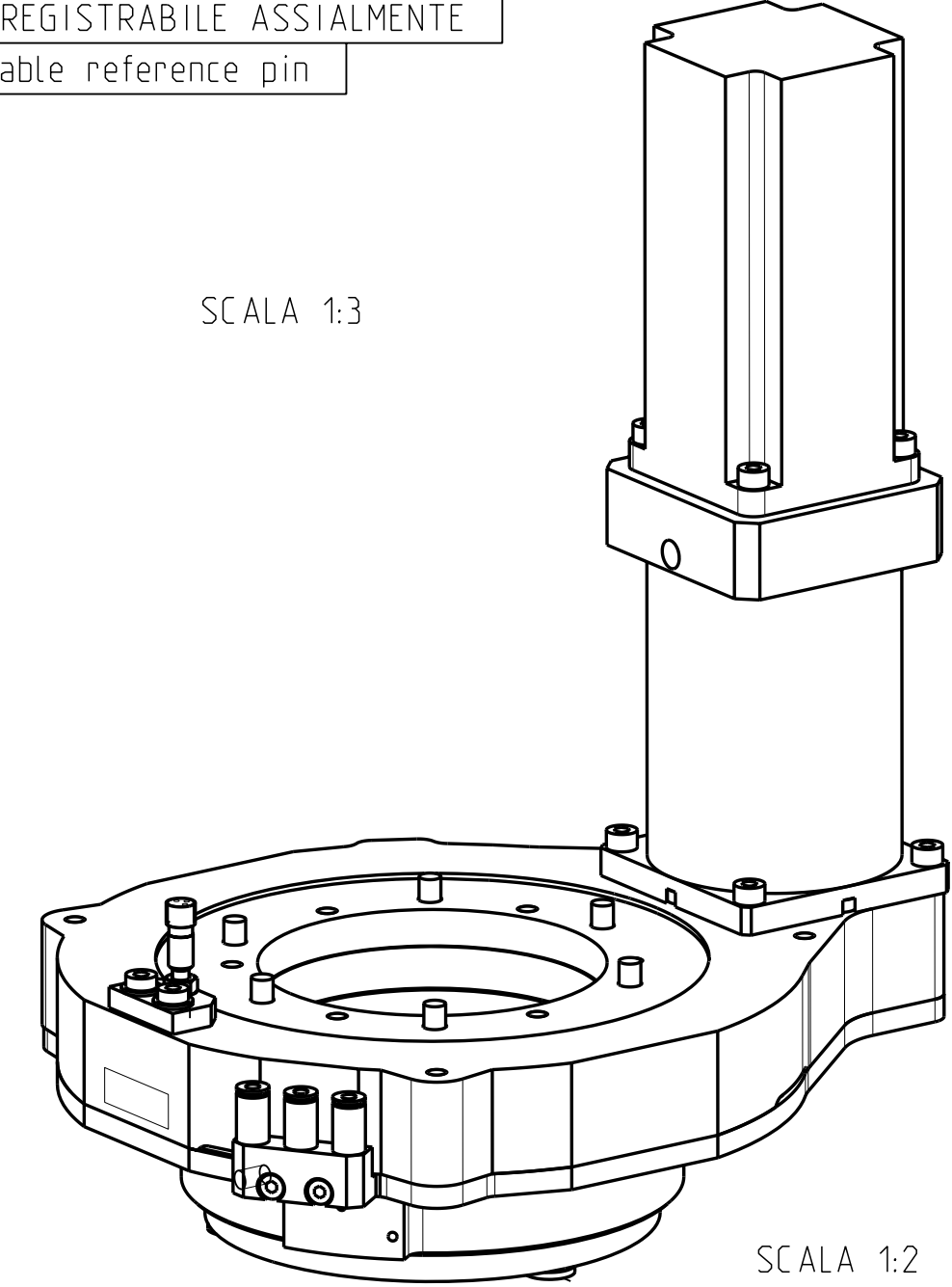
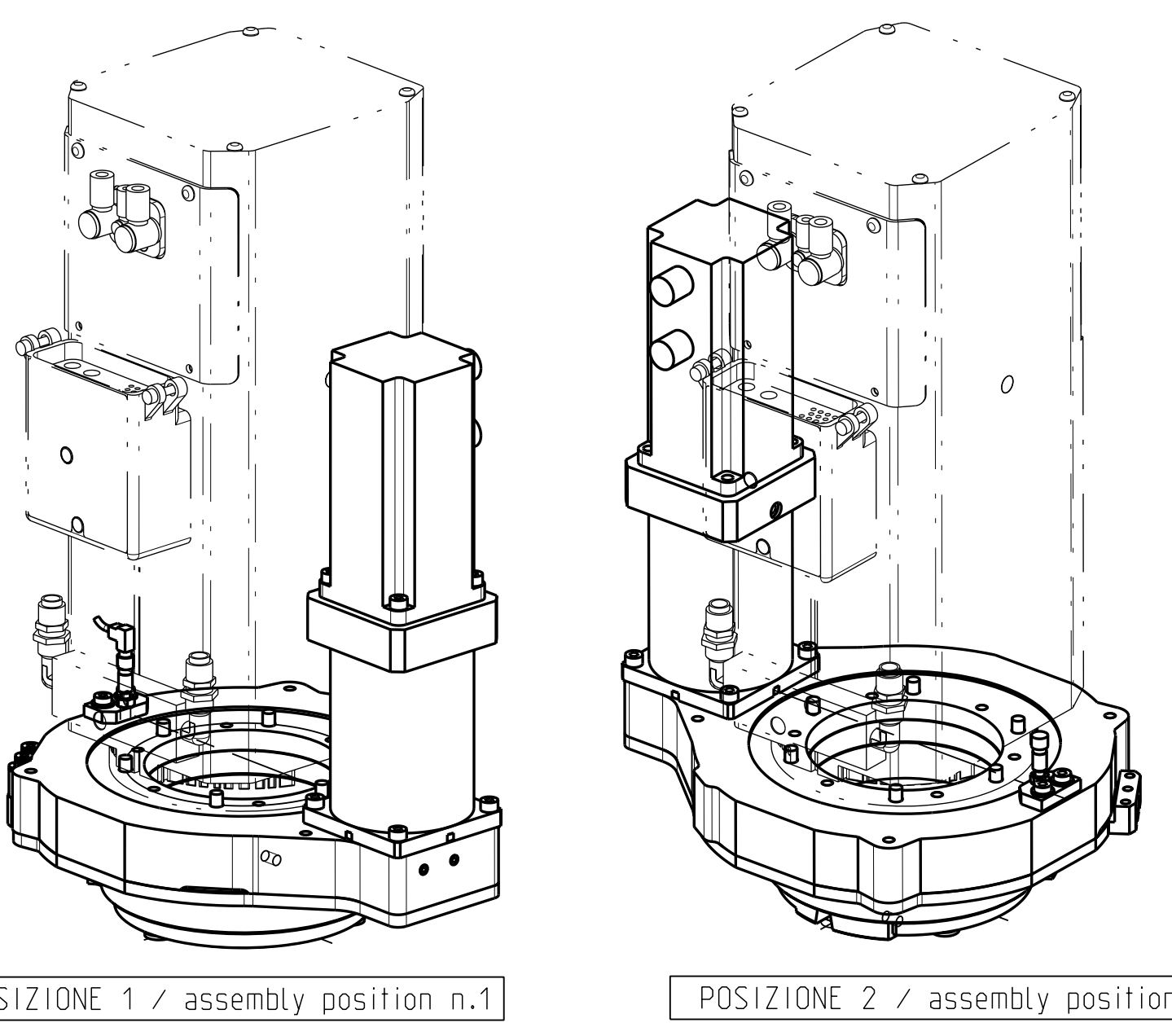
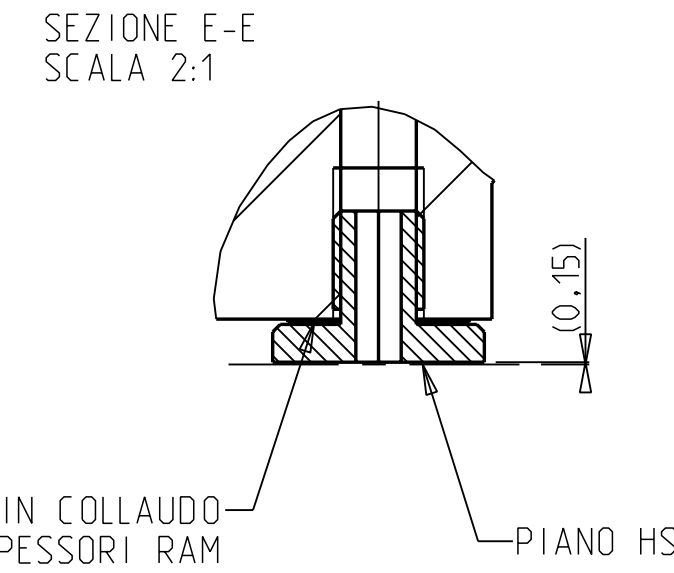
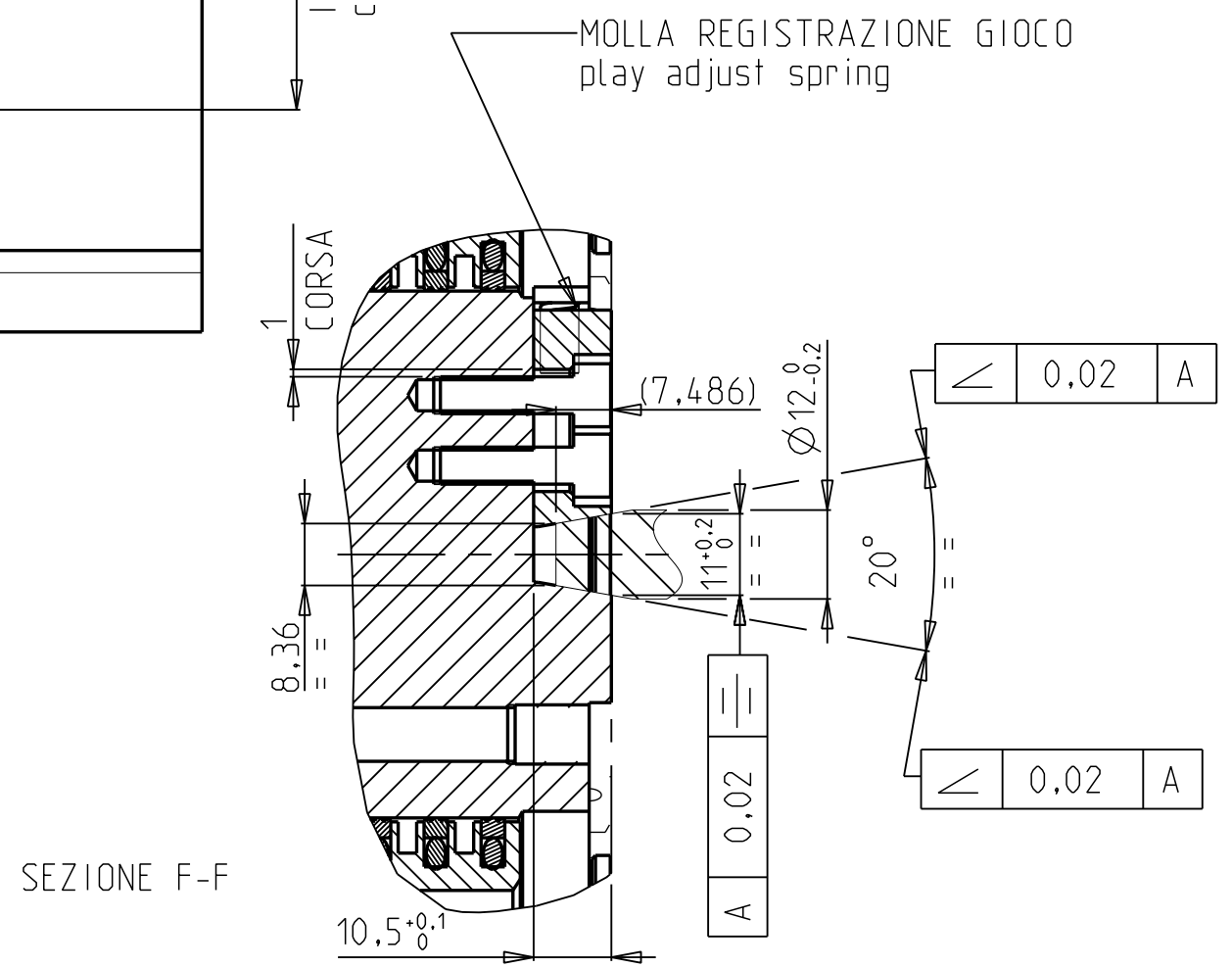
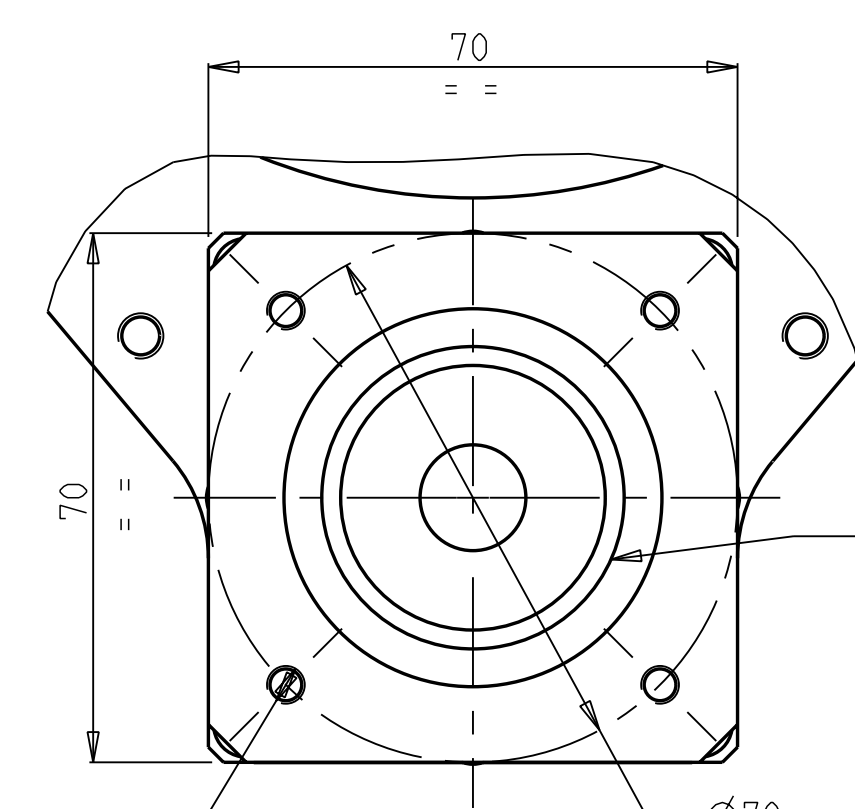
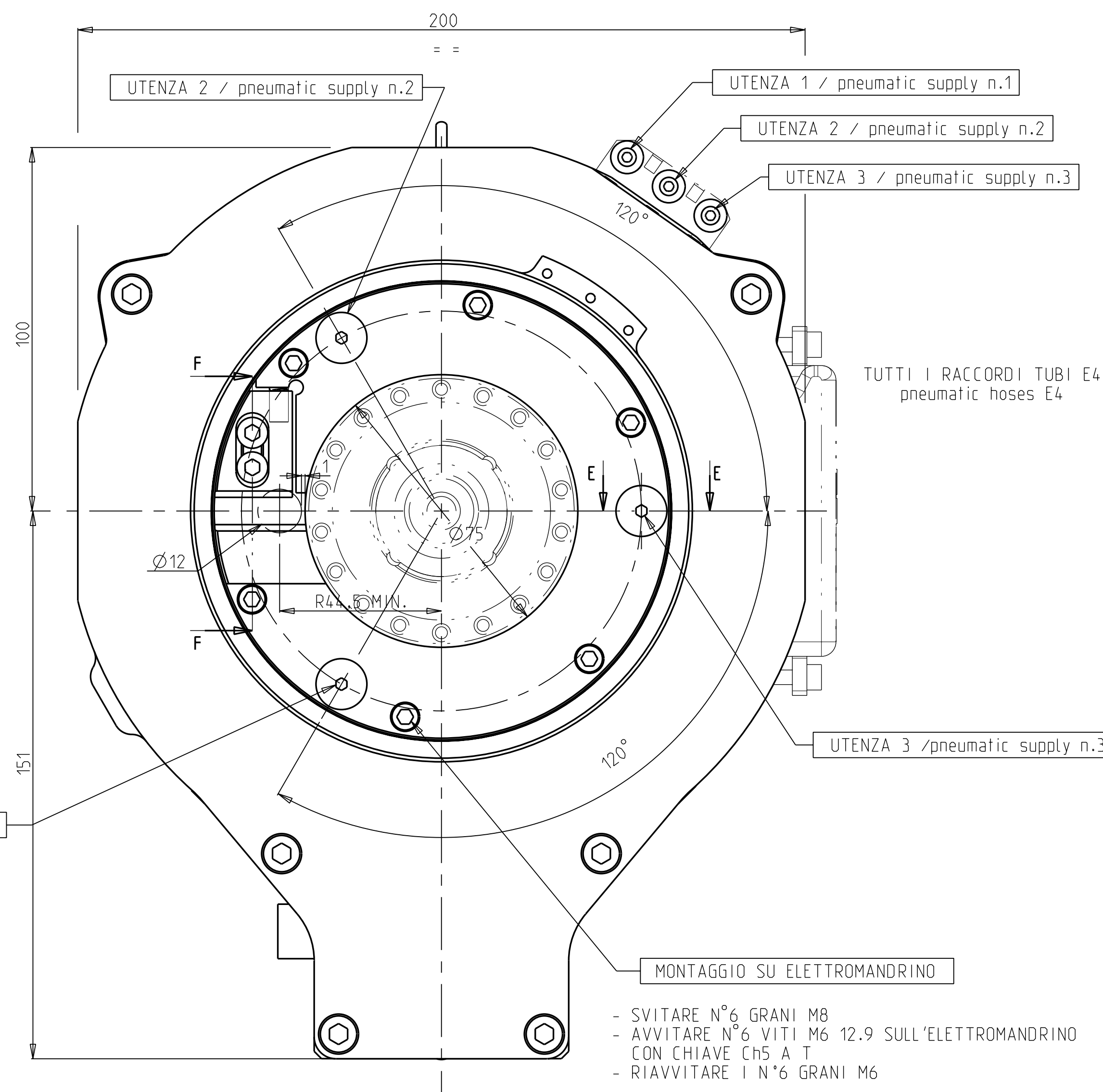
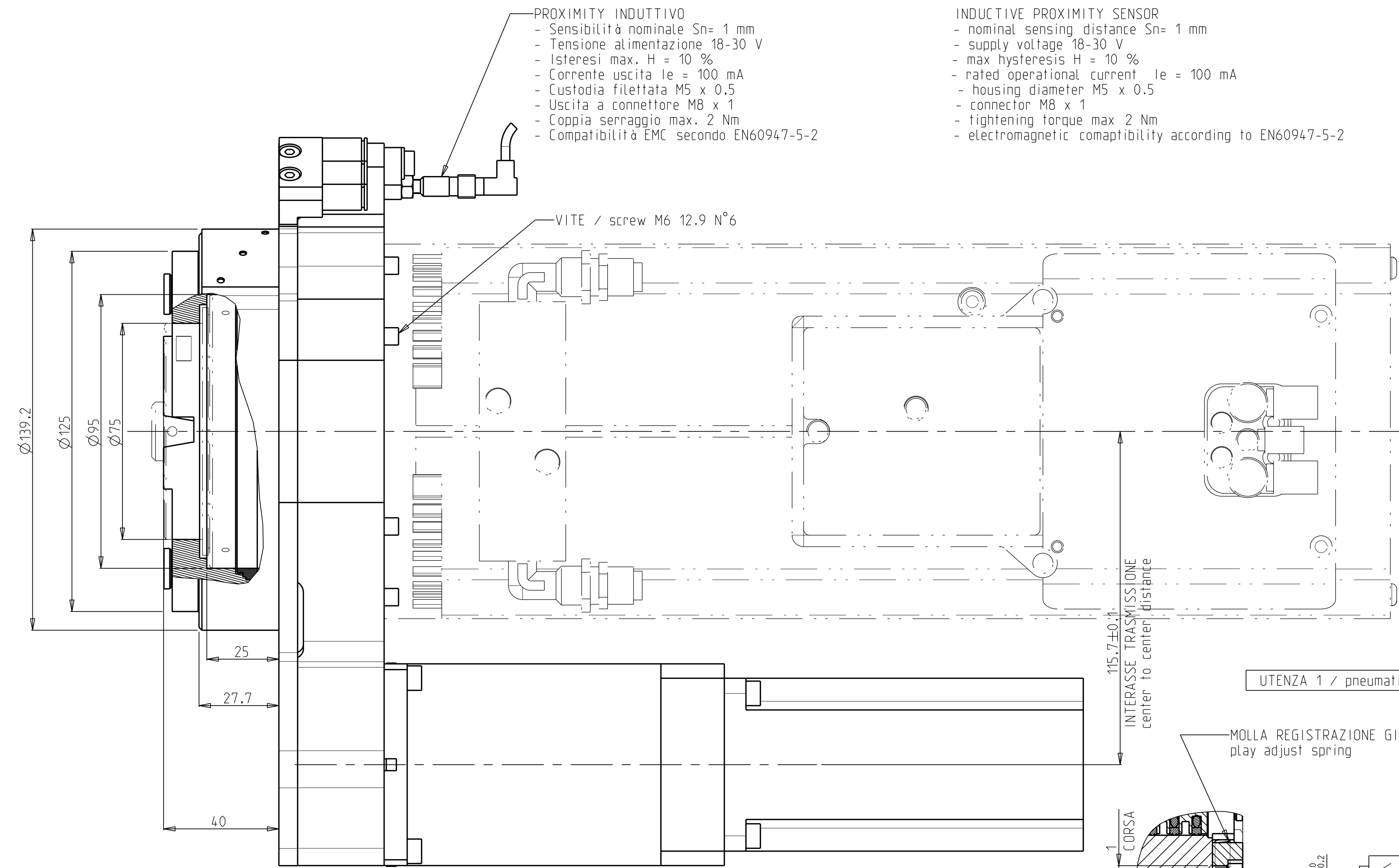


**PROXIMITY INDUTTIVO**  
 - Sensibilità nominale  $S_n = 1$  mm  
 - Tensione alimentazione 18-30 V  
 - Isteresi max.  $H = 10\%$   
 - Corrente uscita  $I_e = 100$  mA  
 - Custodia filettata M5 x 0,5  
 - Uscita a connettore M8 x 1  
 - Coppia serraggio max. 2 Nm  
 - Compatibilità EMC secondo EN60947-5-2

**INDUCTIVE PROXIMITY SENSOR**  
 - nominal sensing distance  $S_n = 1$  mm  
 - supply voltage 18-30 V  
 - max hysteresis  $H = 10\%$   
 - rated operational current  $I_e = 100$  mA  
 - housing diameter M5 x 0,5  
 - connector M8 x 1  
 - tightening torque max 2 Nm  
 - electromagnetic compatibility according to EN60947-5-2



DATI TECNICI PRINCIPALI / technical features	
RAPPORTO RIDUZIONE TOTALE / total reduction ratio	1:100
PESO / weight	14.0 Kg
COPPIA NOMINALE SERVOMOTORE / nominal servomotor torque	0.95 Nm
COPPIA DI SPUNTO SERVOMOTORE / max servomotor torque	3.82 Nm
VELOCITA' NOMINALE SERVOMOTORE / nominal servomotor speed	3000 rpm
VELOCITA' MASSIMA SERVOMOTORE / max servomotor speed	5000 rpm
GIOCO DI INVERSIONE MASSIMO / backlash	0.07°

INTERASSE PERNO  $\varnothing 12$  A R44,5  
 center to center distance between spindle and  $\varnothing 12$  pin 44.5

SERVOMOTOR MODEL YASKAWA SGMEV-03DDA61

CF2		Schema	
Scale	1:1	Massa (kg)	29.83
Disegnato	08/11/76	Disegnato	6/1/1976
Verificato		Verificato	
ASSE C 3 UTENZE HSH63F NC SERV. YASKAWA		N° 29L0350017C	