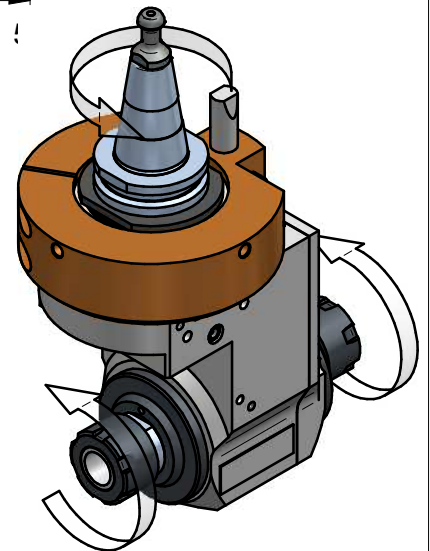
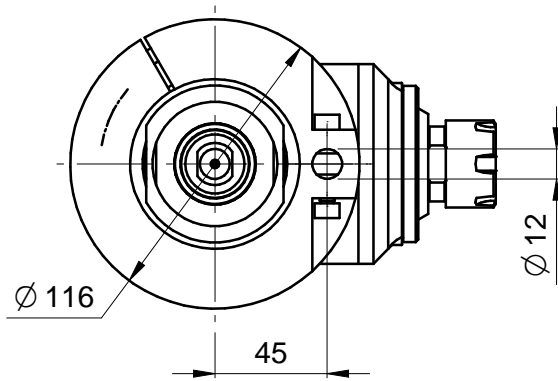
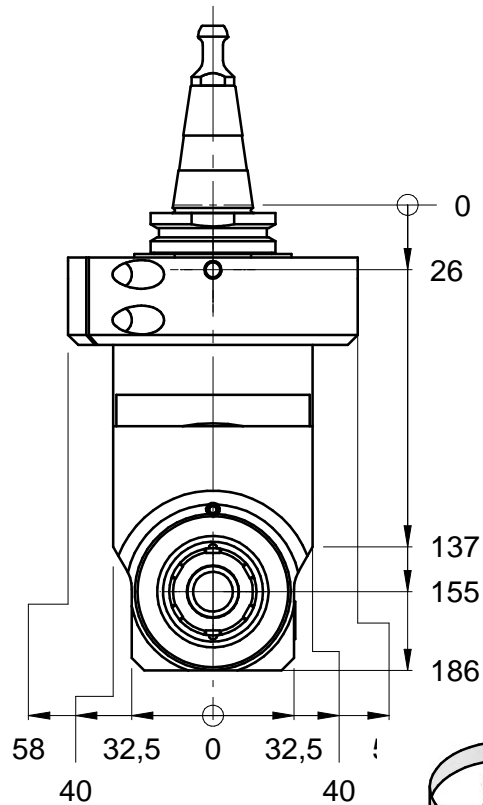
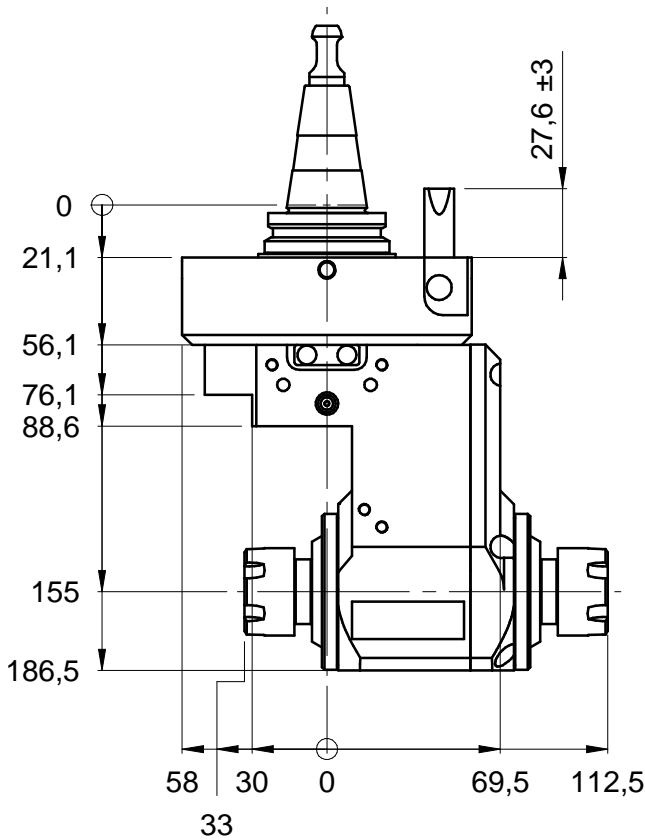


Unità Aggregata / Aggregate Unit : **Fast Line TWIN PRO ER25 H162**
 Codice / Code : **FL.TWINP.00/162LI30-BI**



Specifiche tecniche / Technical specifications

Attacco elettromandrino - Spindle coupling	ISO 30
Velocità rotazione elettromandrino - Spindle speed	6800 RPM MAX.*
Velocità rotazione utensile - Tool speed	18000 RPM MAX.*
Senso rotazione mandrino - Spindle rotation direction	VEDI DISEGNO - See drawing
Possibilità inversione rotazione mandrino - Possibility to change electrospindle direction	NO
Rapporto di trasmissione - Gear ratio	1:2.65
Tipo pinza - Collet type	2xER25 MINI
Diametro lama - Blade diameter	/
Diametro foro lama - Blade hole diameter	/
Peso - Weight	5,5 Kg
Lubrificazione - Lubrication	Grease KLUEBER NBU15
Temperatura di lavoro - Working temperature	75°C MAX
Connessione asse C /C axis connection type	BIESSE
Orientamento angolare/ Aggregate rotation	0-360° in continuo/continuous
* VEDERE MANUALE/see user manual	