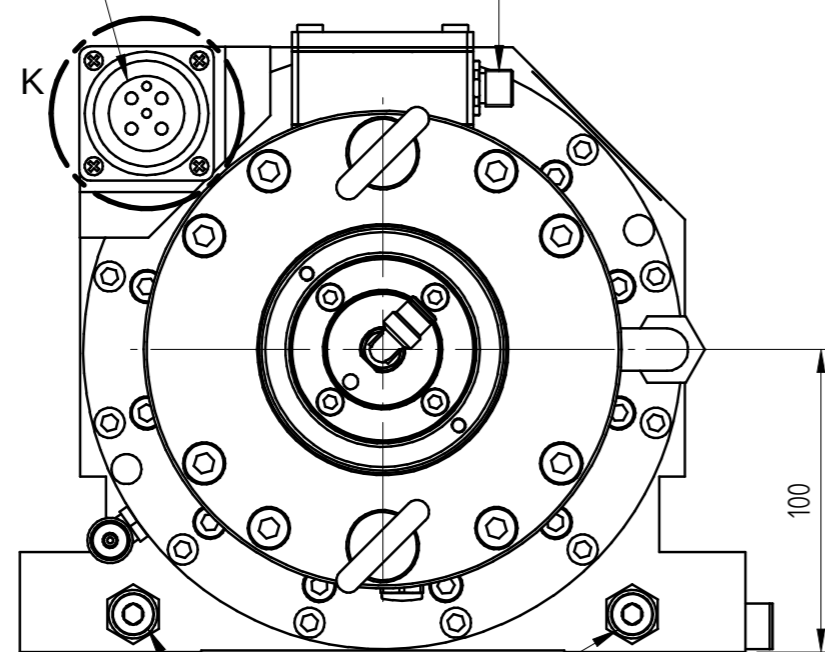
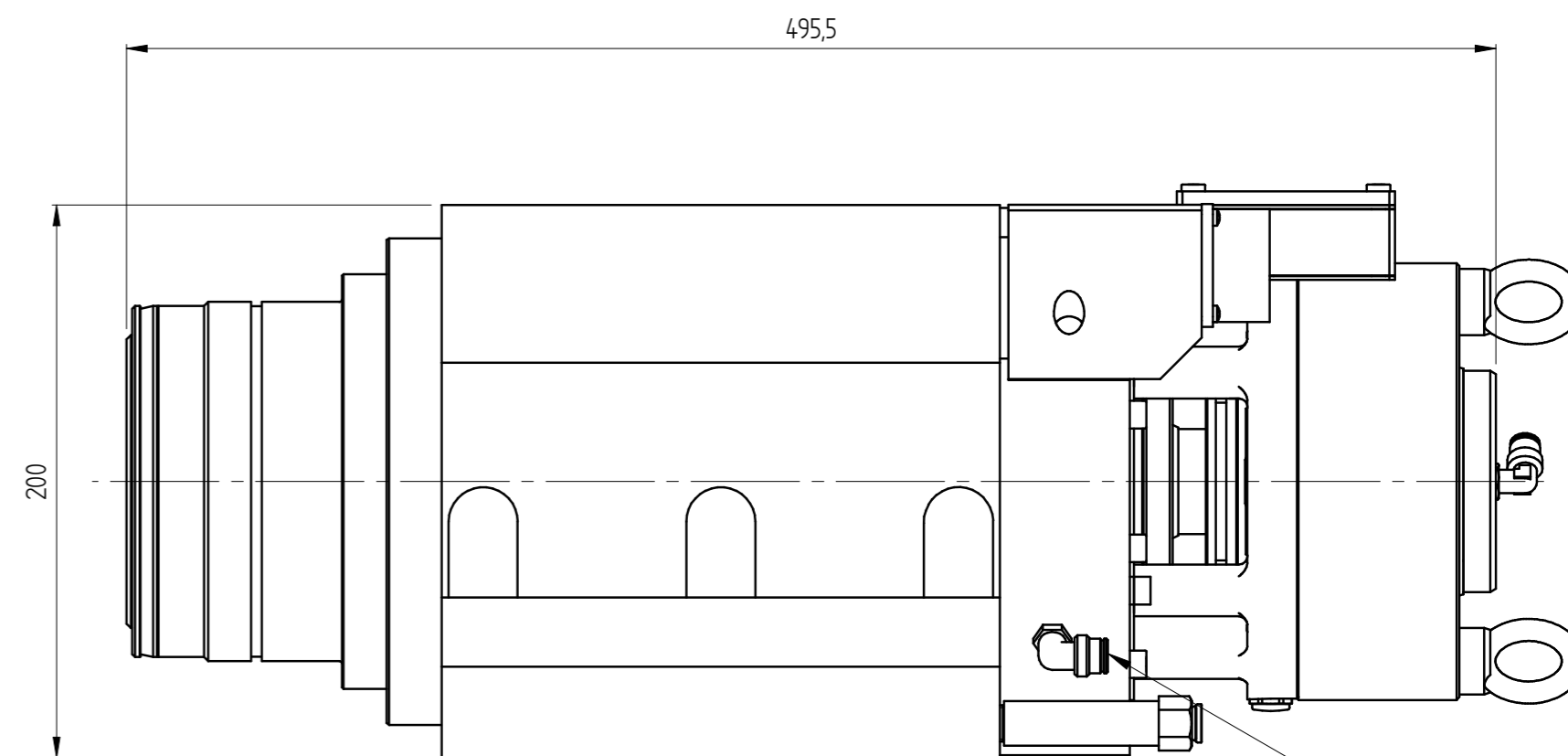


CONNETTORE SENSORI 5 CONTATTI M12
 SENSOR CONNECTOR 5 PIN M12

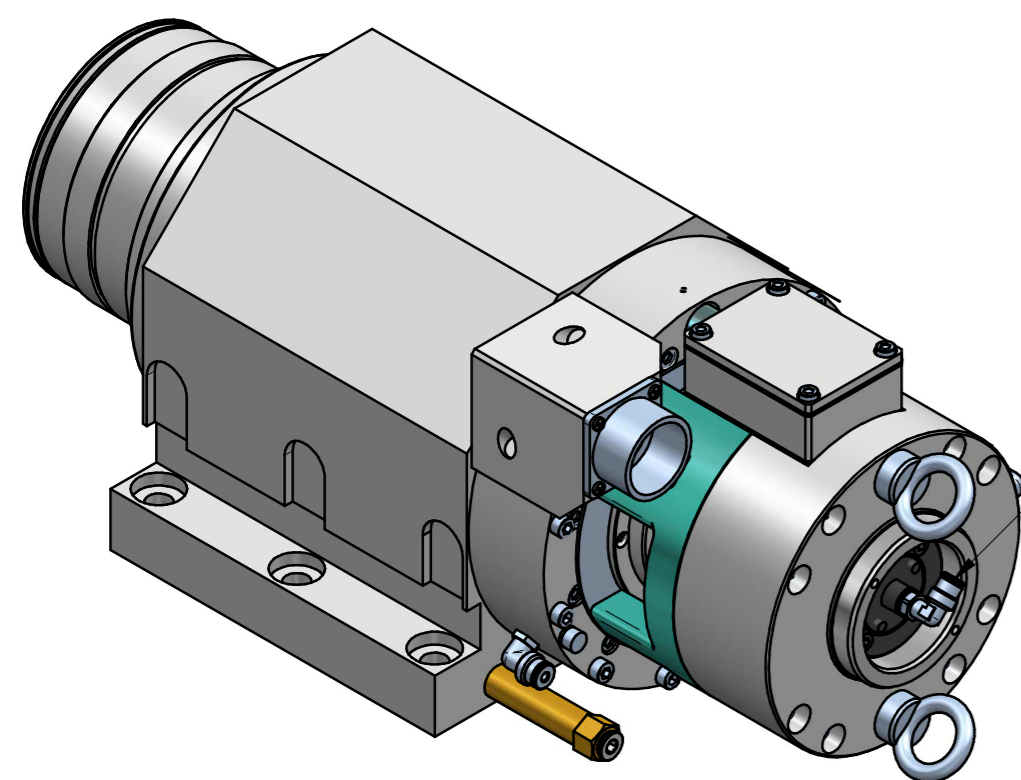
CONNETTORE DI POTENZA IT 3102 A
 POWER CONNECTOR IT 3102 A



LIQUIDO DI RAFFREDDAMENTO IN - OUT (PRESSIONE 4 - 6 bar)
 LIQUID COOLING IN - OUT (PRESSION 4 - 6 bar)

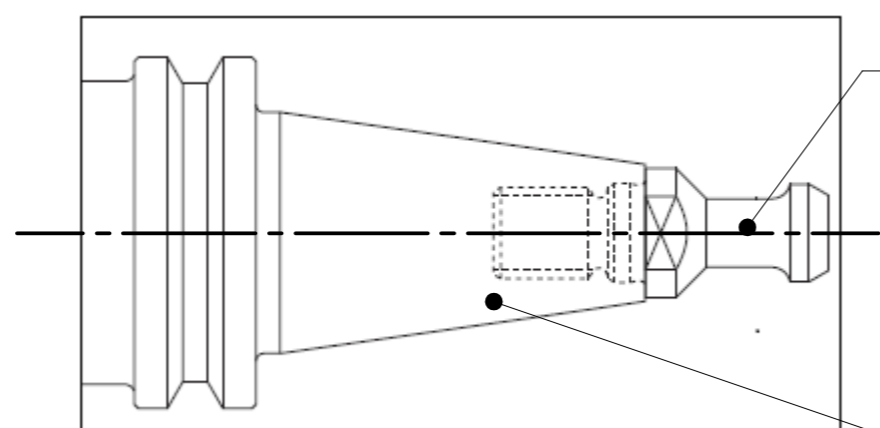
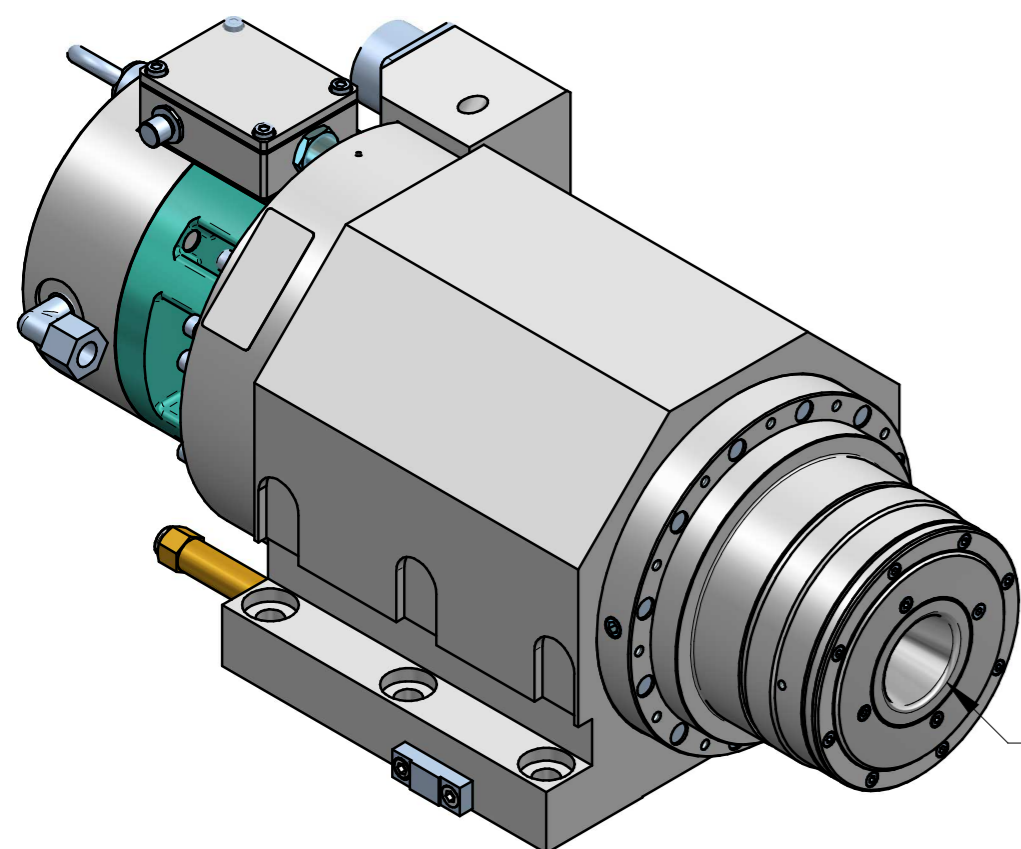
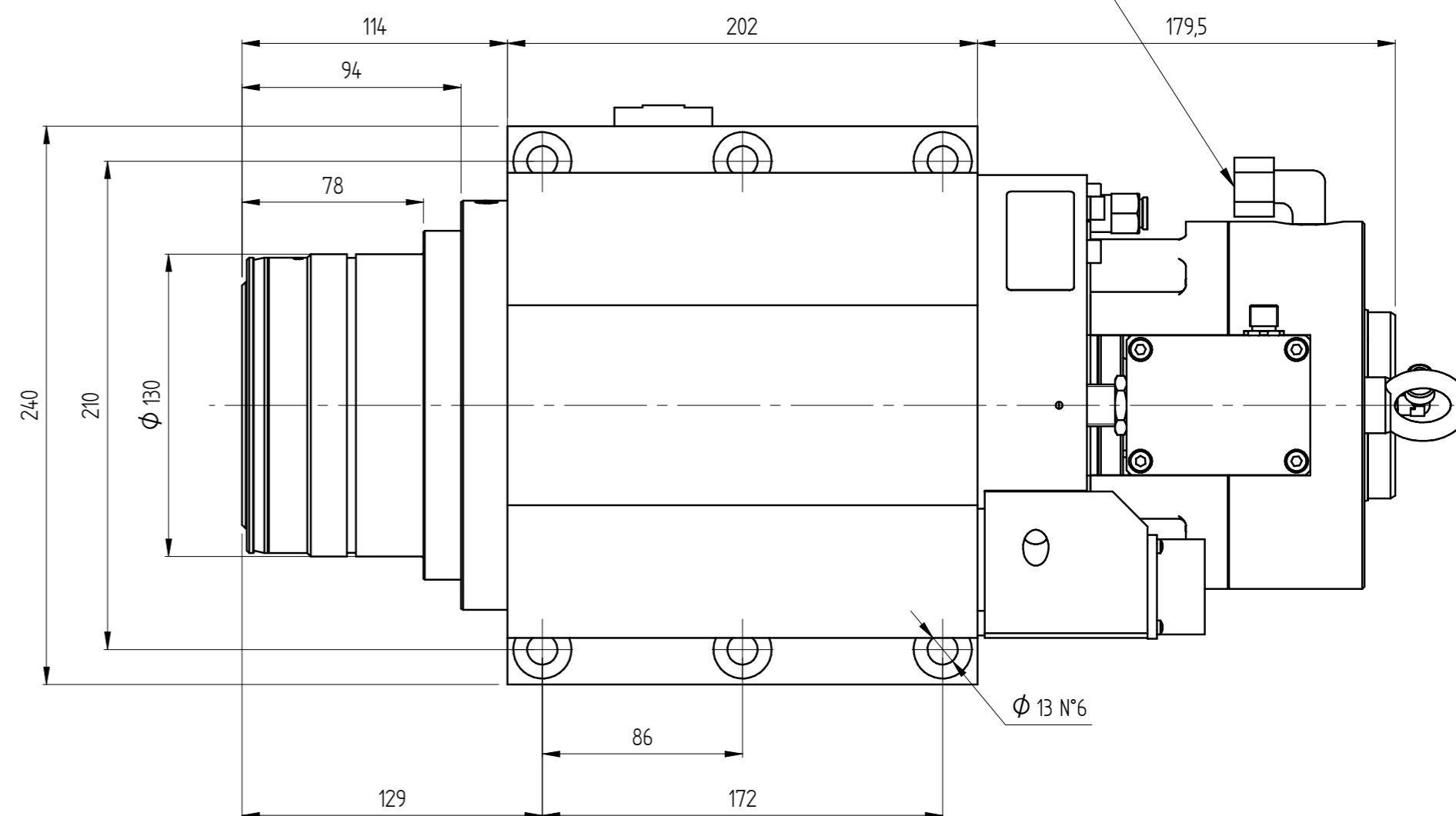


PRESSURIZZAZIONE: E4 Aria secca 6-6,5 bar
 PRESSURIZATION: E4 Dry air 6-6,5 bar



SOFFIO CONO : E6 6-6,5 bar
 TAPER CLEANING : E6 6-6,5 bar

SBLOCCO UTENSILE: G3/8 Olio 80-85 bar
 RELEASE TOOL: G3/8 Oil 80-85 bar



TIRANTE DIN 69872
 PULL-STUD DIN 69872

CONO ISO40 DIN 69871
 TAPER ISO40 DIN 69871

ATTACCO ISO40 DIN69871
TOOL INTERFACE ISO40 DIN69871

	Massa / Mass (kg) 74,691	Materiale / Material (SCM specifications ST235DTG)		
	Denominazione / Item Name ELETM MG-2 13.5/6 15 I40 NC			
	Scala / Scale 1:4	Codice / Item ID 29L0473624L	Rev 02	Status
			Tav. N. di N. 4/4	

© RISERVIAMO A TERMINI DI LEGGE LA PROPRIETA' DI QUESTO DISEGNO CON DIVIETO DI RENDERLO COMUQUE NOTO A TERZI SENZA LA NOSTRA PREVENTIVA APPROVAZIONE. DRAWING IS SCM-PROPERTY. COPYRIGHTED MATERIAL. DISCLOSURE TO THIRD PARTIES WITHOUT OUR AUTHORISATION IS EXPLICITLY FORBIDDEN.