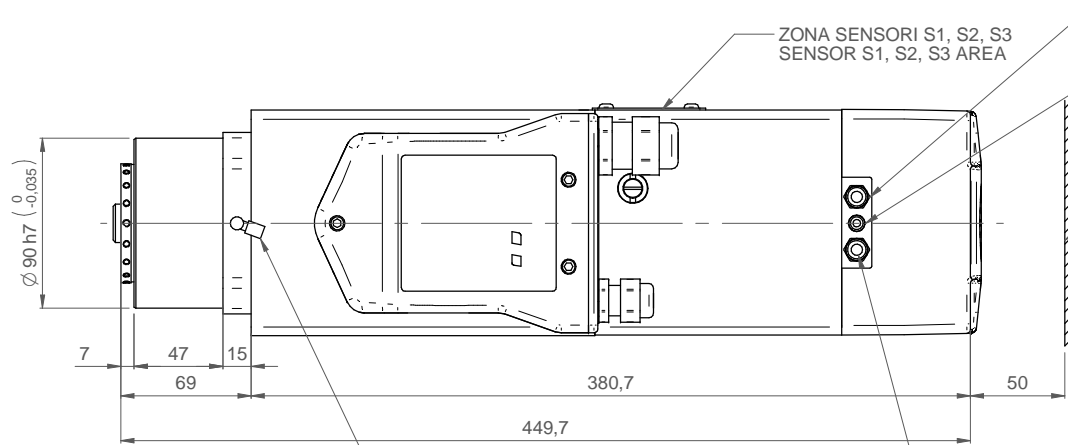
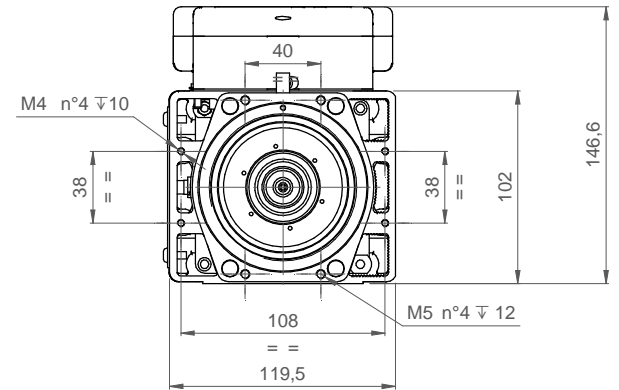
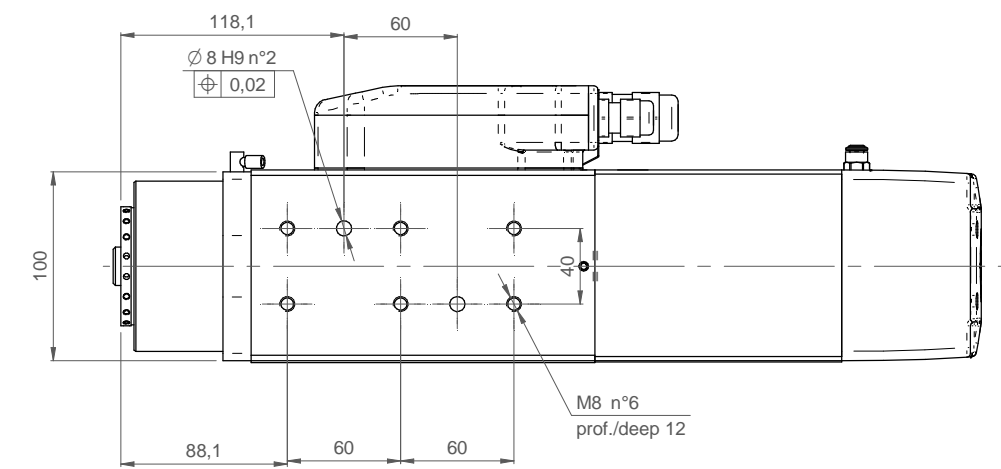
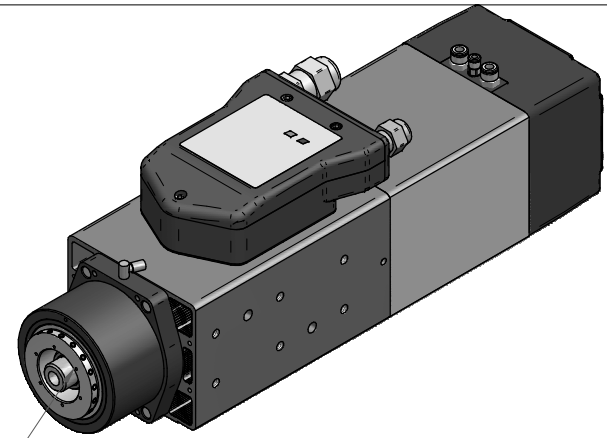


**ATTACCO HSK 63F DIN 69893-6  
TOOL INTERFACE HSK 63F DIN 69893-6**

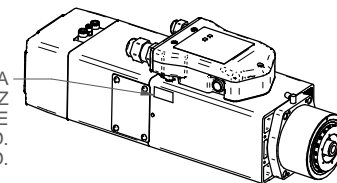


SBLOCCO UTENSILE: E6 ARIA SECCA 6-6,5 bar  
RELEASE TOOL: E6 AIR DRY 6-6,5 bar

BLOCCO UTENSILE: E4 ARIA SECCA 6-6,5 bar  
LOCK TOOL: E4 AIR DRY 6-6,5 bar

DISTANZA DA PARETE  
GAP FROM EDGE

PUNZONARE SU CARCASSA  
HD XXXX YY/ZZ  
XX=SERIALE  
YY=MESE DI PROD.  
ZZ=ANNO DI PROD.



PRESSURIZZAZIONE E4 0,5-1,0 bar  
PRESSURIZATION E4 0,5-1,0 bar

SOFFIO CONO: E6 ARIA SECCA 6-6,5 bar  
TAPPER CLEANING E6 AIR DRY 6-6,5 bar

Controlato / Checker	Firma / Signature	Data / Date			
Disegnato / Designer			Rev	Data / Date	Firma / Signature
			N° Modifica / Change ID		
			Descrizione ultima modifica / Last change description		
			Denominazione / Item Name		
			<b>ELETM QD-1F 4/12 24 63F NC CB</b>		
			Scala / Scale		
			<b>1:1</b>		
			Codice / Item ID		
			<b>29L0152080E</b>		
			Rev		
			<b>05</b>		
			Status		
			<b>3/3</b>		
			Tav. N. di N.		



© RISERVATA TUTTA LA PROPRIETÀ DI QUESTO DISEGNO CONVIENE CONSERVARE E COMUNICARE A TERZO SENZA ALCUNA PRESENTAZIONE APPROVAZIONE. THIS DRAWING IS OUR PROPERTY. COPYPRIED MATERIAL. DISCLOSED TO THIRD PARTIES WITHOUT OUR AUTHORIZATION IS EXPRESSLY FORBIDDEN.