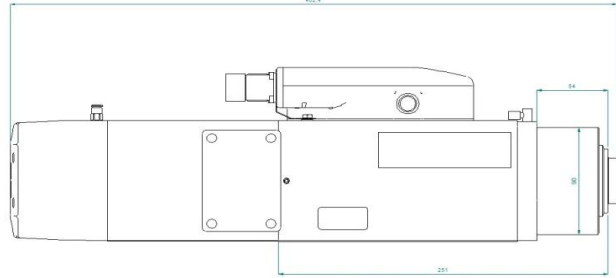
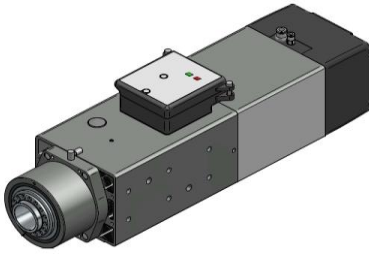
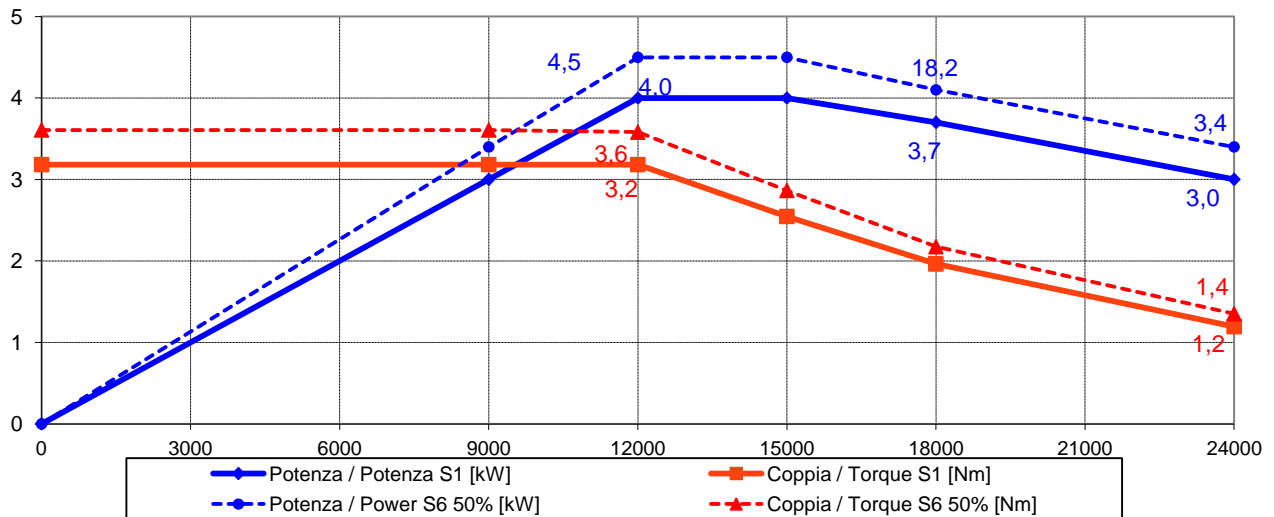


**Electrospindle ATC 4 kW 24.000 rpm  
QD-1F 4/12 24 ISO30 NC PP**

QD.200.A02.00



**Prestazioni - Performances**



**Specifiche tecniche/ Technical Specifications**

**Tipologia elettromandrino / Electrospindle type**

**Attacco utensile / Tool interface**

**Velocità rotazione max / Max speed**

**Raffreddamento / cooling**

**Cuscinetti / Ball bearings**

**Lubrificazione cuscinetti / Bearings lubrication**

**Connessione pneumatiche / Pneumatic connection**

**Potenza max. (S1 - S6) / Max. Power.(S1 - S6)**

**Coppia max. (S1 - S6) / Max. Torque (S1 - S6)**

**Corrente (S1 - S6) / Current (S1 - S6) 380V**

**Tensione / Voltage**

**Rotazione / Rotation**

**Azionamento / Supply**

**Sensoristica / Sensors**

**Peso / Weight**

Asincrono-4 poli / Asynchronous-4 poles

ISO 30

24000 rpm

Aria con elettroventola 24V DC /Air by electrofan 24V DC

Ceramici / Ceramic

Grasso a vita / Grease long life

Sblocco uten. / Release. tool: Ø6 6-6.5 bar

Pressurizzazione / Air seal.: Ø4, 0.5-1 bar

Blocco uten. / Lock tool: Ø4 6-6.5 bar

4 kW @12000 Rpm (S1) / 4.5 kW @ 12000 Rpm (S6)

3,2 Nm (S1) / 3,6 Nm (S6)

8,6 A (S1) / 10,6 A (S6)

380 V

CW – CCW

Con inverter / By inverter

S1 Afferraggio utensile / S1 Tool lock

S2 Pinza aperta / S2 Open clamp

S3 Rotazione albero / S3 Spindle rotation

16 kg