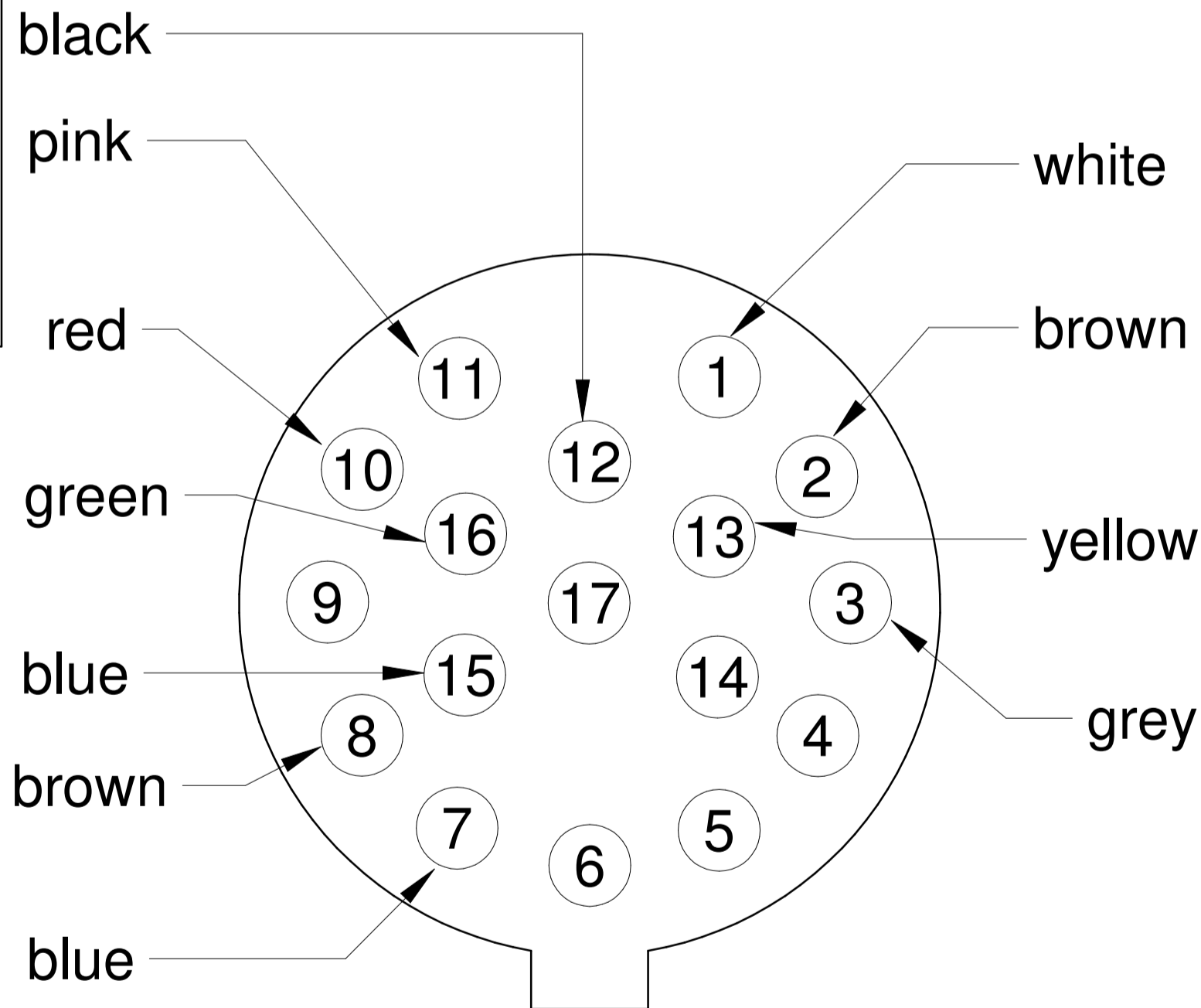
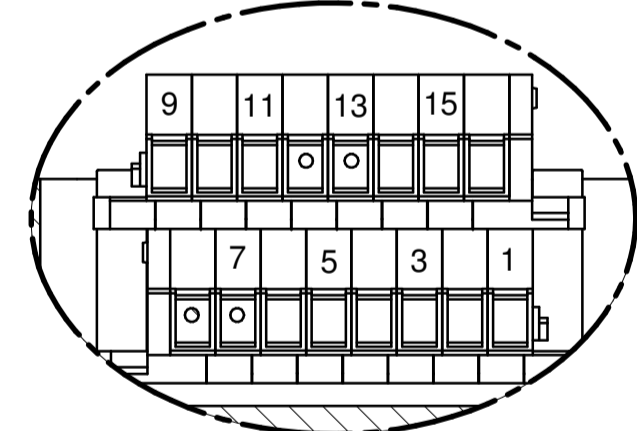


**NOTA:**  
DURANTE LA CABLATURA DELL'ELETTROMANDRINO  
SERRARE LO SCHERMO DEL CAVO DI POTENZA  
E DI SEGNALE MEDIANTE I PRESSACAVI EMC

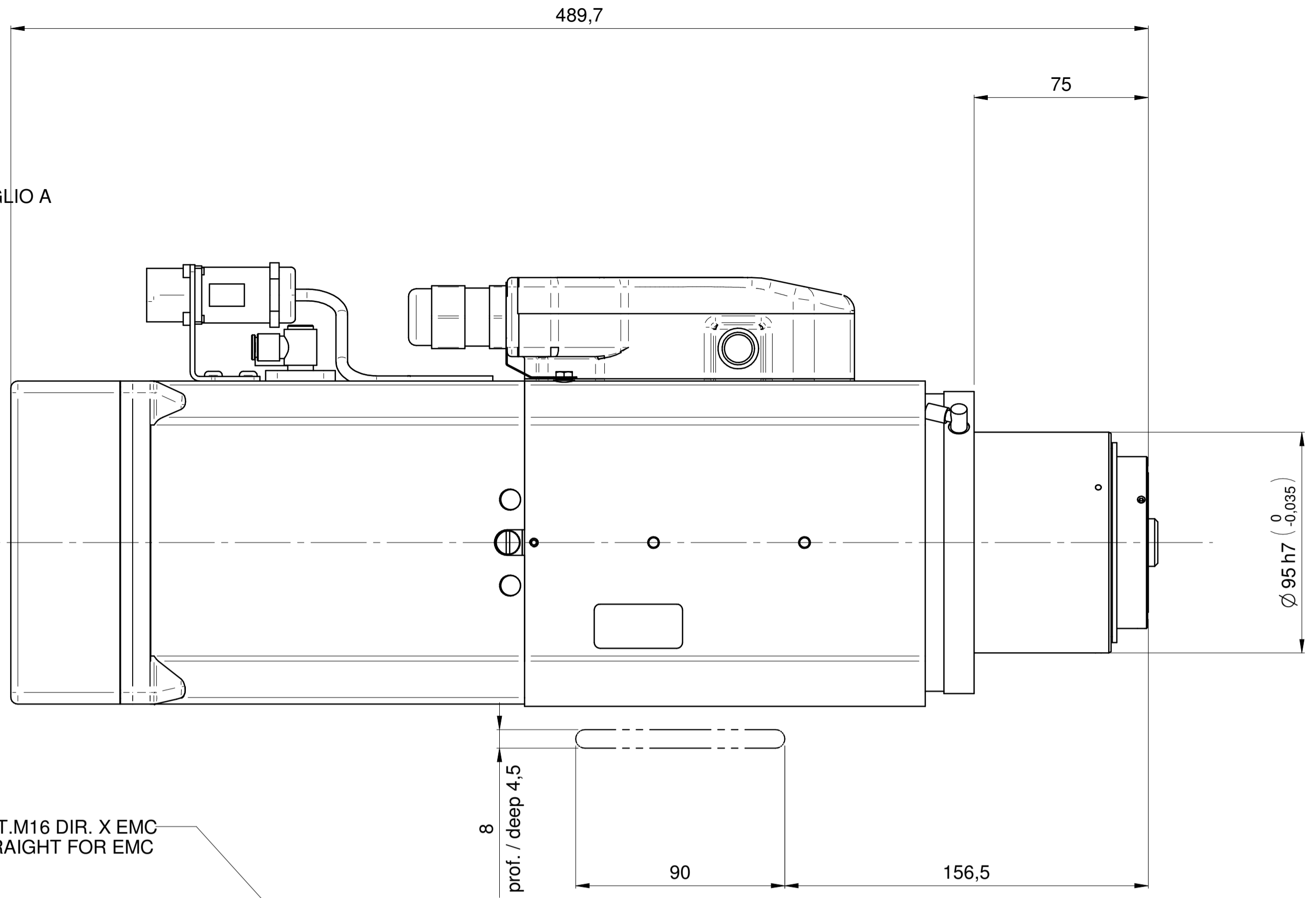
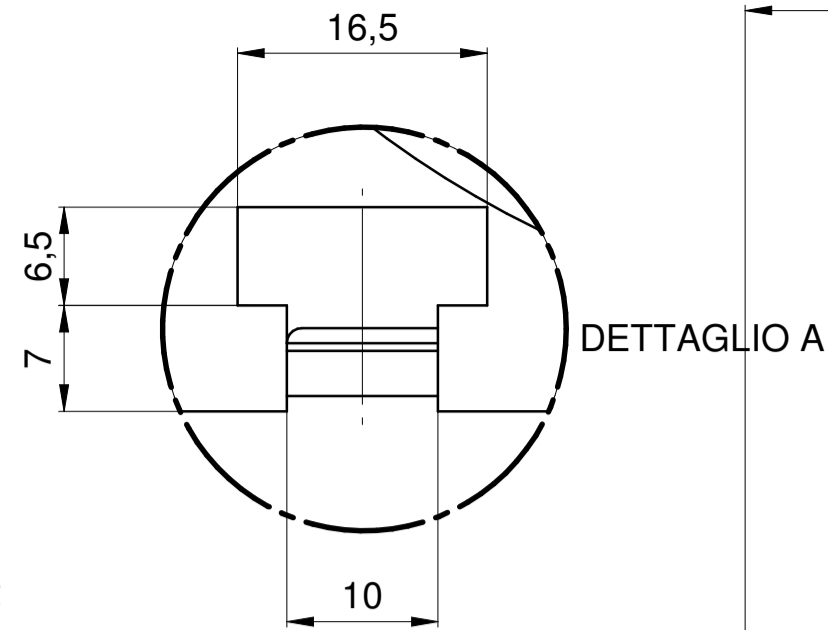
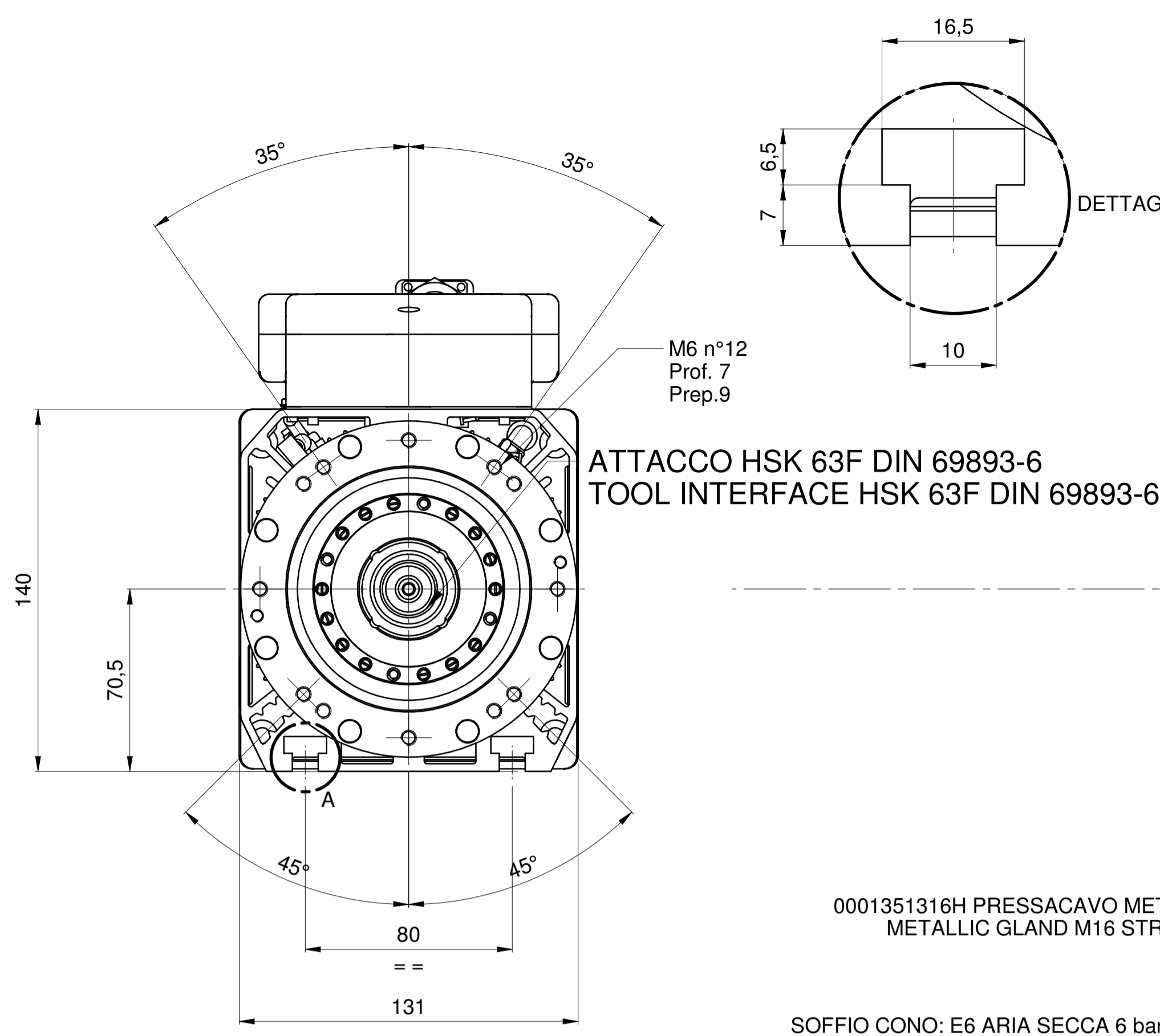
**NOTE:**  
DURING THE CABLING OF SPINDLE  
TIGHTEN THE SHIELD OF POWER AND SIGNAL CABLE  
THROUGH METALLIC GLAND EMC



POTENZA - POWER	
DESCRIZIONE - DESCRIPTION	COLORE - COLOR
U - PHASE MOTOR	NERO-BLACK
V - PHASE MOTOR	BLU-BLUE
W - PHASE MOTOR	MARRONE - BROWN
GND	GIALLO/VERDE-YELLOW/GREEN

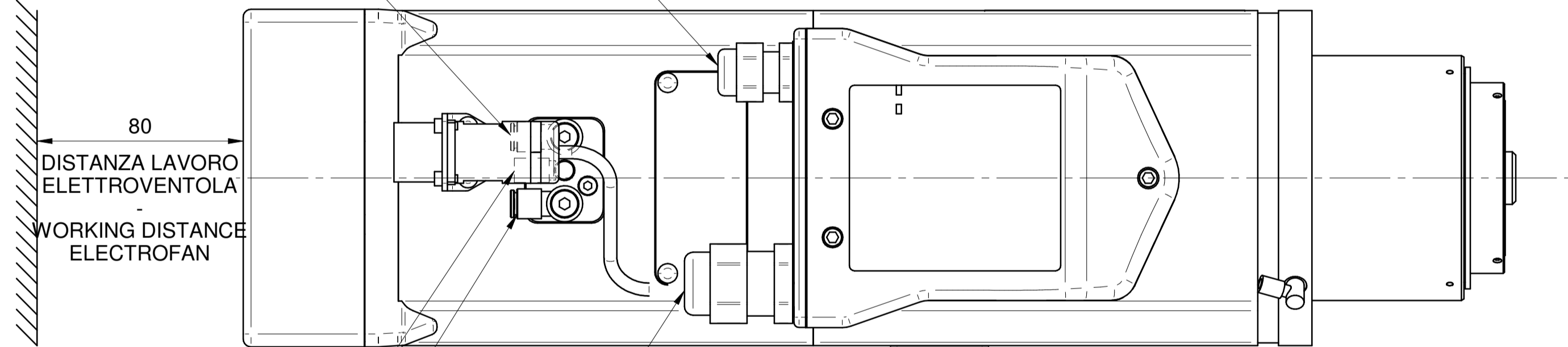
SEGNALE - SIGNAL		
ID	DESCRIZIONE - DESCRIPTION	COLORE - COLOR
1	0 V - ALIM. S1 - SUPPLY S1	BLU-BLUE
2	OUTPUT S1 - POS. TIRANTE - DRAW BAR POSITION	NERO-BLACK
3	+24 Vcc ALIM. S1 - SUPPLY S1	MARRONE - BROWN
4	0 V - ALIM. S1 - SUPPLY S2	BLU-BLUE
5	OUTPUT S2 - PINZA APERTA - CHUCK OPEN	NERO-BLACK
6	+24 Vcc ALIM. S1 - SUPPLY S2	MARRONE - BROWN
7	SONDA TERMICA - THERMOSWITCH	BIANCO - WHITE
8	SONDA TERMICA - THERMOSWITCH	BIANCO - WHITE
9	0 V - ALIM. S1 - SUPPLY S3	BLU-BLUE
10	OUTPUT S3 - ALBERO FERMO - SHAFT STANDSTILL	NERO-BLACK
11	+24 Vcc ALIM. S1 - SUPPLY S3	MARRONE - BROWN
12	PULSANTE C.U. - T.C. BUTTON	NERO-BLACK
13	PULSANTE C.U. - T.C. BUTTON	NERO-BLACK
14	0 Vcc ALIM. ELETTROV. - SUPPLY ELECTROFAN	BIANCO - WHITE
15	+24 Vcc ALIM. ELETTROV. - SUPPLY ELECTROFAN	MARRONE - BROWN
16	OUTPUT ELETTROVENTOLA - OUTPUT ELECTROFAN	VERDE - GREEN

CONNETTORE M23 ENCODER		
PIN	COLORE - COLOUR	FUNZIONE - FUNCTION
1	WHITE	Ua + ENCODER
2	BROWN	Ua - ENCODER
3	GREY	Un + ENCODER
4	N.C.	N.C.
5	N.C.	N.C.
6	N.C.	N.C.
7	BLUE	+0 Vcc ALIM. ENCODER
8	N.C.	N.C.
9	N.C.	N.C.
10	RED	+5 Vcc ALIM. ENCODER
11	PINK	Ub + ENCODER
12	BLACK	Ub - ENCODER
13	YELLOW	Un - ENCODER
14	N.C.	N.C.
15	BLUE	CONNECTED TO 7
16	GREEN	5V SENSE ENCODER
17	N.C.	N.C.



0001351316H PRESSACAVO MET.M16 DIR. X EMC  
METALLIC GLAND M16 STRAIGHT FOR EMC

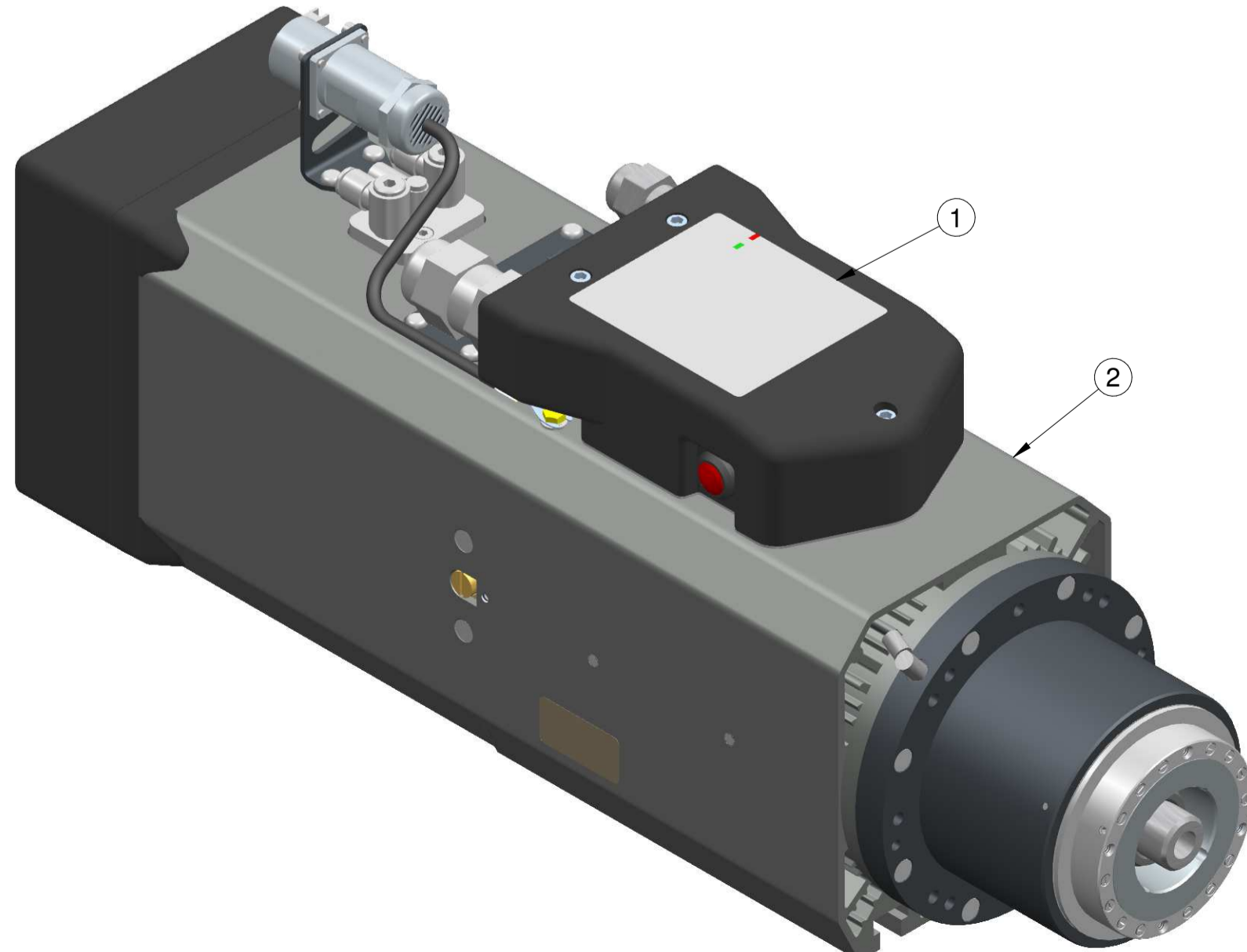
SOFFIO CONO: E6 ARIA SECCA 6 bar  
TAPPER CLEANING EG AIR DRY 6 bar



BLOCCO UTENSILE: E4 ARIA SECCA 6 bar  
LOOK TOOL : E4 AIR DRY 6 bar

SBLOCCO UTENSILE: E6 ARIA SECCA 6 bar  
RELEASE TOOL: EG AIR DRY 6 bar

0001351317A PRESSACAVO MET.M25 DIR. X EMC  
METALLIC GLAND M25 STRAIGHT FOR EMC



Pos.	Codice	Descrizione	Q.tà
1	03L0486434F	TARGA ADES. ELETM. 29L0486431E HITECO L82 LA72 CE	1
2	29L0486430C	ELETM QE-1F 8/12 24 63F NC CB ES S.TARG.	1

Massa: 23 Kg

Rev	Data / Date	Firma / Signature	Descrizione ultima modifica / Last change description	N° Modifica / Change ID
0				
1	25/01/2019	CF2	Poso grezzo/Raw weight (kg)	VER000
1	25/01/2019	L.Perrotti	Massa / Mass (kg) 225050,75	Vedi Tabella

Denominazione / Item Name: ELETM QE-1F 6.6/12 24 63F NC CB ES  
Codice / Item ID: 29L0486431E  
Scala / Scale: 1:2  
Rev: 00  
Status: 00  
Tav. N. di N.: 1/1