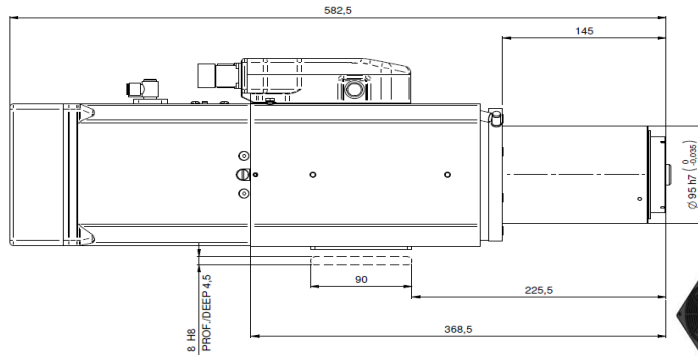
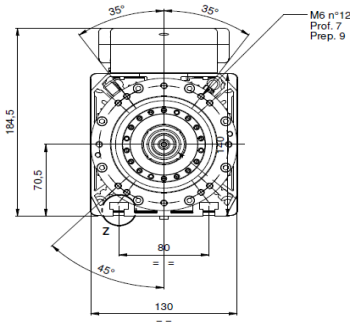


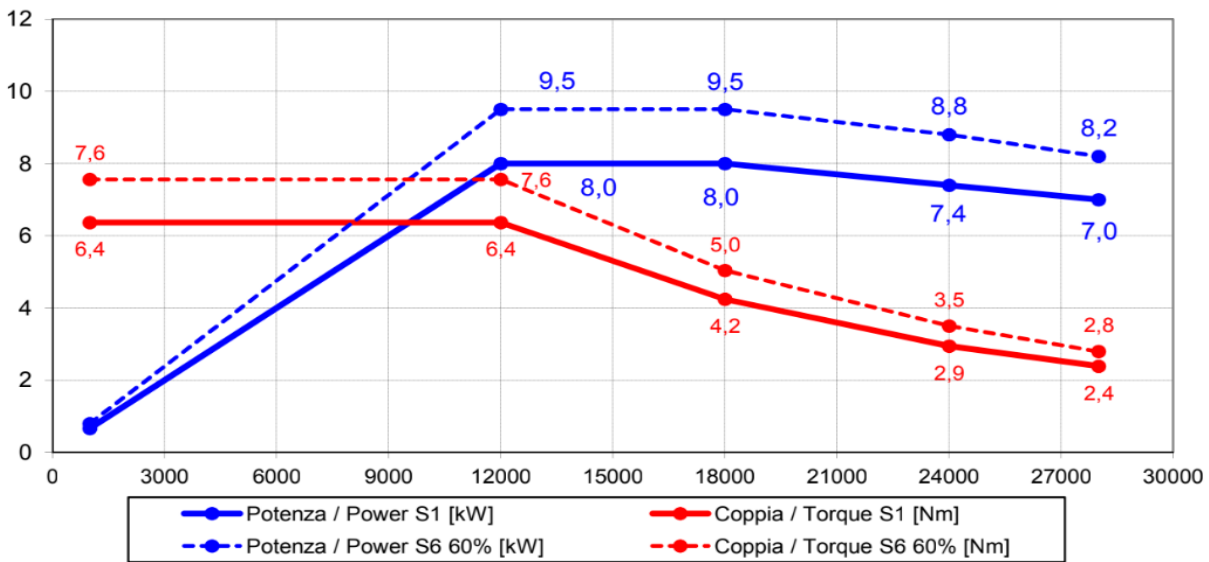


**Electrospindle ATC 8Kw 28.000 rpm  
QE-1F 8/12 28 HSK63F NL CC**

**QE.000.L02**



**Prestazioni - Performances**



**Specifiche tecniche/ Technical Specifications**

Tipologia elettromandrino / Electrospindle type	Asincrono-4 poli / Synchronous-4poles
Attacco utensile / Tool interface	HSK 63F
Velocità rotazione max / Max speed	28000 rpm
Raffreddamento / cooling	Aria con elettroventola 24V DC / Air by electrofan 24V DC
Cuscinetti / Ball bearings	Ceramici / Ceramic
Lubrificazione cuscinetti / Bearings lubrication	Grasso a vita / Grease long life
Connessione pneumatiche / Pneumatic connection	Sblocco uten. / Release. tool: E6 6-6,5 bar Pressurizzazione / Air seal: E6 6-6,5 bar
Potenza max. (S1 - S6) / Max. Power.(S1 - S6)	Soffio cono-aria utensile / Taper cleaning-air tool E4 6-6,5 bar
Coppia max. (S1 - S6) / Max. Torque (S1 - S6)	8 kW @12000 Rpm (S1) / 9 kW @ 12000 Rpm (S6)
Corrente (S1 - S6) / Current (S1 - S6)	6,4 Nm (S1) / 7,6 Nm (S6)
Tensione / Voltage	17 A (S1) / 19 A (S6)
Rotazione / Rotation	380 V
Azionamento / Supply	CW - CCW
Sensoristica / Sensors	Con inverter / By inverter
	S1 Afferraggio utensile / S1 Tool lock
	S2 Pinza aperta / S2 Open clamp
	S3 Rotazione albero / S3 Spindle rotation
Peso / Weight	25 kg