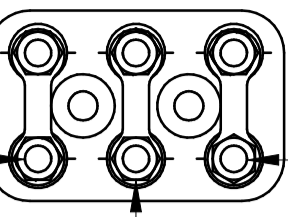
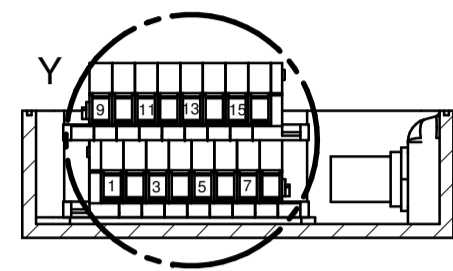


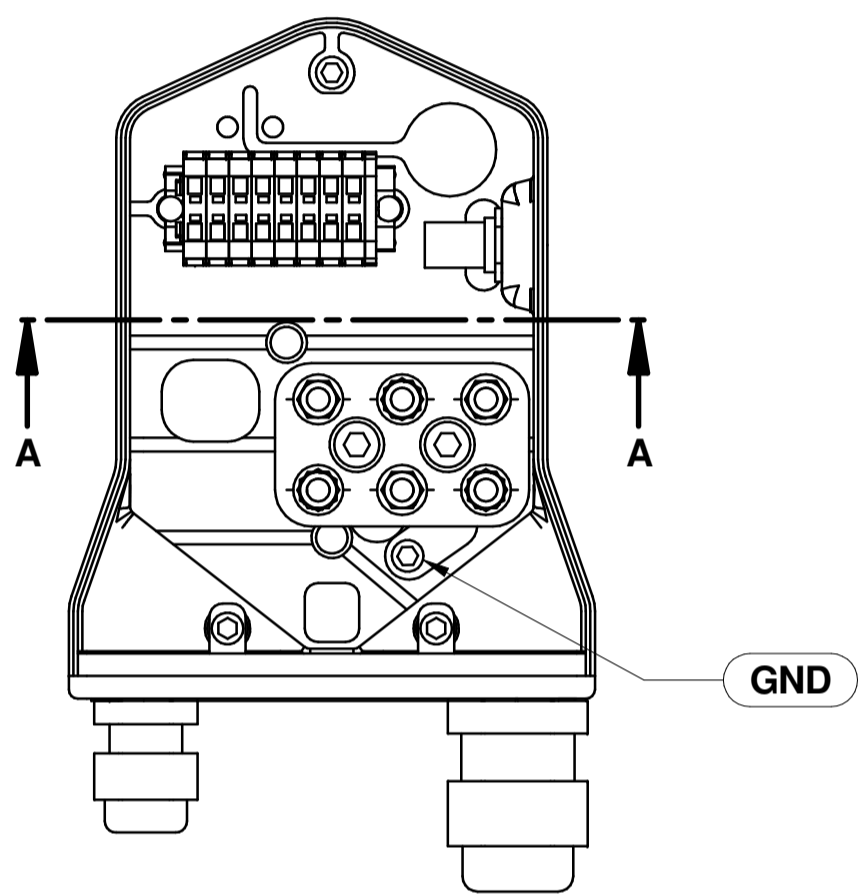
NERO BLACK (BK) **MARRONE BROWN (BR)**



BLU BLUE (BU)



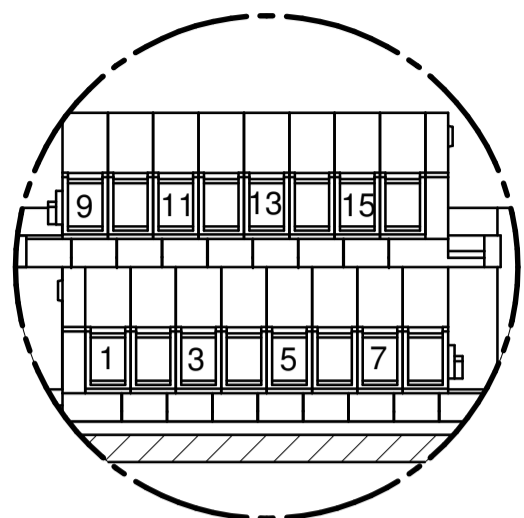
SEZIONE A-A



NOTA:
DURANTE LA CABLATURA DELL'ELETTROMANDRINO
SERRARE LO SCHERMO DEL CAVO DI POTENZA
E DI SEGNALE MEDIANTE I PRESSACAVI EMC

NOTE:
DURING THE CABLING OF SPINDLE
TIGHTEN THE SHIELD OF POWER AND SIGNAL CABLE
THROUGH METALLIC GLAND EMC

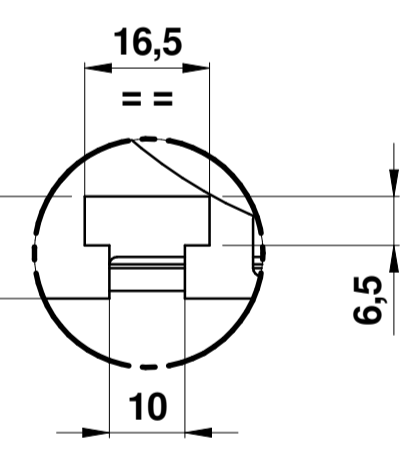
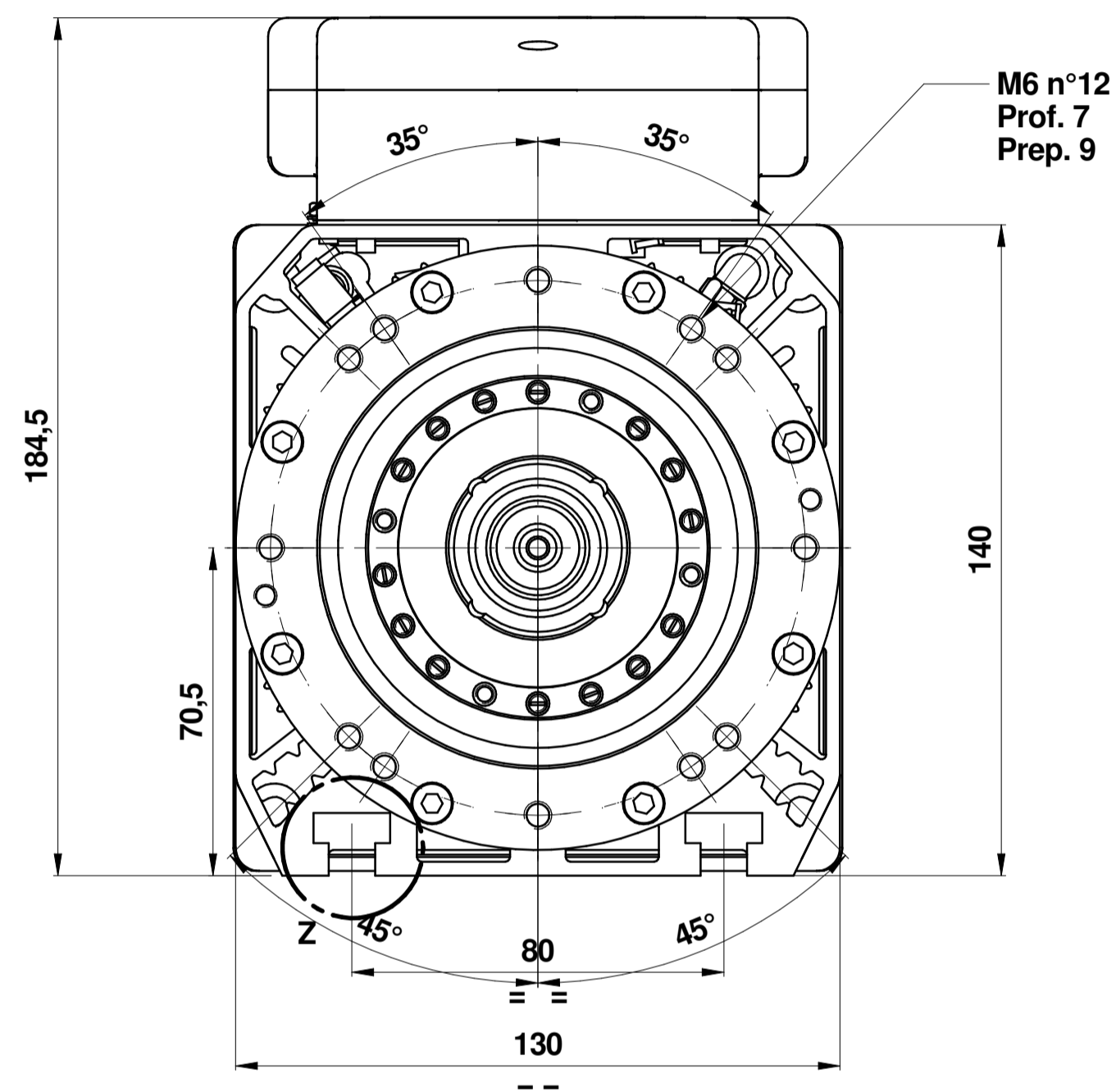
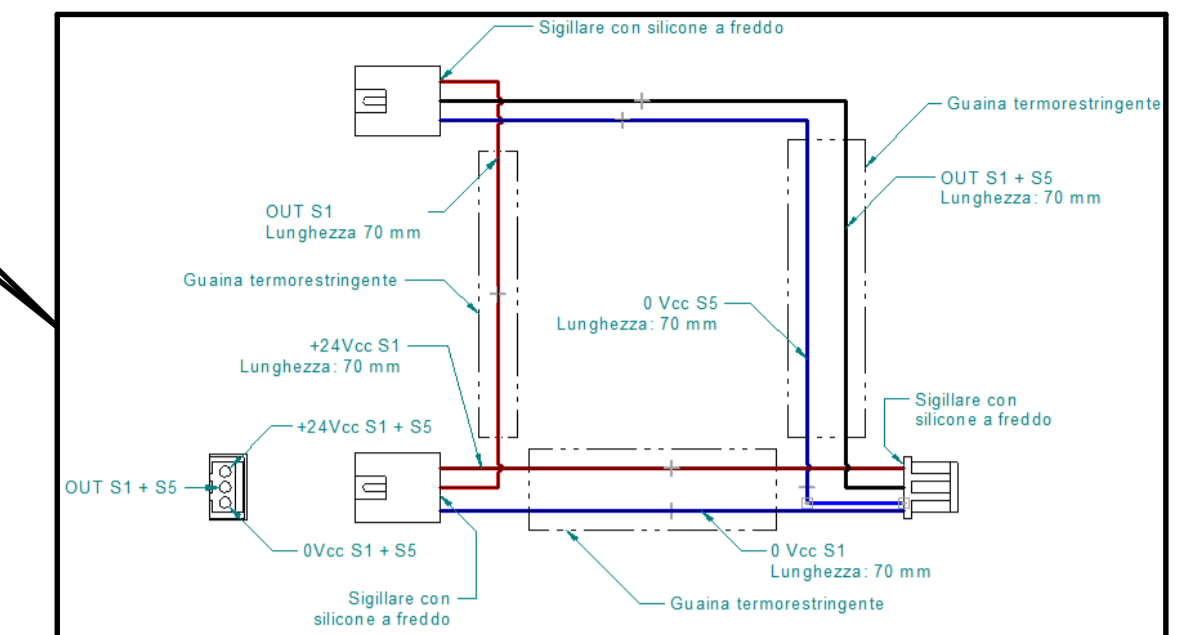
POTENZA - POWER	
DESCRIZIONE - DESCRIPTION	COLORE - COLOR
U - PHASE MOTOR	NERO-BLACK
V - PHASE MOTOR	BLU-BLUE
W - PHASE MOTOR	MARRONE - BROWN
GND	GIALLO/VERDE-YELLOW/GREEN



DETTAGLIO Y

SEGNALE - SIGNAL		
ID	DESCRIZIONE - DESCRIPTION	COLORE - COLOR
1	0 Vcc - ALIM. S1 + S5 - SUPPLY S1 + S5	BLU-BLUE S1 + BLU-BLUE S5
2	OUTPUT S1 + S5 - UTENS. AFFERRATO/TOOL LOCKED	NERO-BLACK S1 + NERO-BLACK S5
3	+24 Vcc ALIM. S1 - SUPPLY S1	MARRONE - BROWN
4	0 V - ALIM. S2 - SUPPLY S2	BLU-BLUE
5	OUTPUT S2 - UTENSILE SBLOCCATO/TOOL RELEASED	NERO-BLACK
6	+24 Vcc ALIM. S2 - SUPPLY S2	MARRONE - BROWN
7	SONDA TERMICA - THERMOSWITCH	BIANCO - WHITE
8	SONDA TERMICA - THERMOSWITCH	BIANCO - WHITE
9	0 V - ALIM. S3 - SUPPLY S3	BLU-BLUE
10	OUTPUT S3 - ALBERO FERMO /SHAFT STANDSTILL	NERO-BLACK
11	+24 Vcc ALIM. S3 - SUPPLY S3	MARRONE - BROWN
12	PULSANTE C.U. - T.C. BUTTON	NERO-BLACK
13	PULSANTE C.U. - T.C. BUTTON	NERO-BLACK
14	N.C.	-
15	N.C.	-
16	N.C.	-

N.C.= NON COLLEGATO/NOT CONNECTED



DETTAGLIO Z

PRESSACAVO MET.M16 DIR. X EMC
METALLIC GLAND M16 STRAIGHT FOR EMC

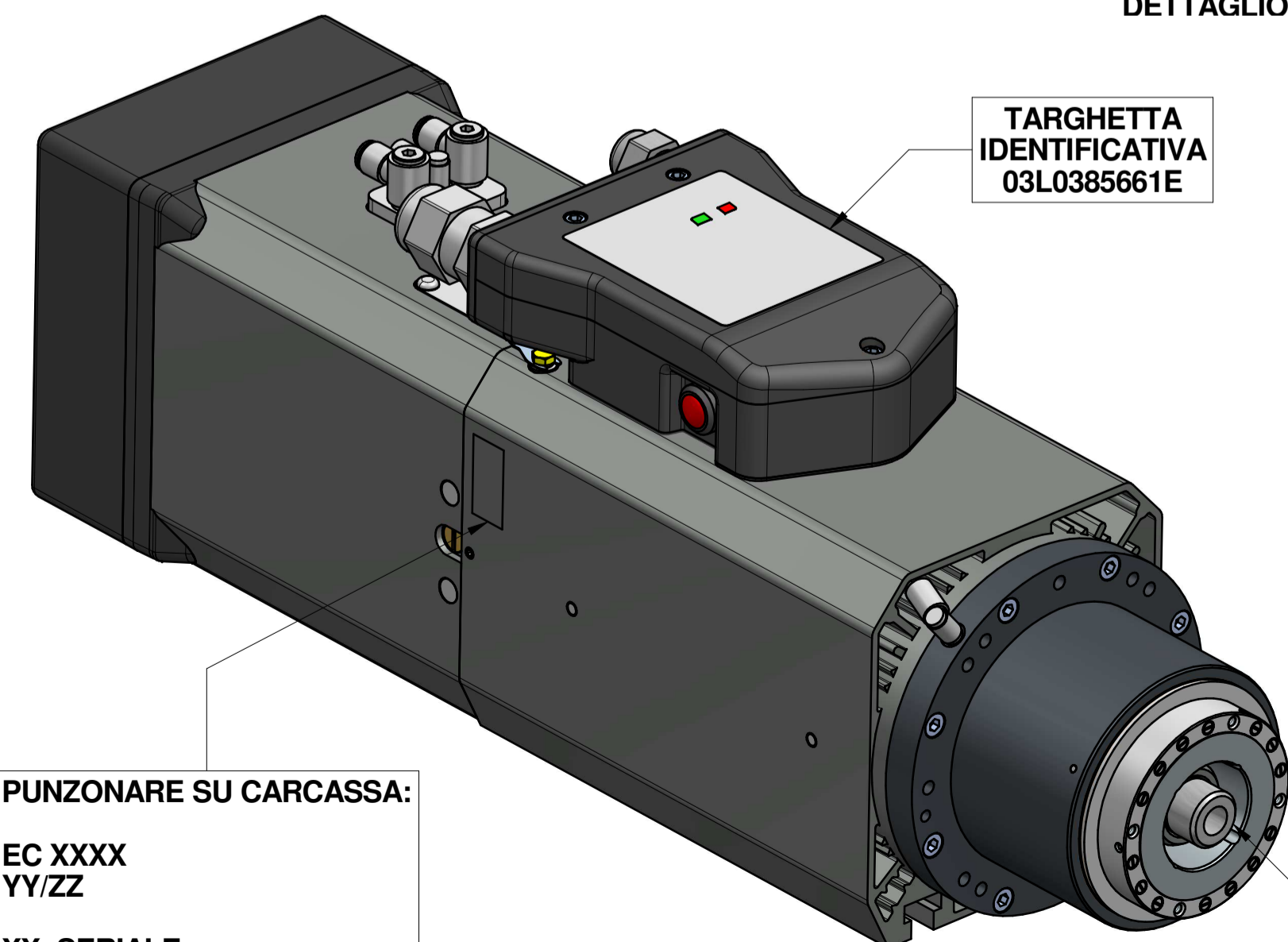
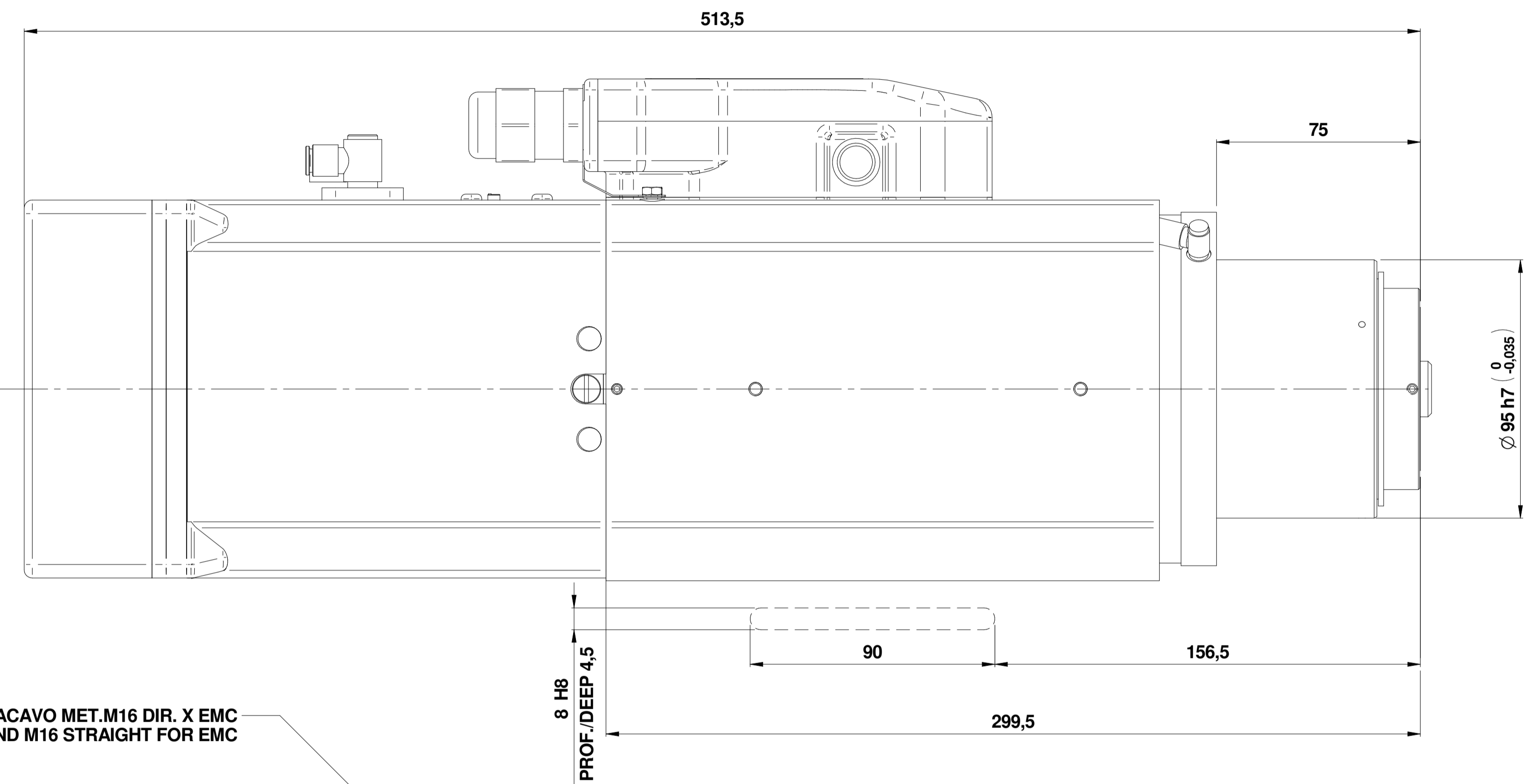
SOFFIO CONO: E6 ARIA SECCA 6 ÷ 6.5 bar
TAPER CLEANING: E6 AIR DRY 6 ÷ 6.5 bar

BLOCCO UTENSILE: E4 ARIA SECCA 6 ÷ 6.5 bar
LOCK TOOL: E4 AIR DRY 6 ÷ 6.5 bar

SBLOCCO UTENSILE: E6 ARIA SECCA 6 ÷ 6.5 bar
RELEASE TOOL: E6 AIR DRY 6 ÷ 6.5 bar

PRESSACAVO MET.M25 DIR. X EMC
METALLIC GLAND M25 STRAIGHT FOR EMC

ATTACCO HSK 63F
TOOL INTERFACE HSK 63F
DIN 69893-6



TARGHETTA
IDENTIFICATIVA
03L0385661E

PUNZONARE SU CARCASSA:

EC XXXX
YY/ZZ

XX=SERIALE
YY=MESE DI PRODUZIONE
ZZ=ANNO SI PRODUZIONE

MASSA MASS: 23 kg

Rev / Data / Date	Firma / Signature	Descrizione ultima modifica / Last change description	N° Modifica / Change ID	
02 10/07/2019	L.Perrotti	Da 29L0151231E a 29L0142212D - Inser.29L0385664G - Mod. Schemi	CN25528	
01 08/08/2018	G.Franchino	Ininfluente (Agg. Modello e Tavola)		
<small>Caratteristiche tecniche non esentate secondo direttiva europea SCM GROUP - 10 25 1010 <small>Specificazioni dei clienti inserite in SCM SPEC di versioni precedenti <small>Stipule senza specificazioni SCM: tolleranze di SCM specific ST231DTG <small>Trattamento superficiale SCM: livello medio CM specific ST231DTG <small>Quote senza indicazione di tolleranza, grado di precisione <small>Share without indication of tolerance, accuracy <small>Surface treatment SCM: SCM specific ST234DTG <small>Share without indication of tolerance, accuracy <small>Surface treatment SCM: SCM specific ST234DTG <small>Trattamento termico / Heat Treatment (SCM specific ST234DTG) <small>Ultimo rilascio / Latest release <small>Controllo / Checker <small>Disegnato / Designed</small></small></small></small></small></small></small></small></small></small></small></small></small>			CF1 <small>7</small> <small>0</small> <small>(kg)</small> <small>Massa / Mass</small> <small>(kg)</small>	<small>Posso grezzo/Raw weight</small> <small>Ricavare da o Stato di fornitura / Based on or State of supply</small>
G.Franchino	08/08/2018	SCM Specifica ST2310DTG	VER000	
<small>Denominazione / Item Name</small> ELETM QE-1F 12/12 24 63F NC CB			<small>Materiale / Material (SCM specific ST235DTG)</small> Vedi Tabella	
<small>Scala / Scale</small> 1:1,7			<small>Codice / Item ID</small> 29L0385641H	
<small>Rev</small> 02			<small>Status</small> 3/3	
<small>Tav. N. di N.</small> 02			<small>Rev</small> 02	

HITECO
HIGH TECHNOLOGY COMPONENTS

© RIPRODURRE E TRASMETTERE LA PROPRIETÀ DI QUESTO DISEGNO CON FINI DI RENDERE LO CONSTATTO È VIETATO SENZA LA NOSTRA PRESENTI APPROVAZIONE. THIS DRAWING IS SCM PROPERTY. COPYRIGHTED MATERIAL. DISCLOSURE TO THIRD PARTIES WITHOUT OUR AUTHORIZATION IS EXPRESSLY FORBIDDEN.