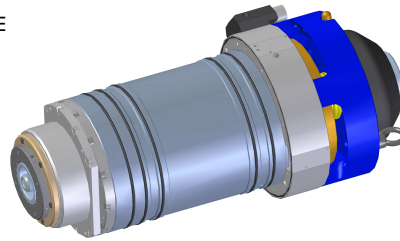


Elettromandrino/electrospindle

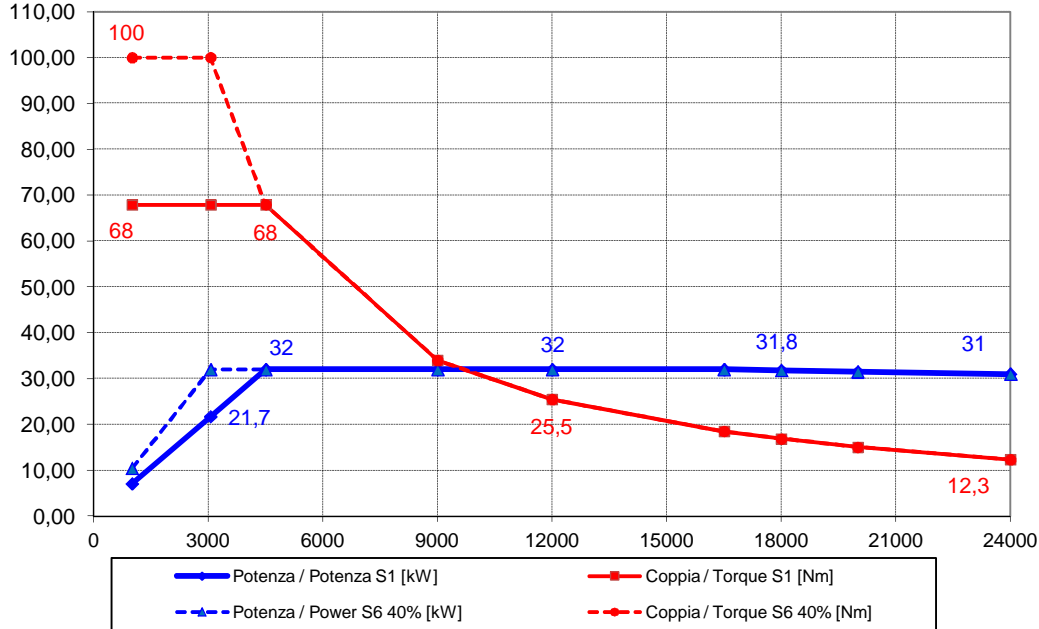
KX-2 32/4.5 24 63A ES

Codice/Code:

(KX5)



Prestazioni - Performancies



Specifiche tecniche / Technical specifications	
Potenza max. (serv. S1) / Max. Power.(S1 duty)	32 kW @ 4500 Rpm
Coppia max. (serv. S1) / Max. Torque (S1 duty)	68 Nm
Corrente (serv. S1) / Current (S1 duty)	73 A
Potenza max. (serv. S6 40%) / Max. Power.(S6 40% duty)	32 kW @ 3100 Rpm
Coppia max. (serv. S6 40%) / Max. Torque (S6 40% duty)	100 Nm
Corrente (serv. S6 40%) / Current (S6 40% duty)	113 A
Tensione / Voltage	400 V
Numero poli / Poles	4
Velocità rotazione max / Max Speed	24 000 Rpm
Rotazione / Rotation	CW - CCW
Azionamento / Supply	con inverter / by inverter
Attacco utensile / Tool interface	HSK 63A
Cuscinetti / Ball bearings	Ceramici obliqui ad alta velocità alta precisione / Ceramic high speed high precision angular contact ball bearings Ant./Front: coppia / pair Post./Rear: coppia / pair
Raffreddamento / cooling	Liquido / liquid
Sensoristica / Sensors	S1 Afferraggio utensile / Tool lock S2 Pinza aperta / Open clamp
Encoder	SYN/COS 1Vpp 256 impul./giro+imp. rifer. SYN/COS 1Vpp 256 pulse/rev.+ref. mark
Conessioni pneumatiche / Air inlets	Sblocco ut./Release. tool: E8 14,5-15,5 bar Pressurizz./Pressurization.: E6 0,5-1,0 bar Soffio cono/Taper clean.: E6 6-6,5 bar
Optional	Air tool Oil Mist Lubrication MQL Lubrication CTS Lubrication
Peso / Weight	100 Kg