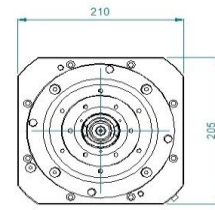
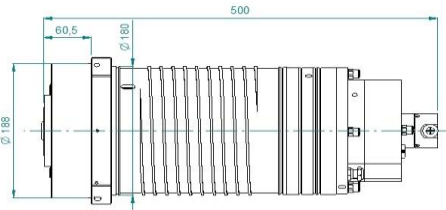
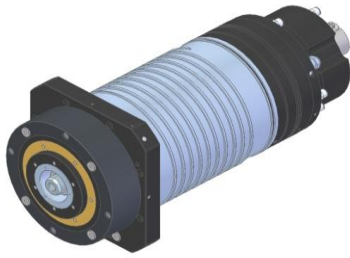
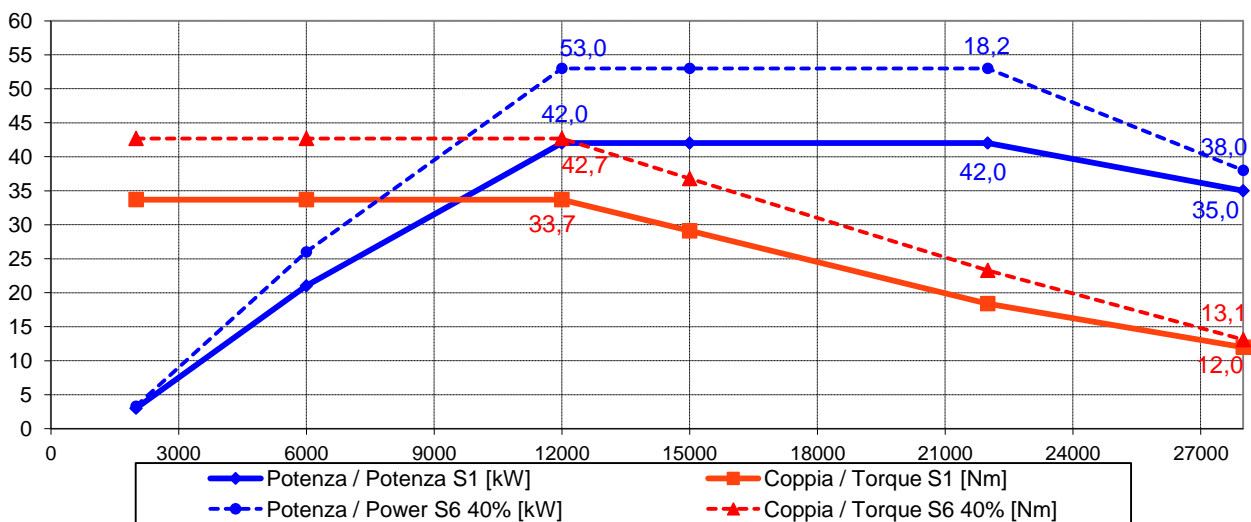




Electrospindle ATC 42kW 28.000 rpm MX 42/12 28 63A ES



Prestazioni - Performances



Specifiche tecniche/ Technical Specifications

Tipologia elettromandrino / Electrospindle type	Asincrono-6 poli / Asynchronous-6 poles
Attacco utensile / Tool interface	HSK 63A
Velocità rotazione max / Max speed	28000 rpm
Raffreddamento / cooling	Liquido / Liquid
Cuscinetti / Ball bearings	Ceramici / Ceramic
Lubrificazione cuscinetti / Bearings lubrication	Aria-olio / Air-oil: Ø6
Connessione pneumatiche / Pneumatic connection	Sblocco uten. / Release. tool: G1/4" 40 bar Pressurizzazione / Air seal: Ø4 1,5 bar
Giunto rotante/Rotary joint	Soffio cono-aria utensile / Taper cleaning-air tool: G1/4" 4-4.5 bar Lubrorefrigerante / Coolant: G1/4" max 80 bar Drenaggio / Drain: G1/8"
Potenza max. (S1 - S6) / Max. Power.(S1 - S6)	42 kW @12000 Rpm (S1) / 53 kW @ 12000 Rpm (S6)
Coppia max. (S1 - S6) / Max. Torque (S1 - S6)	33,7 Nm (S1) / 112 Nm (S6)
Corrente (S1 - S6) / Current (S1 - S6)	120 A (S1) / 148 A (S6)
Tensione / Voltage	380 V
Rotazione / Rotation	CW – CCW
Azionamento / Supply	Con inverter / By inverter
Sensoristica / Sensors	Sensore analogico/Analog sensor
Encoder	SIN/COS 256 imp./giro+imp. rifer.SYN/COS 256 pulse/rev.+refer. Pulse
Peso / Weight	70 kg