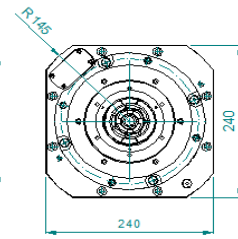
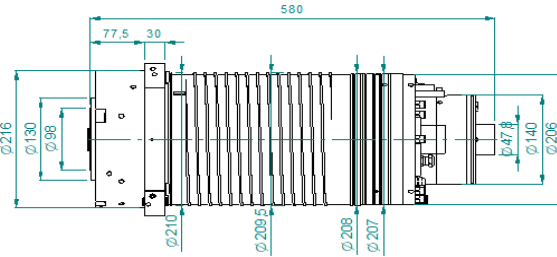
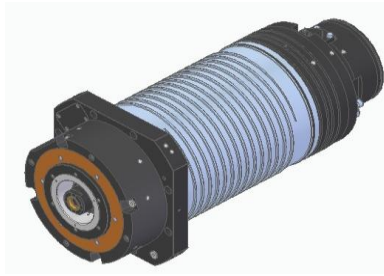
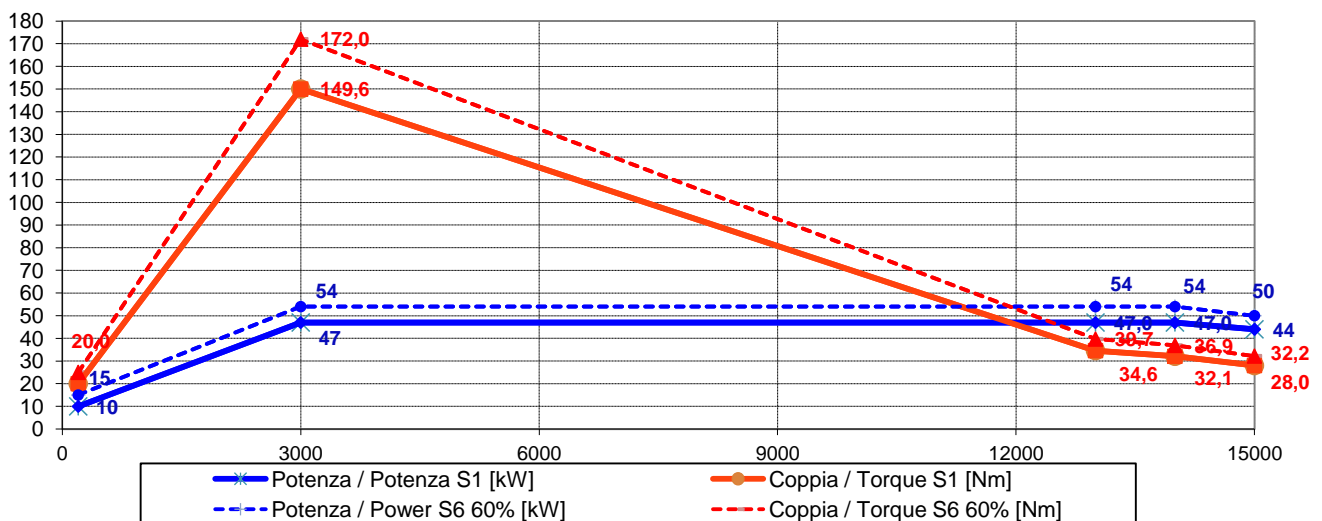




## Electrospindle ATC 47kW 15.000 rpm MX2 47/3 15 O 100A ES



### Prestazioni - Performances



### Specifiche tecniche/ Technical Specifications

Tipologia elettromandrino / Electrospindle type	Sincrono-8 poli / Synchronous-8 poles
Attacco utensile / Tool interface	HSK 100A
Velocità rotazione max / Max speed	15000 rpm
Raffreddamento / cooling	Liquido / Liquid
Cuscinetti / Ball bearings	Ceramici / Ceramic
Lubrificazione cuscinetti / Bearings lubrication	Aria-olio / Air-oil: Ø6
Connessione pneumatiche / Pneumatic connection	Sblocco uten. / Release. tool: G1/4" 70 bar Pressurizzazione / Air seal: Ø4 1,5 bar
Giunto rotante/Rotary joint	Soffio cono-aria utensile / Taper cleaning-air tool: Ø6 4-4.5 bar Lubrorefrigerante / Coolant: G1/4" max 80 bar Drenaggio / Drain: G1/8"
Potenza max. (S1 - S6) / Max. Power.(S1 - S6)	47 kW @3000 Rpm (S1) / 54 kW @ 3000 Rpm (S6)
Coppia max. (S1 - S6) / Max. Torque (S1 - S6)	150 Nm (S1) /172 Nm (S6)
Corrente (S1 - S6) / Current (S1 - S6)	139 A (S1) / 159 A (S6)
Tensione / Voltage	670 V
Rotazione / Rotation	CW - CCW
Azionamento / Supply	Con inverter / By inverter
Sensoristica / Sensors	Sensore analogico/Analog sensor
Encoder	SIN/COS 256 imp./giro+imp. rifer.SYN/COS 256 pulse/rev.+refer. Pulse
Peso / Weight	110 kg

Dati tecnici non impegnativi, Hiteco, si riserva il diritto di modificarli senza darne preavviso.

A termine di legge è rigorosamente vietato riprodurre o comunicare a terzi il contenuto del presente documento.

Technical Data are purely indicative and Hiteco, reserves the right to make changes without prior notice.

According to the law it is strictly forbidden to reproduce or transmit to third parties the content of this document.