

冲孔钻头 BORING UNITS



适用于机床制造商的高科技部件

High-tech components for machine tool manufacturers.

Hiteco专业设计和制造机床领域使用的高科技工业机电部件。
A.T.C电主轴, M.T.C电主轴, 双向旋转头, 钻头和总成。

Hiteco is specialized in design and manufacture of high technology industrial electromechanical components for machine tools. **A.T.C. electrospindles, M.T.C. electrospindles, birotary heads, boring units and aggregates.**



Hiteco向国际市场推出系列广泛的产品用于加工：**木材, 塑料, 高级材料, 玻璃, 石材和金属。**

Hiteco offers a wide range of products on international market for **wood, plastic, advanced materials, glass, stone and metal processing.**



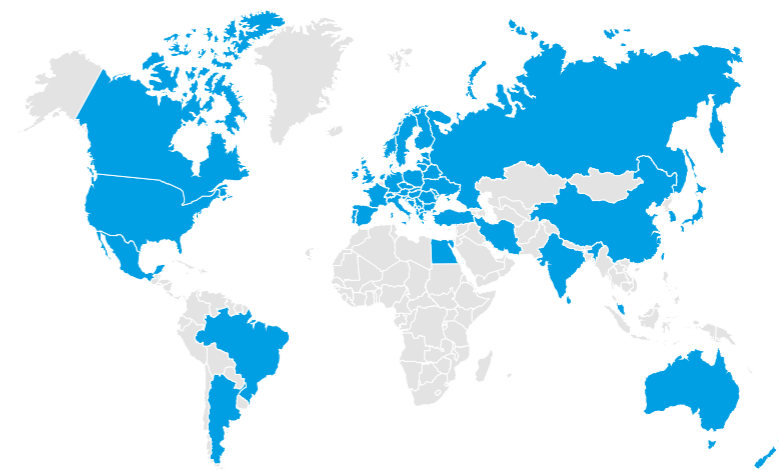
Hiteco诞生于1977年, 是各类材料加工机床制造领域全球领导者**SCM集团**旗下的一个分部, 自此开始了其指数级的成长之路。2008年, Hiteco成为了**为外部客户市场提供服务的利润中心**。如今其所生产的产品已经成为市场的标杆, 是专业领域中最重要全球巨头之一。

Hiteco founded in 1977 as an internal division of the **SCM Group**, leading company in machine tools construction for processing a wide range of materials, had an increasingly exponential growth. In 2008 it become **a profit unit for external customers**. Today Hiteco offers key products for the components market, becoming one of the most important world players in the sector.



销售网络遍布全球, 提供一流的服务

A capillary presence for a best-in-class and worldwide service.



分布广泛的网络满足了Hiteco与客户保持密切联系的需求, 在各地派驻了**专业的技术人员**, 保证了极其快速而专业的反应能力: 不仅可以降低停机次数和减少生产中出现的问题, 而且通过提出有效和创新的解决方案来创造附加值。这一优势不仅缩短了交货的时间, 也是Hiteco在国际市场上赢得最高**客户满意度**的原因之一。

The widespread distribution of the company responds to the desire of Hiteco to be close to the customer with the presence of **specialized technicians** on the territory who guarantee an extremely rapid and professional response: not only to reduce machine downtimes and production problems, but also to create added value with the proposal of effective and innovative solutions. Such care, in addition to reduced delivery times, is one of the reason that led Hiteco to have the highest **customer satisfaction** on the international market.



目录 INDEX

技术数据和插图不具约束力，为确保产品和服务的持续拓展，HITECO保留作出修改的权利，恕不另行通知。

Technical data and illustrations are not binding and, for the constant development of products and services, HITECO reserves the right to make modifications without prior notice.



WOOD

p.7 系列 TF.A

- p. 7 TF.A.5V.0H.0B.A
- p. 8 TF.A.7V.0H.0B.A
- p. 9 TF.A.9V.0H.0B.A

p.10 系列 TF.B

- p. 10 TF.B.7V.4H.2B.A
- p. 11 TF.B.8V.3H.0B.A
- p. 12 TF.B.9V.3H.1B.A
- p. 13 TF.B.12V.0H.0B.A

p.14 系列 TF.C

- p. 14 TF.C.12V.4H.2B.A
- p. 15 TF.C.12V.6H.0B.A
- p. 16 TF.C.14V.3H.1B.A
- p. 17 TF.C.16V.0H.2B.A

p.18 系列 TF.D

- p. 18 TF.D.9V.3H.1B.A

p.19 系列 TF.E

- p. 19 TF.E.11V.4H.0B.A

p.20 系列 TF.F

- p. 20 TF.F.10V.3H.1B.A

p.21 系列 TF.H

- p. 21 TF.H.9V.0H.0B.A

p.22 系列 TF.L

- p. 22 TF.L.14V.4H.0B.A

p.23 系列 TF.M

- p. 23 TF.M.14V.0H.0B.A

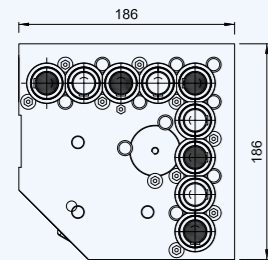
配置您的钻床
CONFIGURE YOUR BORING UNITS

钻头识别号 / BORING HEAD IDENTIFICATION KEY

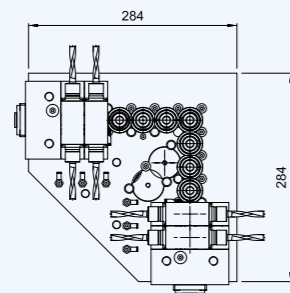
Example: TF.A.5V.OH.1B.A

TF 冲孔钻头 / BORING HEAD

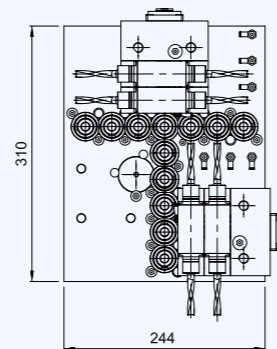
A 定义主体类型 / DEFINE CASE TYPE



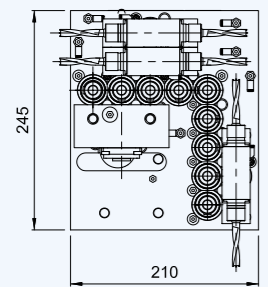
主体 / CASE A = 186 x 186



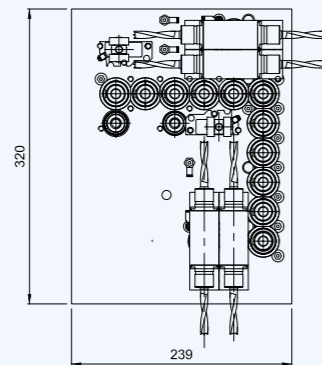
主体 / CASE B = 284 x 284



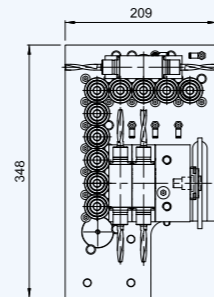
主体 / CASE C = 244 x 310



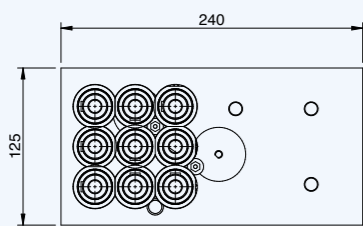
主体 / CASE D = 210 x 245



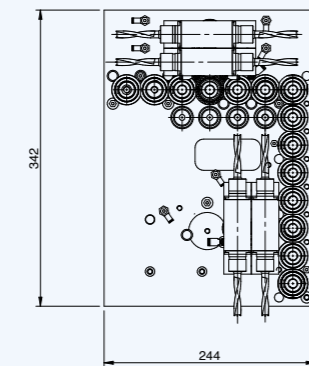
主体 / CASE E = 239 x 320



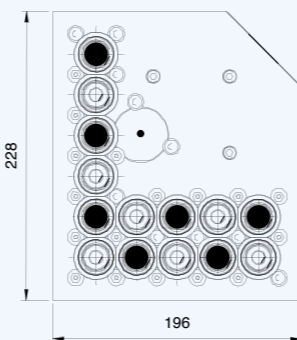
主体 / CASE F = 209 x 348



主体 / CASE H = 240 x 125



主体 / CASE L = 244 x 342



主体 / CASE M = 196 x 228

5V 定义垂直主轴数 / DEFINE Nr. VERTICAL SPINDLES

OH 定义水平主轴数 / DEFINE Nr. HORIZONTAL SPINDLES

1B 定义刀片组数 / DEFINE Nr. OF BLADE KIT

A 配置 / CONFIGURATION

TF.A.5V.OH.OB.A

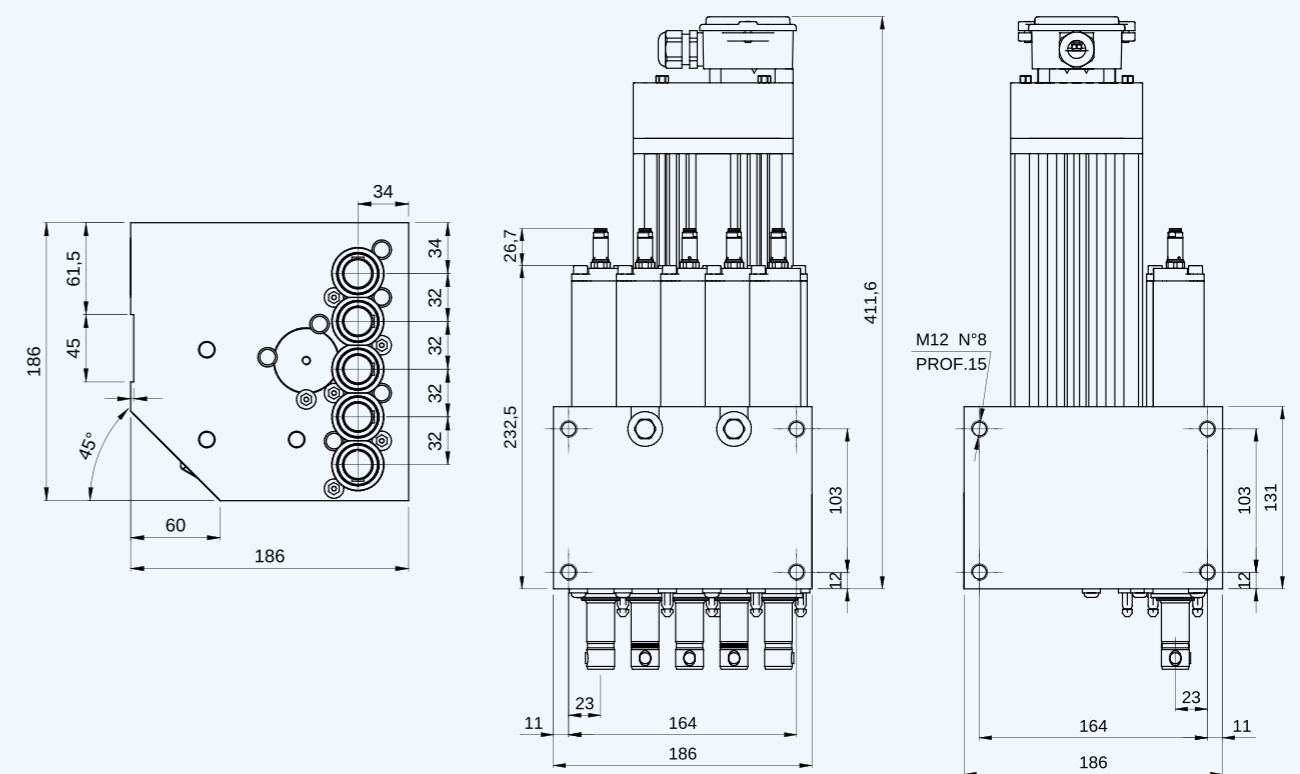
技术规格 / TECHNICAL SPECIFICATIONS

钻头接口 / Tool connection	10 H7 mm
钻头轴距 / Distance between centers	32 mm
钻头最大长度 / Max boring bits lenght	70 mm
垂直主轴行程 / Vertical spindles stroke	60 mm
电机功率 / Motor power	1,5 kW
垂直最大转速 / Max vertical spindles stroke	8.000 RPM
重量 / Weight	25 kg

AVAILABLE WITH



LAYOUT



TF.A.7V.0H.0B.A

技术规格 TECHNICAL SPECIFICATIONS

钻头接口 Tool connection	10 H7 mm
钻头轴距 Distance between centers	32 mm
钻头最大长度 Max boring bits lenght	70 mm
垂直主轴行程 Vertical spindles stroke	60 mm 
电机功率 Motor power	1,5 kW
垂直最大转速 Max vertical spindles speed	8.000 RPM
重量 Weight	24 kg



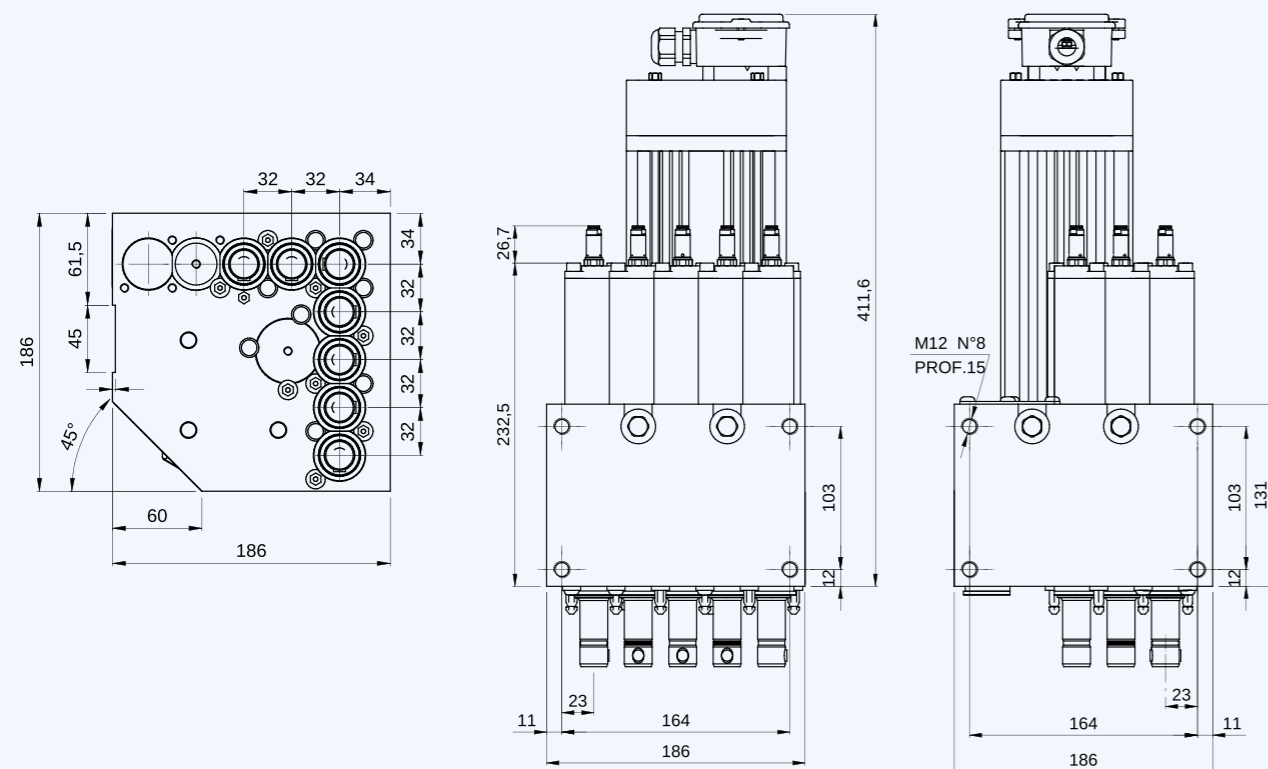
TF.A.9V.0H.0B.A

技术规格 TECHNICAL SPECIFICATIONS

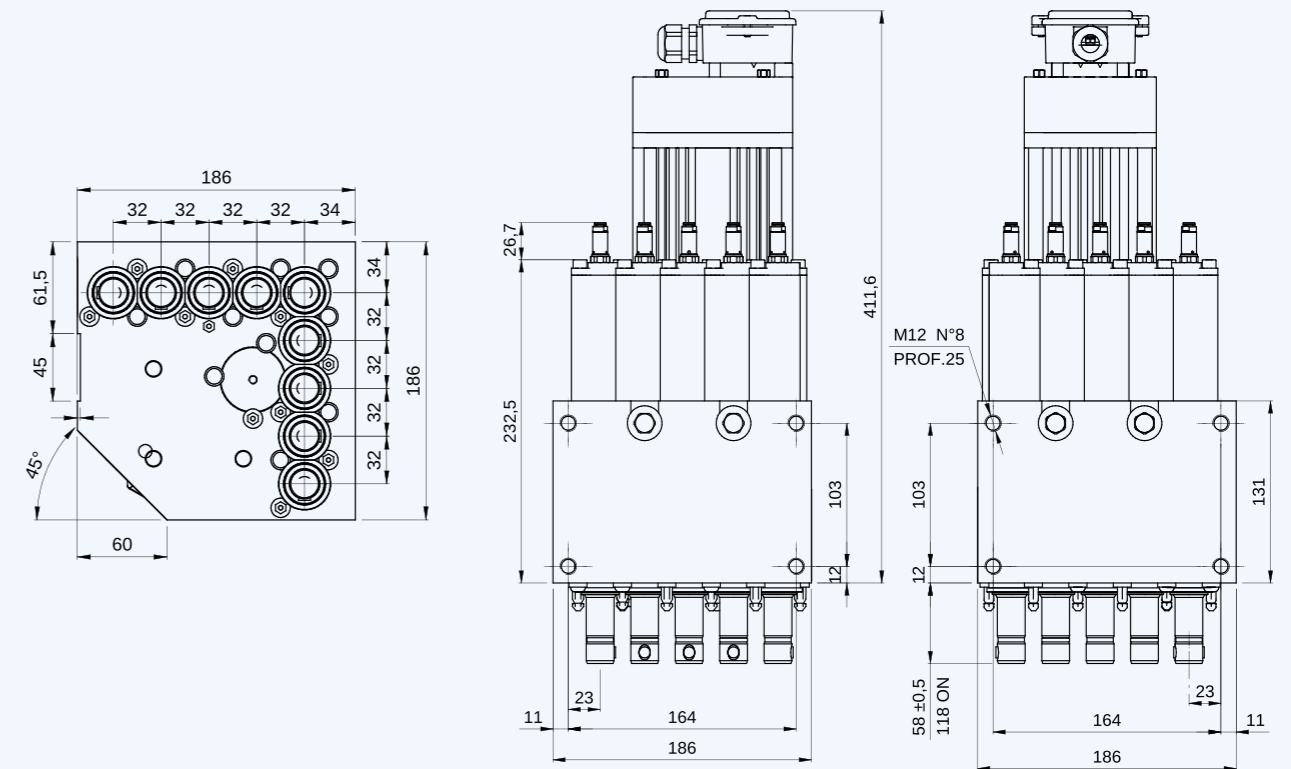
钻头接口 Tool connection	10 H7 mm
钻头轴距 Distance between centers	32 mm
钻头最大长度 Max boring bits lenght	70 mm
垂直主轴行程 Vertical spindles stroke	60 mm 
电机功率 Motor power	1,5 kW
垂直最大转速 Max vertical spindles speed	8.000 RPM
重量 Weight	25 kg



LAYOUT



LAYOUT



TF.B.7V.4H.2B.A

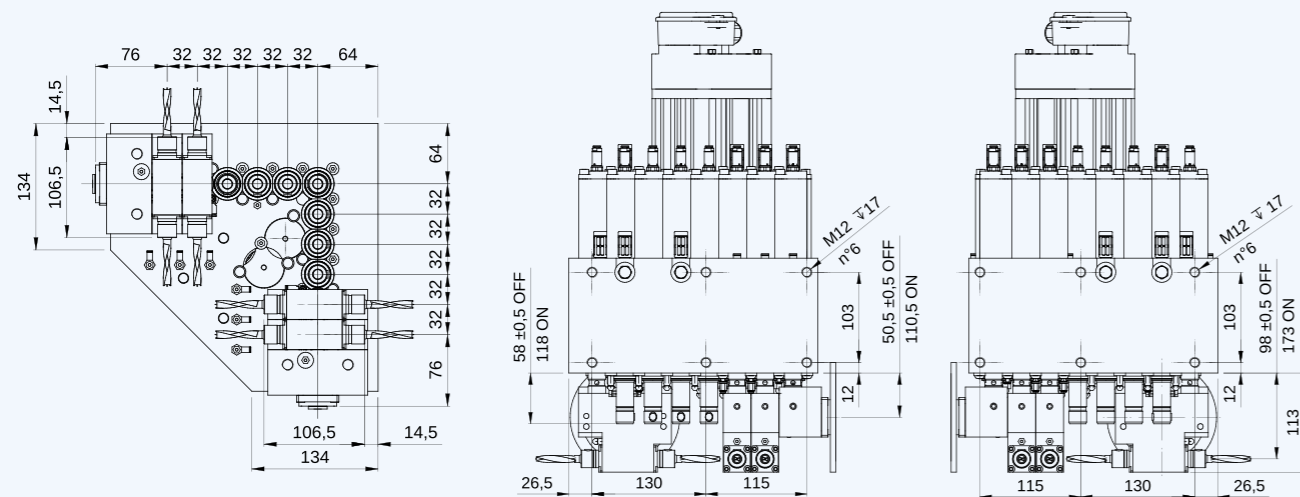
技术规格 TECHNICAL SPECIFICATIONS

钻头接口 Tool connection	10 H7 mm
钻头轴距 Distance between centers	32 mm
钻头最大长度 Max boring bits lenght	70 mm
垂直主轴行程 Vertical spindles stroke	60 mm 
水平主轴行程 Horizontal spindles stroke	75 mm
刀片组行程 Blade stroke	60 mm
电机功率 Motor power	1,7 kW
垂直最大转速 Max vertical spindles speed	8.000 RPM
水平最大转速 Max horizontal spindles speed	8.000 RPM
刀片最大转速 Max blade speed	10.000 RPM
刀片最大直径 Max saw blade ø	125 mm
重量 Weight	60 kg

AVAILABLE WITH



LAYOUT



TF.B.8V.3H.0B.A

技术规格 TECHNICAL SPECIFICATIONS

钻头接口 Tool connection	10 H7 mm
钻头轴距 Distance between centers	32 mm
钻头最大长度 Max boring bits lenght	70 mm
垂直主轴行程 Vertical spindles stroke	60 mm 
水平主轴行程 Horizontal spindles stroke	75 mm
电机功率 Motor power	1,7 kW
垂直最大转速 Max vertical spindles speed	8.000 RPM
水平最大转速 Max horizontal spindles speed	8.000 RPM
重量 Weight	50 kg



AVAILABLE WITH



TF.B.9V.3H.1B.A

技术规格 TECHNICAL SPECIFICATIONS

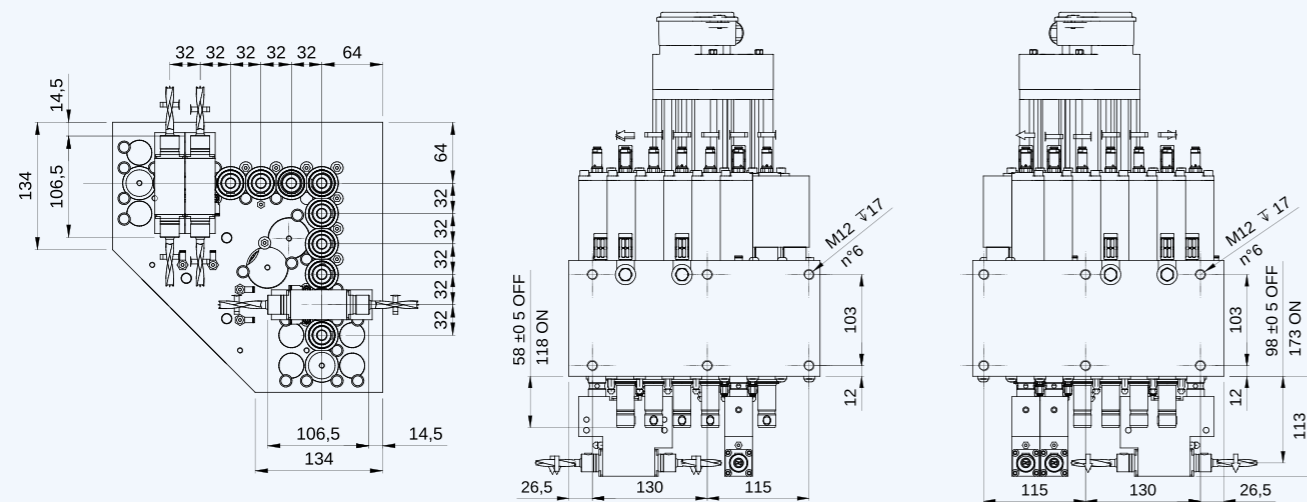
钻头接口 Tool connection	10 H7 mm
钻头轴距 Distance between centers	32 mm
钻头最大长度 Max boring bits lenght	70 mm
垂直主轴行程 Vertical spindles stroke	60 mm 
水平主轴行程 Horizontal spindles stroke	75 mm
刀片组行程 BDE stroke	60 mm
电机功率 Motor power	1,7 kW
垂直最大转速 Max vertical spindles speed	8.000 RPM
水平最大转速 Max horizontal spindles speed	8.000 RPM
刀片最大转速 Max blade speed	10.000 RPM
刀片最大直径 Max saw blade ø	125 mm
重量 Weight	60 kg



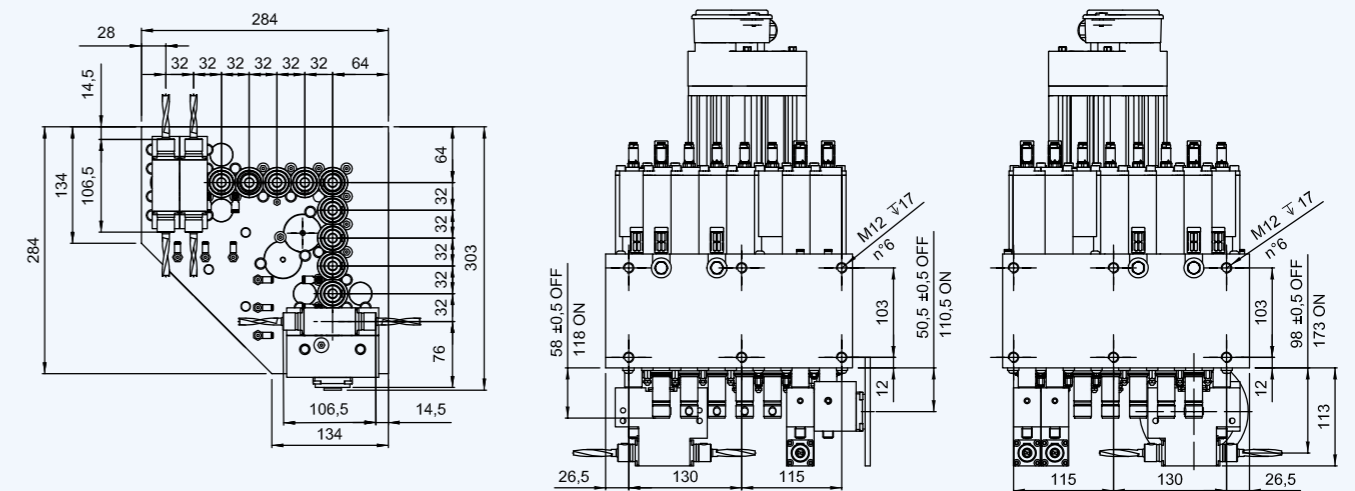
AVAILABLE WITH



LAYOUT



LAYOUT



TF.B.12V.0H.0B.A

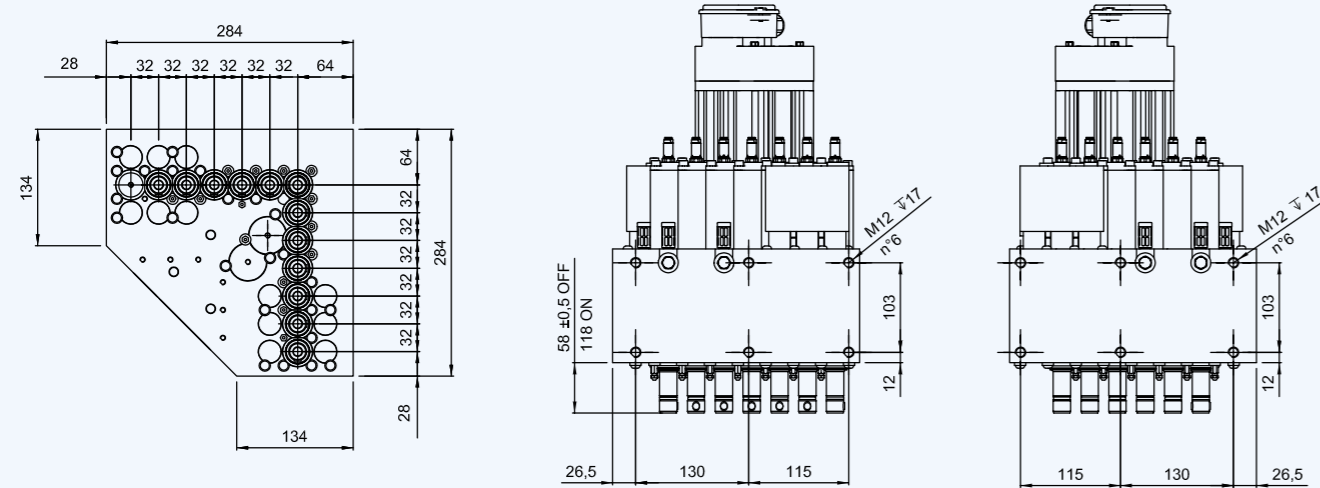
技术规格
TECHNICAL SPECIFICATIONS

钻头接口 Tool connection	10 H7 mm
钻头轴距 Distance between centers	32 mm
钻头最大长度 Max boring bits lenght	70 mm
垂直主轴行程 Vertical spindles stroke	60 mm 
电机功率 Motor power	1,7 kW
垂直最大转速 Max vertical spindles speed	8.000 RPM
重量 Weight	55 kg

AVAILABLE WITH



LAYOUT



TF.C.12V.4H.2B.A

技术规格 TECHNICAL SPECIFICATIONS

钻头接口 Tool connection	10 H7 mm
钻头轴距 Distance between centers	32 mm
钻头最大长度 Max boring bits lenght	70 mm
垂直主轴行程 Vertical spindles stroke	60 mm 
水平主轴行程 Horizontal spindles stroke	75 mm
刀片组行程 Blade stroke	60 mm
电机功率 Motor power	1,7 kW
垂直最大转速 Max vertical spindles speed	8.000 RPM
水平最大转速 Max horizontal spindles speed	8.000 RPM
刀片最大转速 Max blade speed	10.000 RPM
刀片最大直径 Max saw blade ø	125 mm
重量 Weight	60 kg



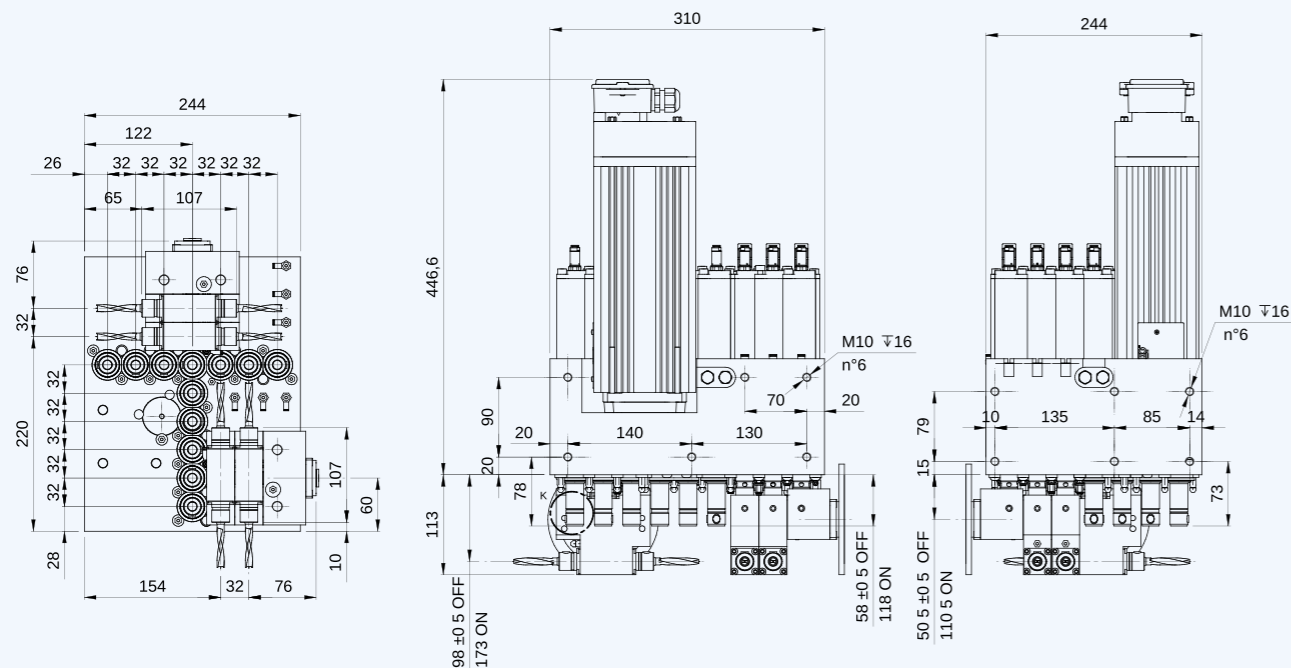
TF.C.12V.6H.0B.A

技术规格 TECHNICAL SPECIFICATIONS

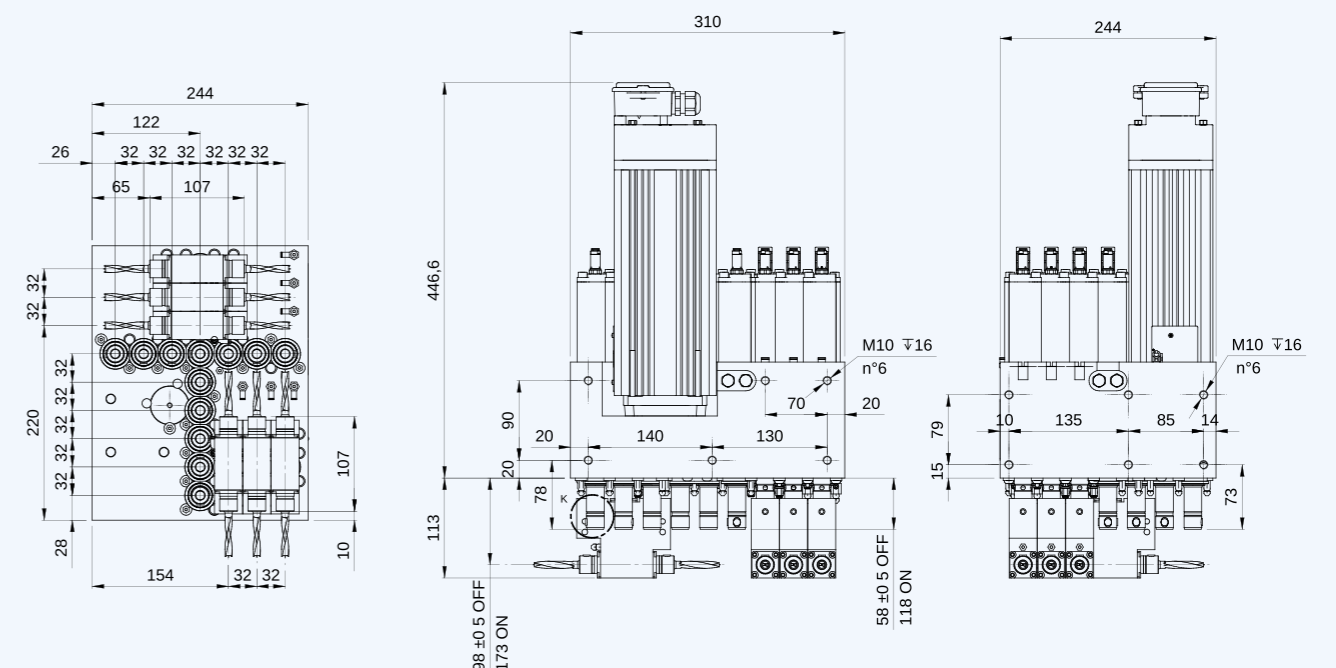
钻头接口 Tool connection	10 H7 mm
钻头轴距 Distance between centers	32 mm
钻头最大长度 Max boring bits lenght	70 mm
垂直主轴行程 Vertical spindles stroke	60 mm 
水平主轴行程 Horizontal spindles stroke	75 mm
电机功率 Motor power	1,7 kW
垂直最大转速 Max vertical spindles speed	8.000 RPM
水平最大转速 Max horizontal spindles speed	8.000 RPM
重量 Weight	60 kg



LAYOUT



LAYOUT



TF.C.14V.3H.1B.A

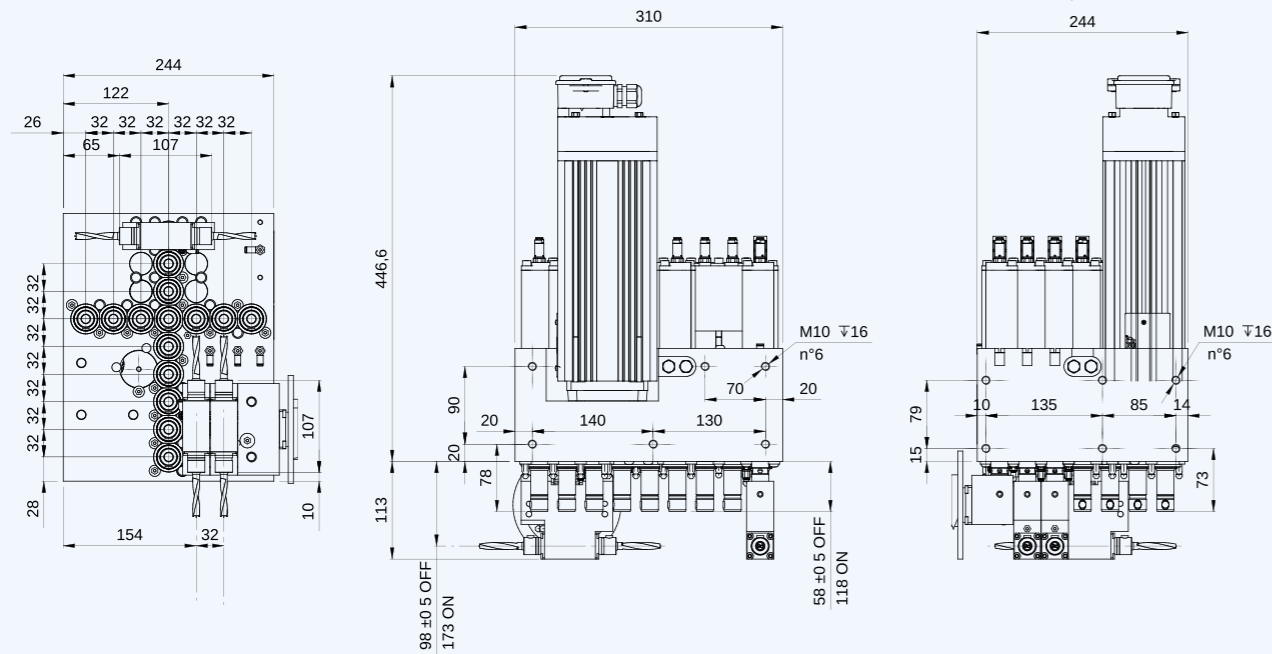
技术规格 TECHNICAL SPECIFICATIONS

钻头接口 Tool connection	10 H7 mm
钻头轴距 Distance between centers	32 mm
钻头最大长度 Max boring bits lenght	70 mm
垂直主轴行程 Vertical spindles stroke	60 mm 
水平主轴行程 Horizontal spindles stroke	75 mm
刀片组行程 Blade stroke	60 mm
电机功率 Motor power	1,7 kW
垂直最大转速 Max vertical spindles speed	8.000 RPM
水平最大转速 Max horizontal spindles speed	8.000 RPM
刀片最大转速 Max blade speed	10.000 RPM
刀片最大直径 Max saw blade Ø	125 mm
重量 Weight	50 kg

AVAILABLE WITH



LAYOUT



TF.C.16V.0H.2B.A

技术规格 TECHNICAL SPECIFICATIONS

钻头接口 Tool connection	10 H7 mm
钻头轴距 Distance between centers	32 mm
钻头最大长度 Max boring bits lenght	70 mm
垂直主轴行程 Vertical spindles stroke	60 mm 
刀片组行程 BDE stroke	60 mm
电机功率 Motor power	1,7 kW
垂直最大转速 Max vertical spindles speed	8.000 RPM
水平最大转速 Max horizontal spindles speed	8.000 RPM
刀片最大转速 Max blade speed	10.000 RPM
刀片最大直径 Max saw blade Ø	125 mm
重量 Weight	60 kg



AVAILABLE WITH



TF.D.9V.3H.1B.A

技术规格 TECHNICAL SPECIFICATIONS

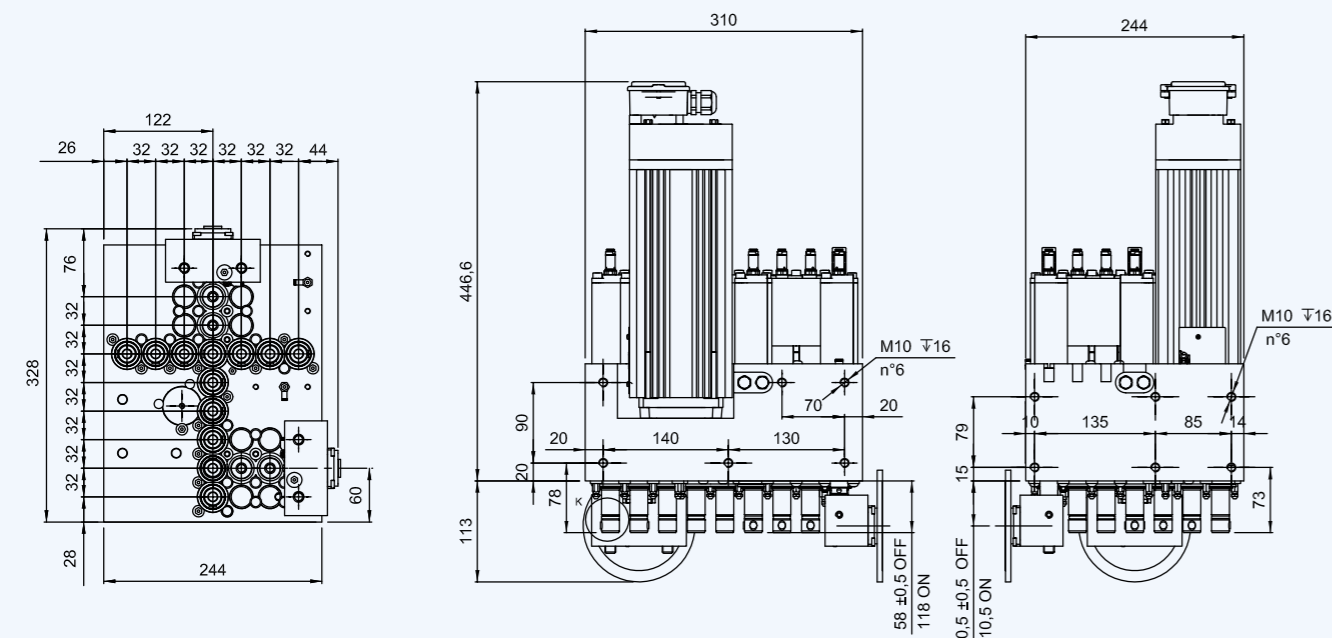
钻头接口 Tool connection	10 H7 mm
钻头轴距 Distance between centers	32 mm
钻头最大长度 Max boring bits lenght	70 mm
垂直主轴行程 Vertical spindles stroke	60 mm 
水平主轴行程 Horizontal spindles stroke	75 mm
刀片组行程 Blade stroke	60 mm
电机功率 Motor power	1,7 kW
垂直最大转速 Max vertical spindles speed	8.000 RPM
水平最大转速 Max horizontal spindles speed	8.000 RPM
刀片最大转速 Max blade speed	10.000 RPM
刀片最大直径 Max saw blade Ø	125 mm
重量 Weight	50 kg



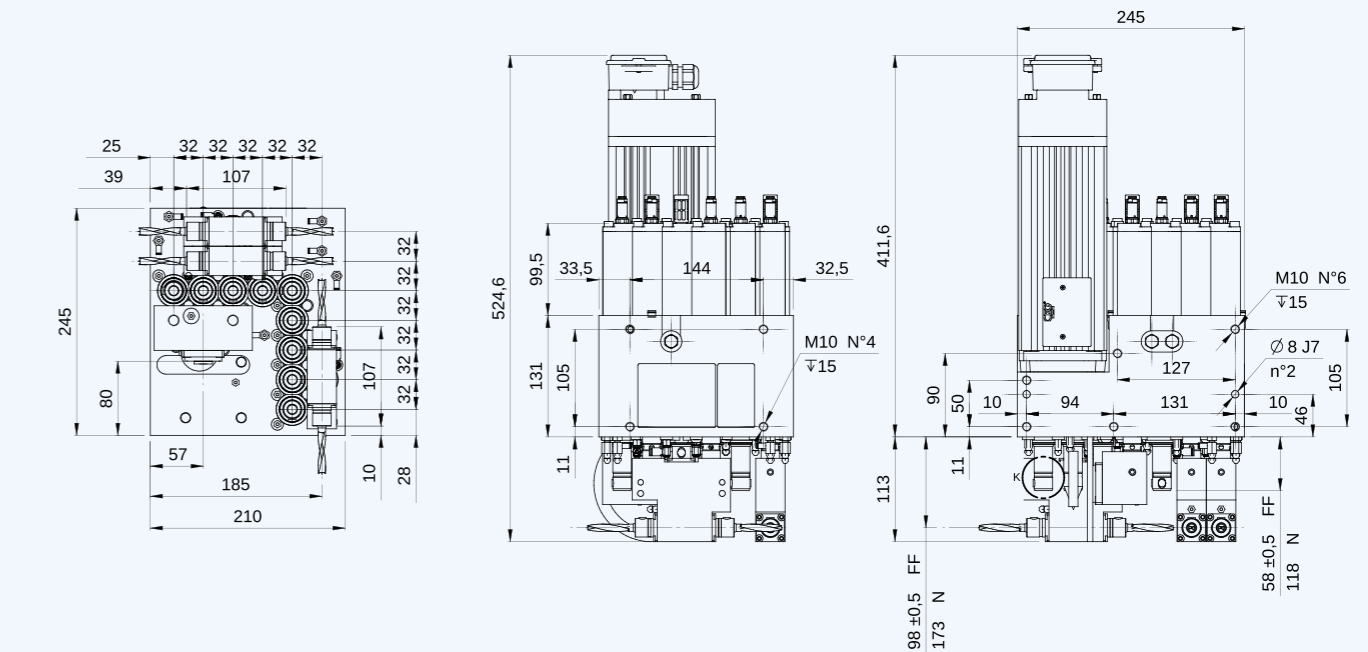
AVAILABLE WITH



LAYOUT



LAYOUT



TF.E.11V.4H.0B.A

技术规格 TECHNICAL SPECIFICATIONS

钻头接口 Tool connection	10 H7 mm
钻头轴距 Distance between centers	32 mm
钻头最大长度 Max boring bits lenght	70 mm
垂直主轴行程 Vertical spindles stroke	60 mm 
水平主轴行程 Horizontal spindles stroke	75 mm
电机功率 Motor power	1,7 kW
垂直最大转速 Max vertical spindles speed	8.000 RPM
水平最大转速 Max horizontal spindles speed	8.000 RPM
重量 Weight	65 kg



AVAILABLE WITH



TF.F.10V.3H.1B.A

技术规格 TECHNICAL SPECIFICATIONS

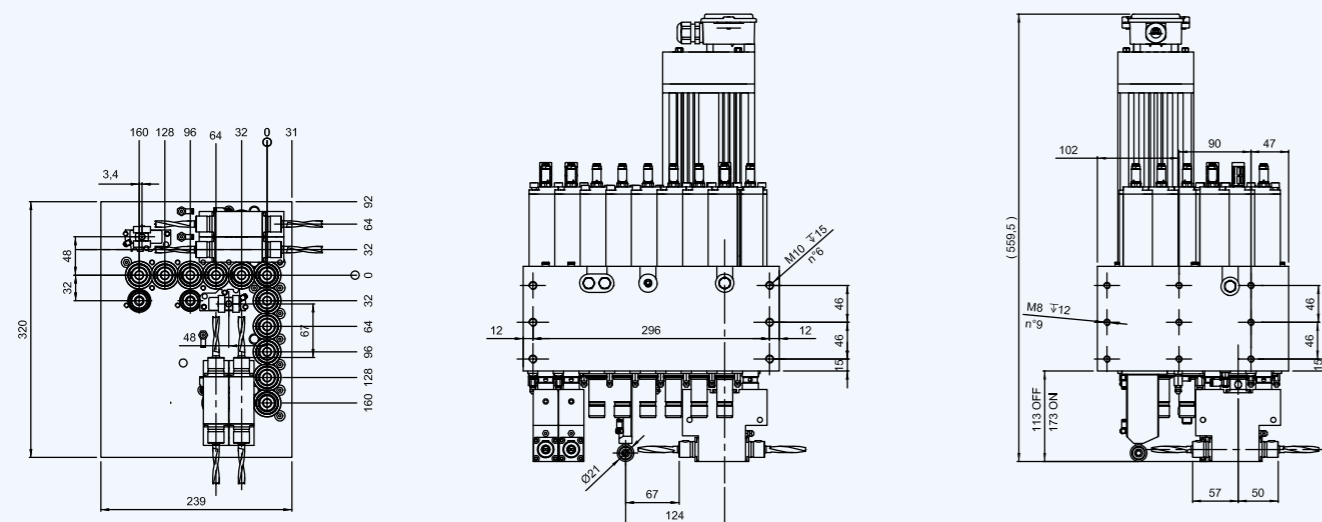
钻头接口 Tool connection	10 H7 mm
钻头轴距 Distance between centers	32 mm
钻头最大长度 Max boring bits lenght	70 mm
垂直主轴行程 Vertical spindles stroke	60 mm 
水平主轴行程 Horizontal spindles stroke	75 mm
刀片组行程 Blade stroke	60 mm
电机功率 Motor power	1,7 kW
垂直最大转速 Max vertical spindles speed	8.000 RPM
水平最大转速 Max horizontal spindles speed	8.000 RPM
刀片最大转速 Max blade speed	10.000 RPM
刀片最大直径 Max saw blade Ø	125 mm
重量 Weight	50 kg



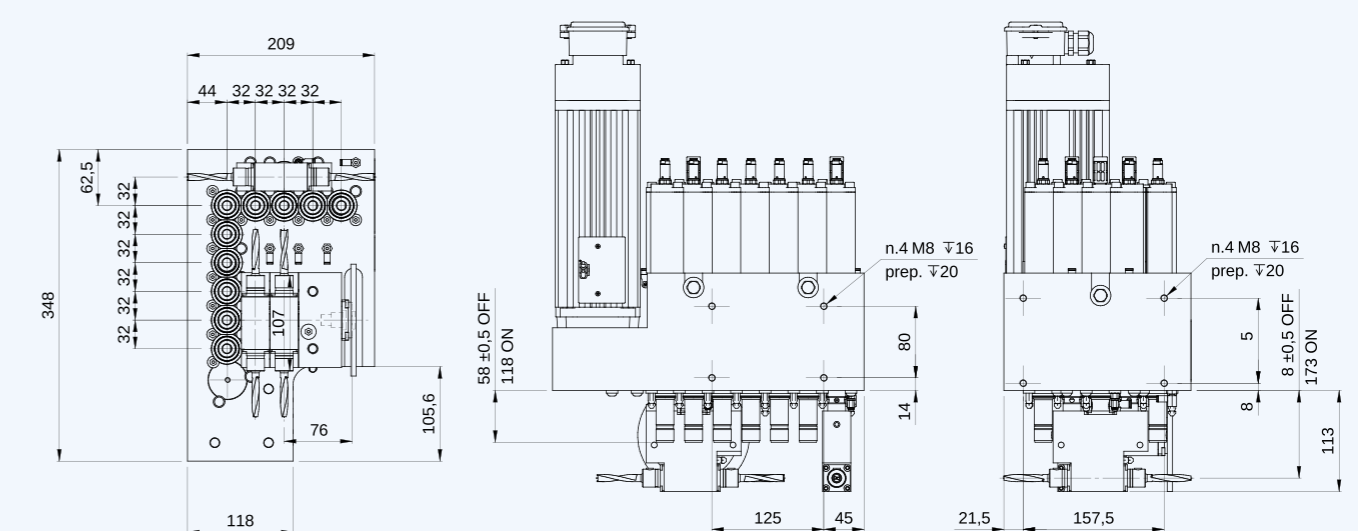
AVAILABLE WITH



LAYOUT



LAYOUT



TF.M.14V.0H.0B.A

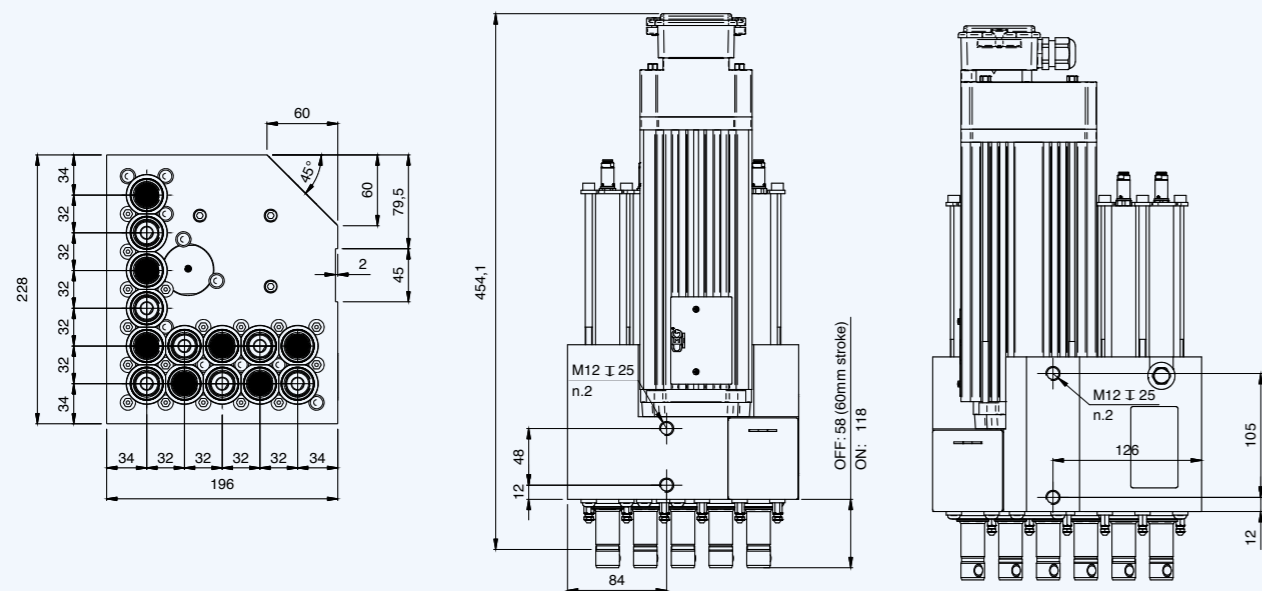
技术规格
TECHNICAL SPECIFICATIONS

钻头接口 Tool connection	10 H7 mm
钻头轴距 Distance between centers	32 mm
钻头最大长度 Max boring bits lenght	70 mm
垂直主轴行程 Vertical spindles stroke	60 mm OPT 75 mm
电机功率 Motor power	1,5 kW
垂直最大转速 Max vertical spindles speed	4.000 RPM
重量 Weight	37 kg

AVAILABLE WITH

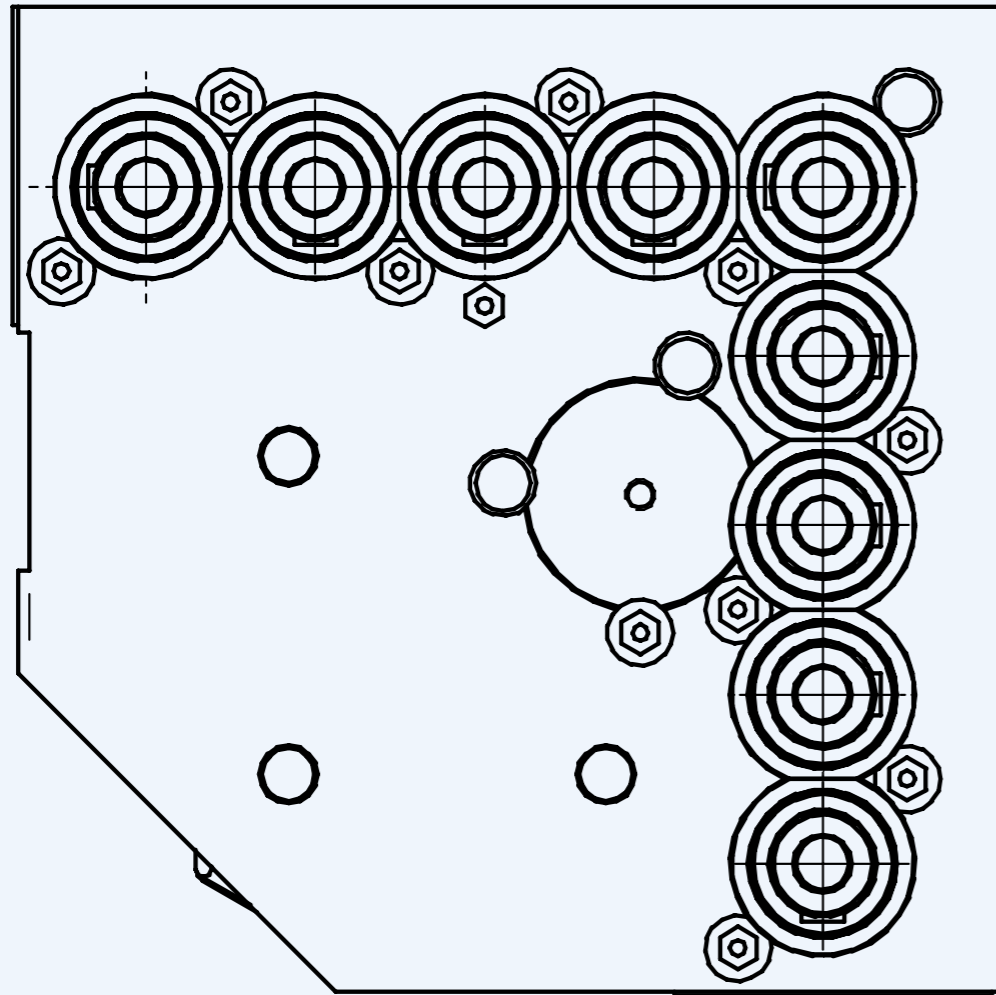


LAYOUT



配置A
A CONFIGURATION

TF.A_V.0H.0B



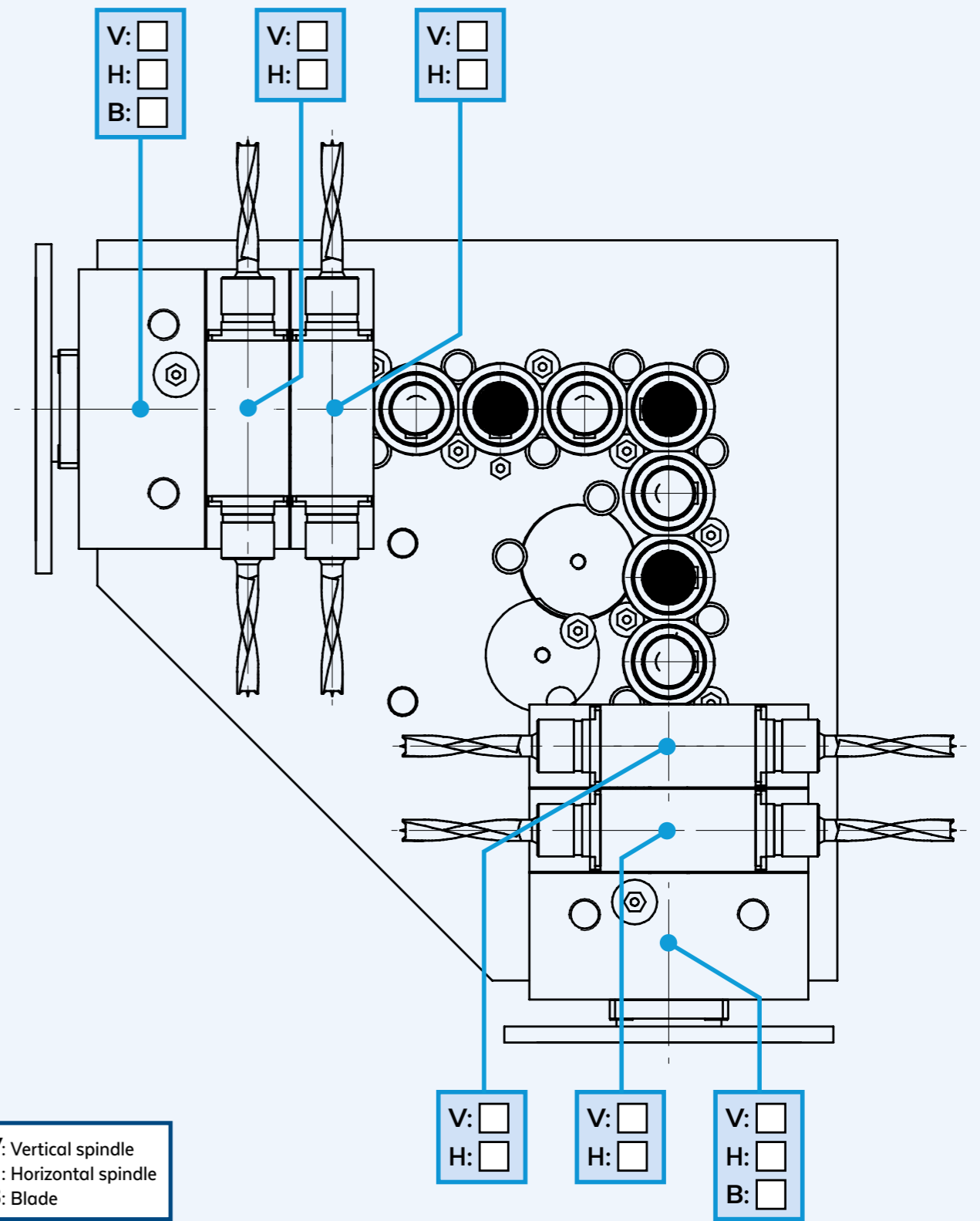
V: Vertical spindle

BORING UNIT IDENTIFICATION KEY

Model	Body Type	Vertical spindles	Horizontal spindles	Blade
TF	A	0	0

配置B
B CONFIGURATION

TF.B_V_H_B



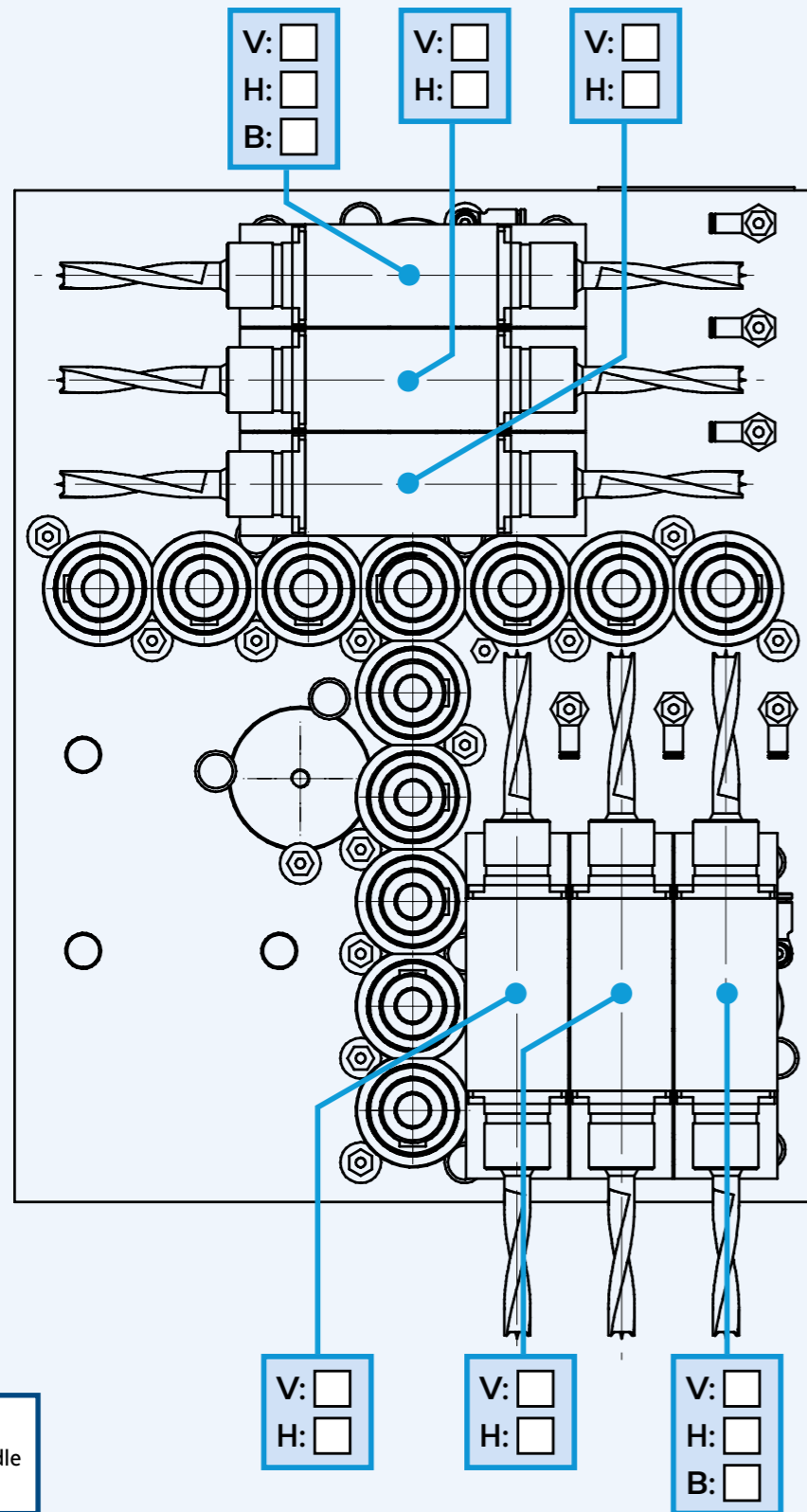
V: Vertical spindle
H: Horizontal spindle
B: Blade

BORING UNIT IDENTIFICATION KEY

Model	Body Type	Vertical spindles	Horizontal spindles	Blade
TF	B

配置C
C CONFIGURATION

TF.C_V.H_B

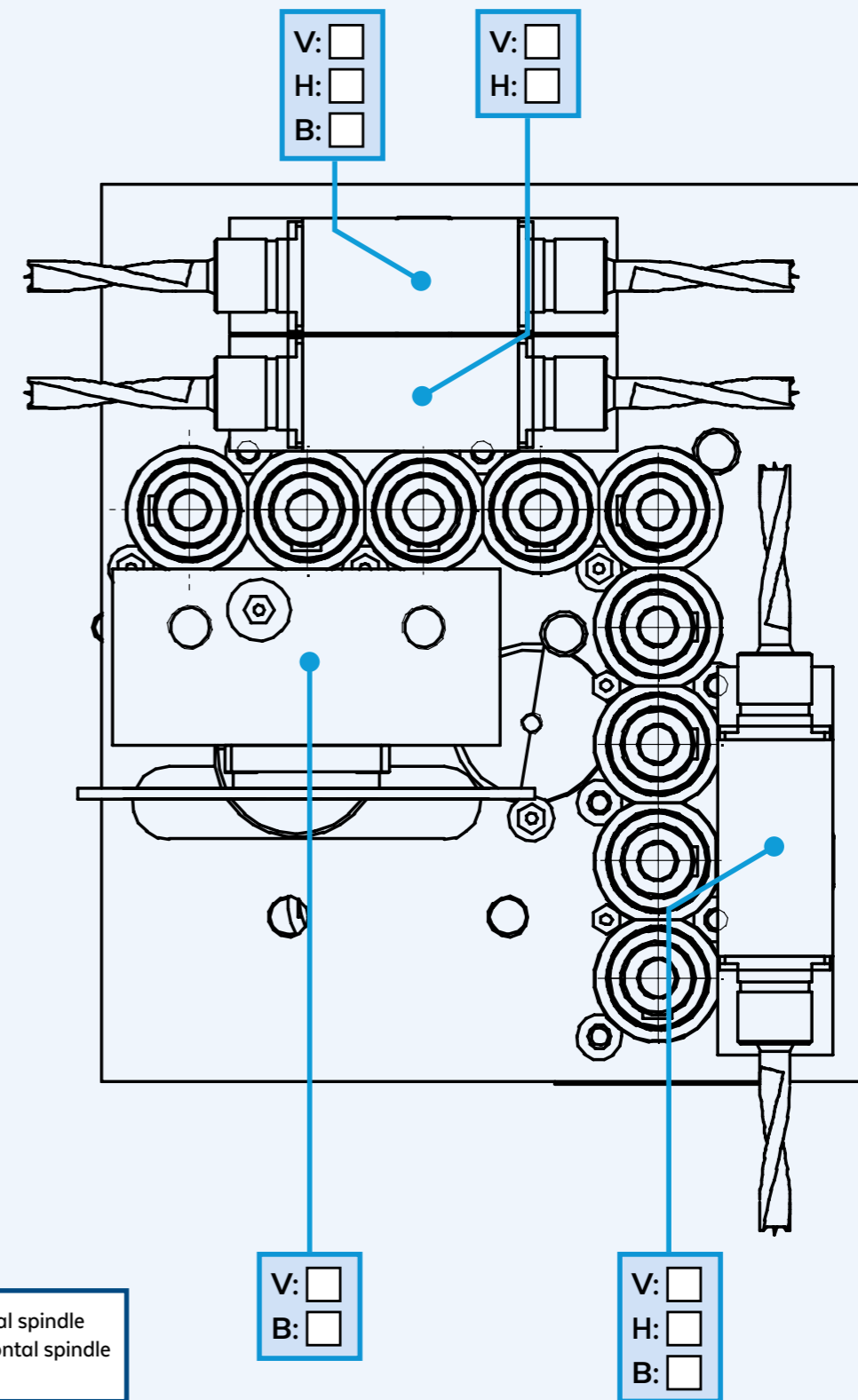


BORING UNIT IDENTIFICATION KEY

Model	Body Type	Vertical spindles	Horizontal spindles	Blade
TF	C

配置D
D CONFIGURATION

TF.D_V.H_B



BORING UNIT IDENTIFICATION KEY

Model	Body Type	Vertical spindles	Horizontal spindles	Blade
TF	D

HITECO

ss 258 Marecchia, 34 47826 Villa Verucchio, Rimini - Italia

tel. +39.0541.674940 - fax +39.0541.674962

www.hiteco.net