

SERIE TILT TILT W



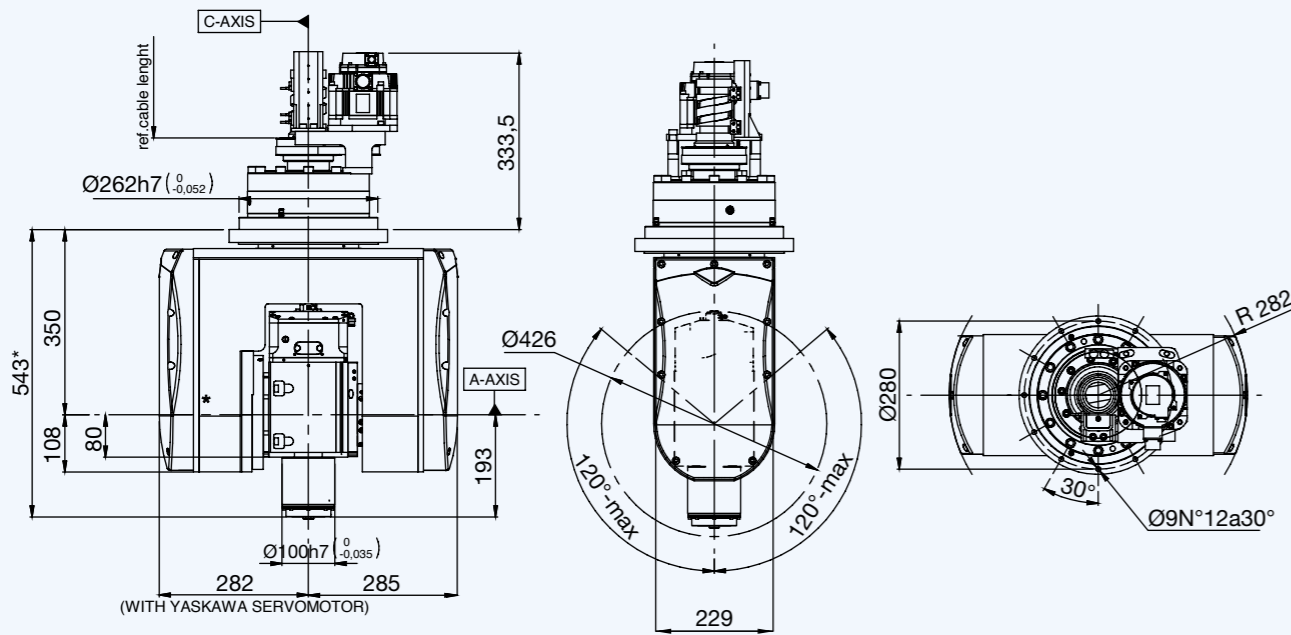
- LIGHT ALLOYS
- ADVANCED MATERIALS
- PLASTIC
- WOOD

SPECIFICHE TECNICHE / TECHNICAL SPECIFICATIONS

	ASSE A / A AXIS	ASSE C / C AXIS
Servomotore / Servomotor	Yaskawa	Yaskawa
Potenza servomotore / Servomotor power	0,75 kW	0,85 kW
Encoder servomotore / Servomotor encoder	Assoluto Absolute 20 Bit	Assoluto Absolute 20 Bit
Riduttore / Gearbox	Sumitomo	Sumitomo
Coppia max continua / Max. continuous torque	425 Nm	635 Nm
Coppia di picco / Peak torque	1030 Nm	1962 Nm
Max rotazione asse / Max axis rotation	±120°	±320°
Freni meccanici / Mechanical blocking of axes	Si Yes	Si Yes
Velocità posizionamento max / Max. positioning speed	10.000°/'	12.500°/'
Encoder assi / Axis encoder optional	Heidenhain	Heidenhain
Precisione / Accuracy	±30 arcsec (±5 arcsec)*	±30 arcsec (±5 arcsec)*
Ripetibilità / Repeatability	±10 arcsec (±5 arcsec)*	±10 arcsec (±5 arcsec)*
UtENZE / External air connections		n3
Peso / Weight		210 kg

*Con encoder assi / With encoder axis

LAYOUT

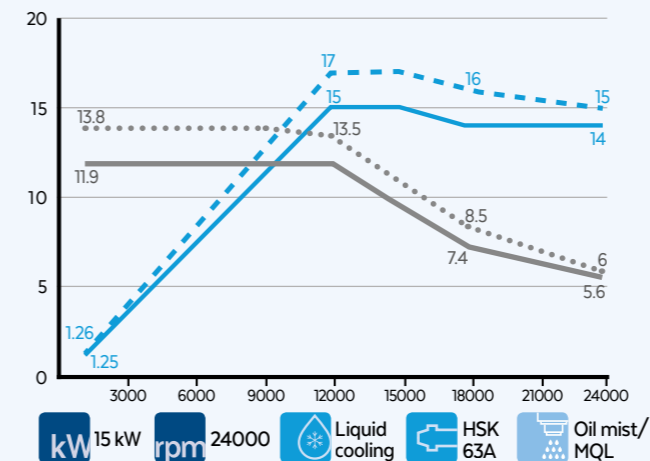


OPTIONALS DELL'ELETTROMANDRINO / ELECTROSPINDLE OPTIONS

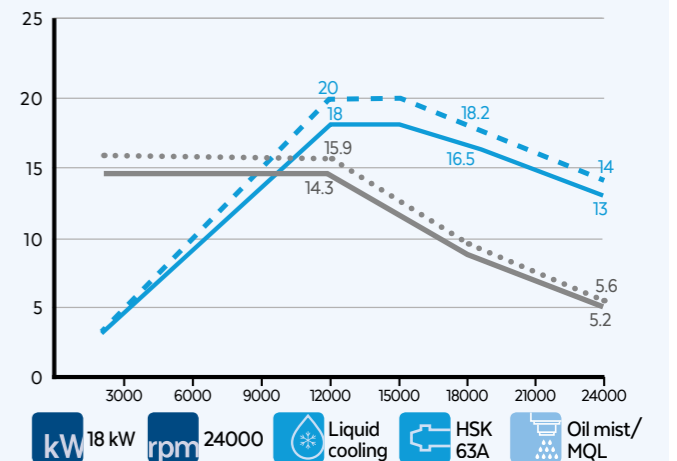
- Naso corto / Short nose
- HSK 63E
- HSK 63F
- Oil mist/ MQL
- Monitoraggio temperatura cuscinetti / Temperature monitoring of bearings
- Misuratore di velocità / Speed monitoring
- Sensori di vibrazione / Vibration sensor
- Air tool
- S1-S6 10-12 @7000 rpm
- S1-S6 12-14 @12000 rpm

ELETTROMANDRINI DISPONIBILI / AVAILABLE ELECTROSPINDLES

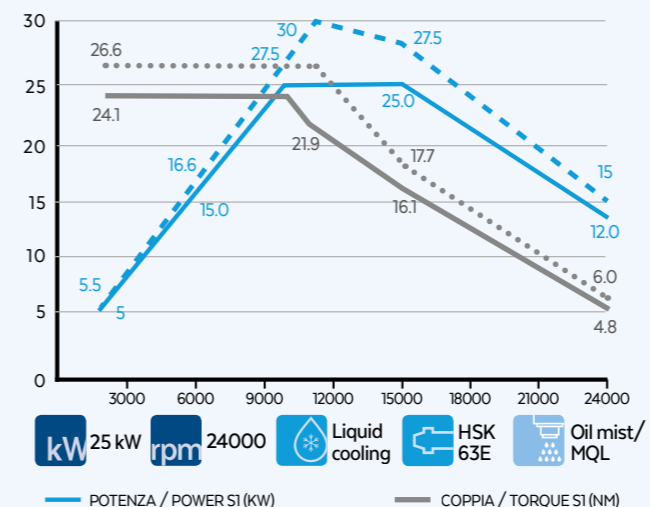
HX-2 15/12 24 63A ASYNCHRONOUS



HX-2 18/12 24 63A ASYNCHRONOUS



HT-2 25/10 24 ASYNCHRONOUS



HX-2 20/10 24 63A SYNCHRONOUS

