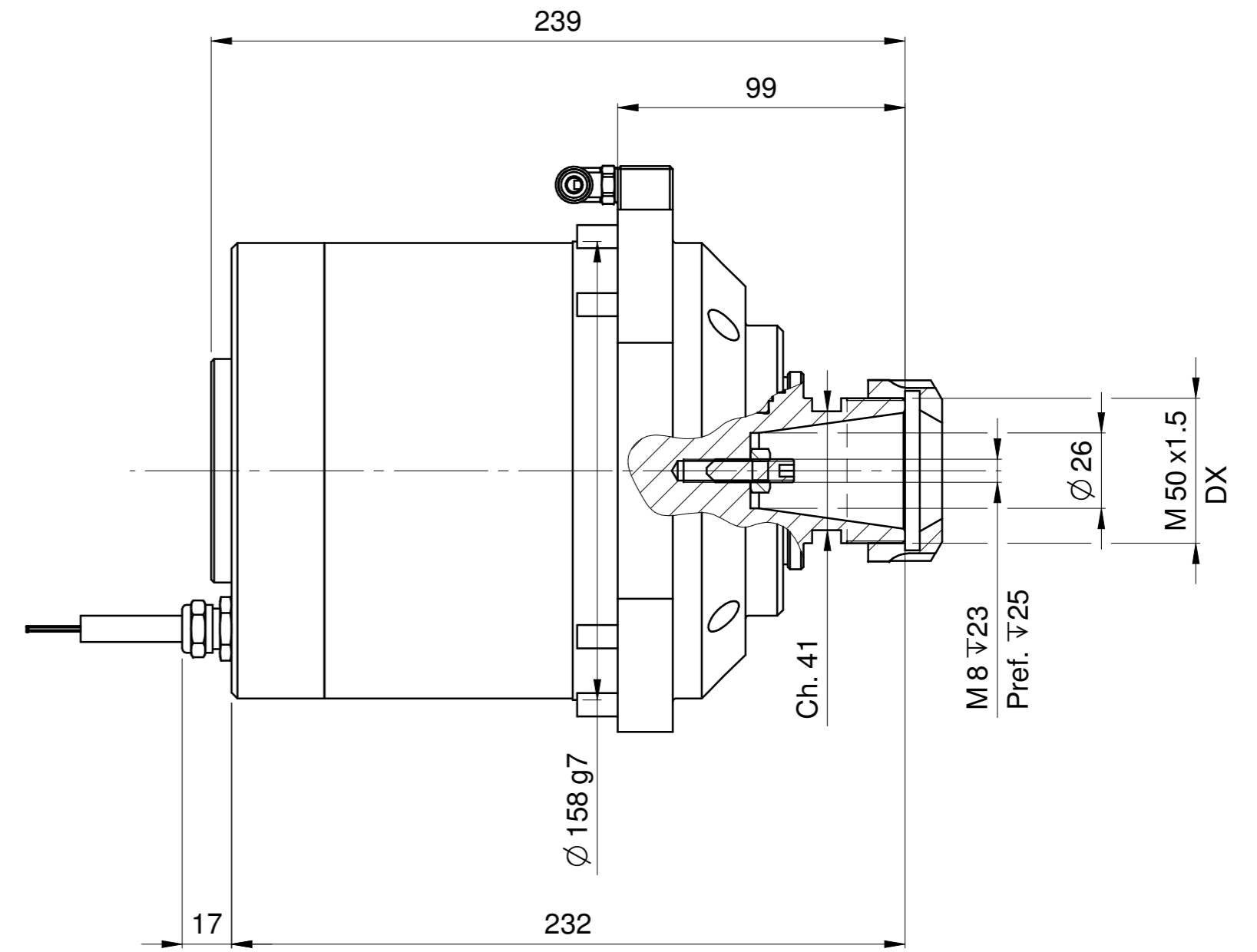
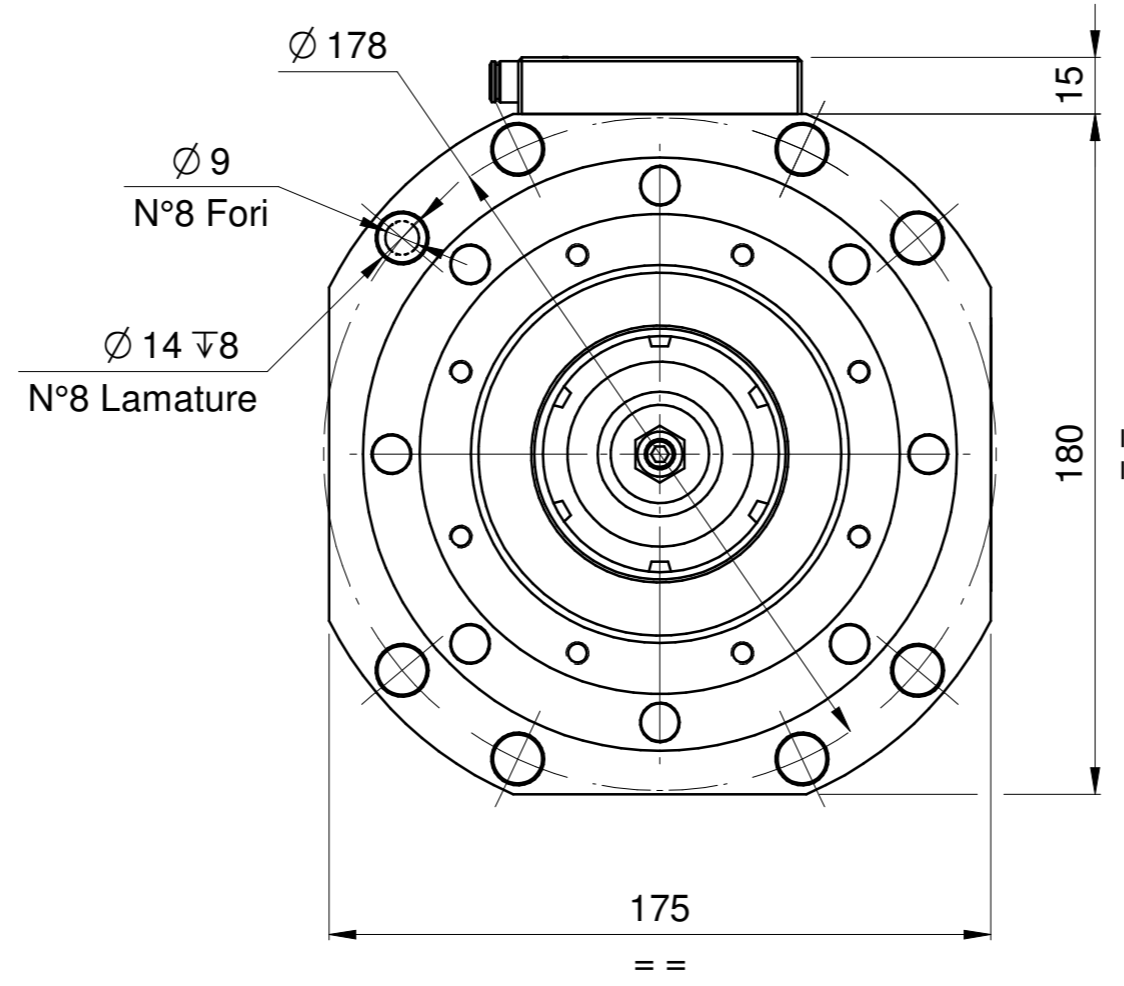
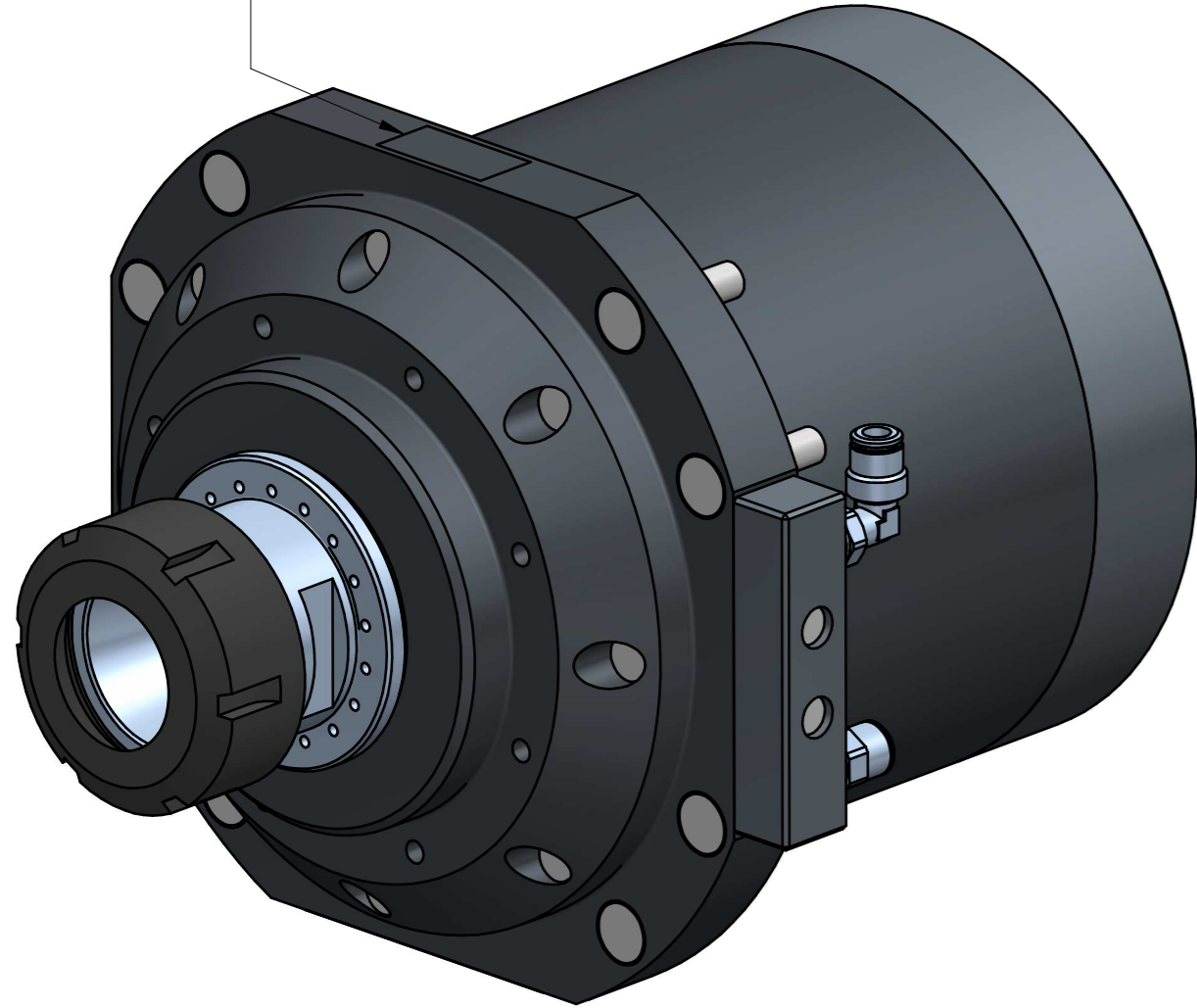


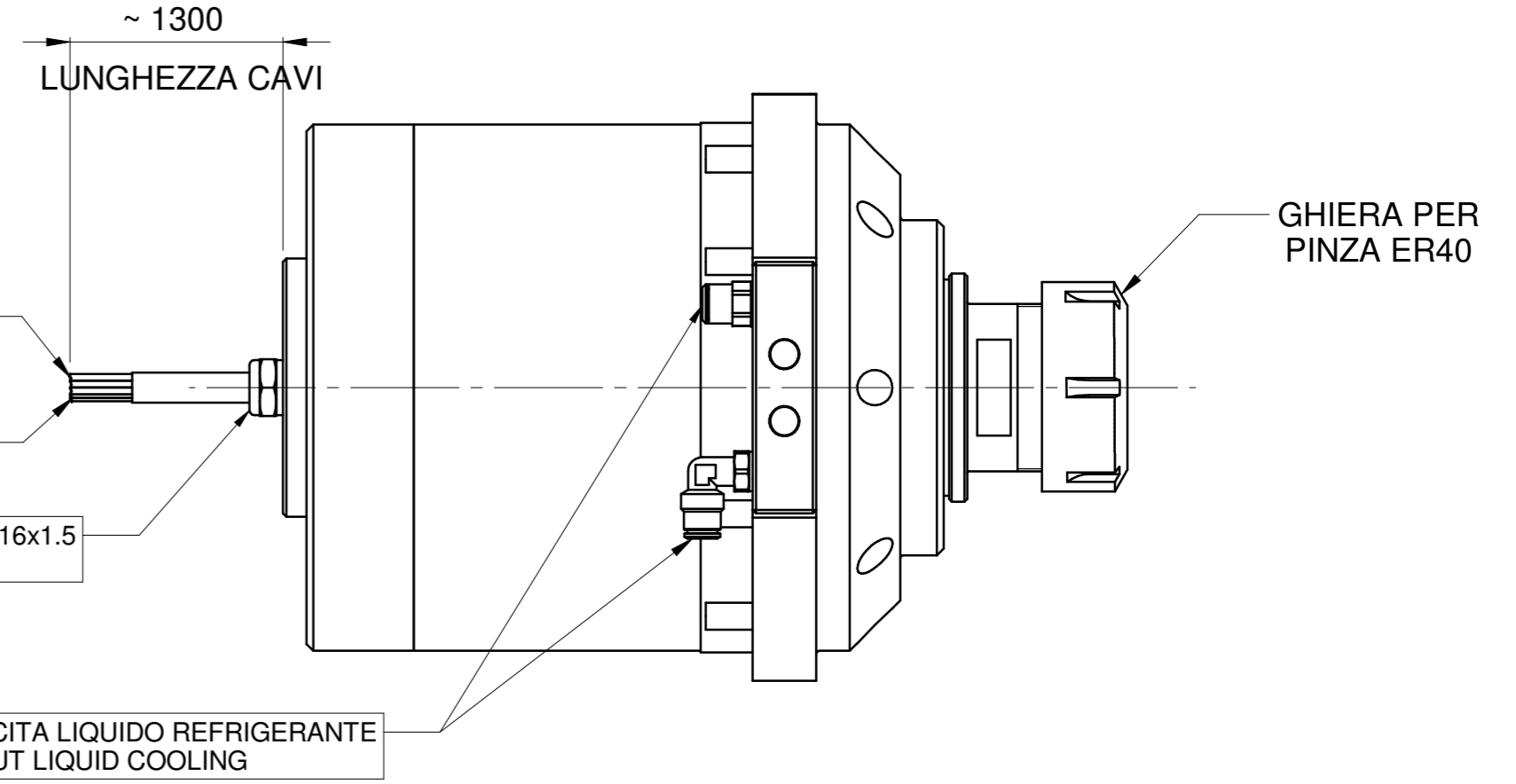
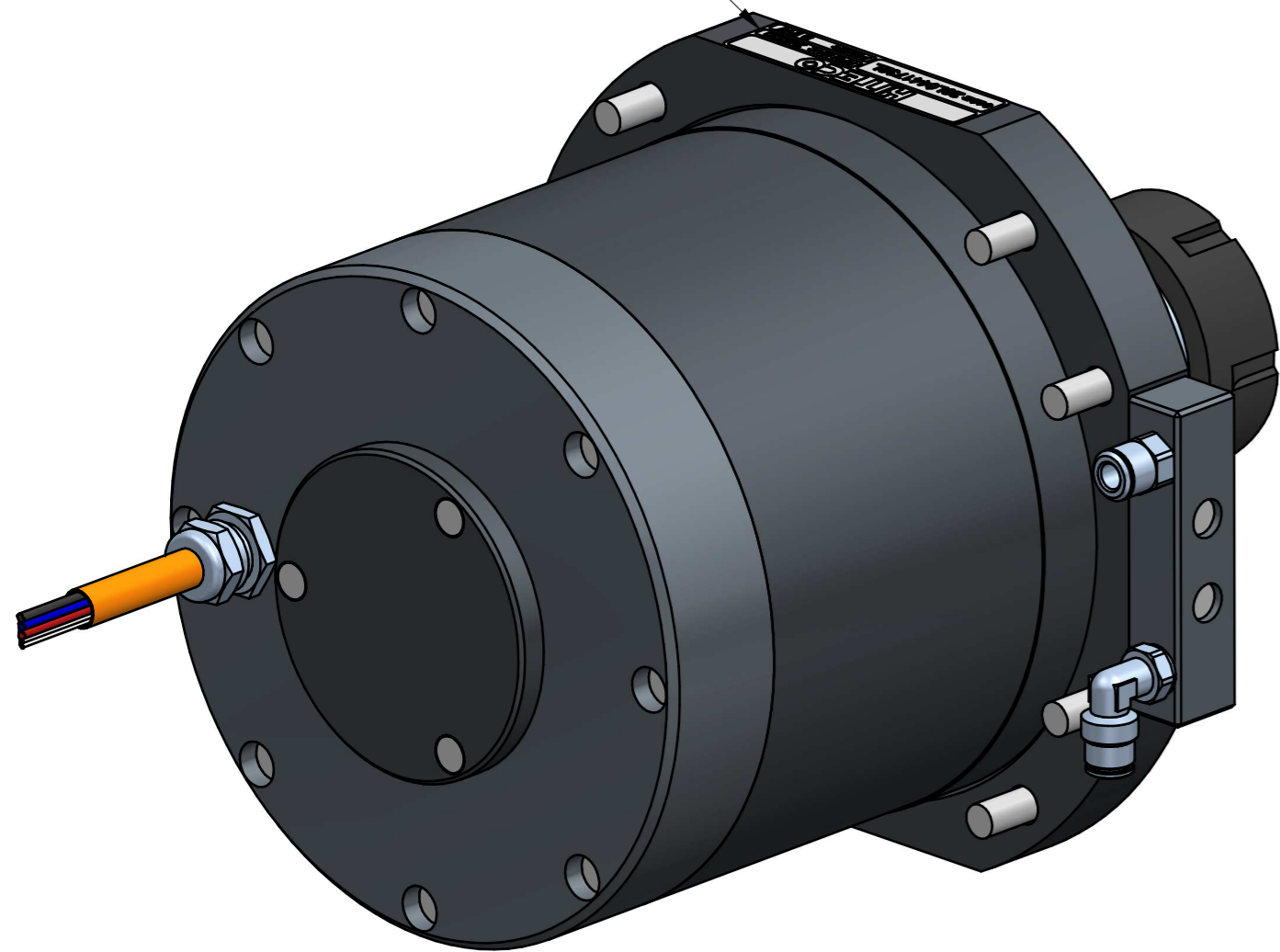
PUNZONARE SU FLANGIA  
STAMP ON FLANGE

ML XXXX YY/ZZ

XXXX = NUMERO SERIALE - SERIAL NUMBER  
YY = MESE DI PROD. - MONTH OF PROD.  
ZZ = ANNO DI PROD. - YEAR OF PROD.



TARGHETTA IDENTIFICATIVA  
Cod. 03L0441612L



CAVI POTENZA - POWER CABLES		
DESCRIZIONE - DESCRIPTION	COLORE - COLOR	SEZIONE - SECTION
U - FASE MOTORE - MOTOR PHASE	Nero - Black	2,5mmq
V - FASE MOTORE - MOTOR PHASE	Blu - Blue	2,5mmq
W - FASE MOTORE - MOTOR PHASE	Rosso - Red	2,5mmq
GND	Giallo/Verde - Yellow/Green	2,5mmq

PROTEZIONE TERMICA - THERMIC PROTECTION		
DESCRIZIONE - DESCRIPTION	COLORE - COLOR	SEZIONE - SECTION
SONDA TERMICA - THERMOSWITCH	Bianco - White	0,5mmq
SONDA TERMICA - THERMOSWITCH	Bianco - White	0,5mmq

01	19/07/2018	L.GUIDUCCI	TRANSCODIFICA CODICI 00C	CN20013
Rev	Data / Date	Firma / Signature	Descrizione ultima modifica / Last change description	N° Modifica / Change ID
<small>Caratteristiche tecniche non evidenziate secondo istruzione operativa SCM GROUP: IO 2310DTG Specifications not shown according to SCM GROUP operation instruction</small>			<small>Verniciatura / Painting ( SCM specific ST231DTG ) Superficie / Surface (m²)</small>	
<small>Strutture saldate secondo specifica SCM / Welded according to SCM specific: ST232DTG Fattori secondo specifica SCM / Factors secondo specific SCM specific: ST232DTG</small>			<small>Trattamento Superficiale / Surface Treatment ( SCM specifications ST234DTG )</small>	
<small>Quote senza indicazione di tolleranza, grado di precisione Dimensions without indication of tolerance, accuracy</small>			<small>Trattamento Termico / Heat Treatment ( SCM specifications ST234DTG )</small>	
<small>Ultimo rilascio Latest release</small>		<small>Firma / Signature</small>		<small>CF3</small>
<small>Controllato Checked by</small>		<small>Data / Date</small>		<small>Peso grezzo/Raw weight (kg)</small>
<small>Disegnato Designed by</small>		<small>Rugosità / Roughness</small>		<small>Ricavare da o Stato di fornitura / Based on or State of supply</small>
<small>G.Franchino*</small>		<small>05/02/2018</small>		<small>Smussi / chamfer</small>
<small>0</small>		<small>0</small>		<small>Massa / Mass (kg)</small>
<small>22,658</small>		<small>Denominazione / Item Name</small>		<small>Materiale / Material ( SCM specifications ST235DTG )</small>
<small>ELETM ML-2/9/12 24 ER40 DX</small>		<small>Scala / Scale</small>		<small>Vedi Tabella</small>
<small>1:1,5</small>		<small>Codice / Item ID</small>		<small>Rev</small>
<small>29L0441732L</small>		<small>01</small>		<small>Status</small>
<small>4/4</small>		<small>Tav. N. di N.</small>		

