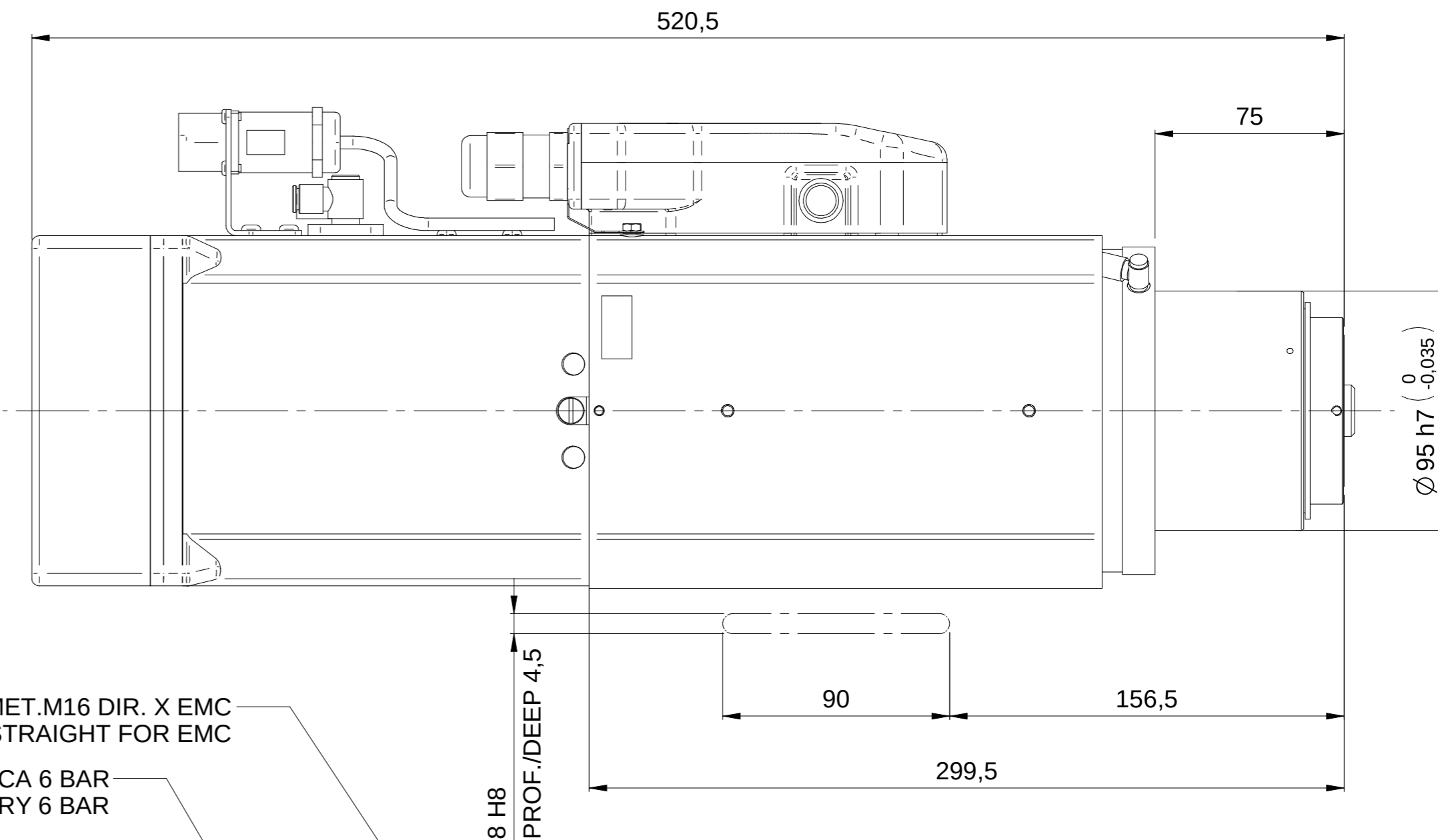
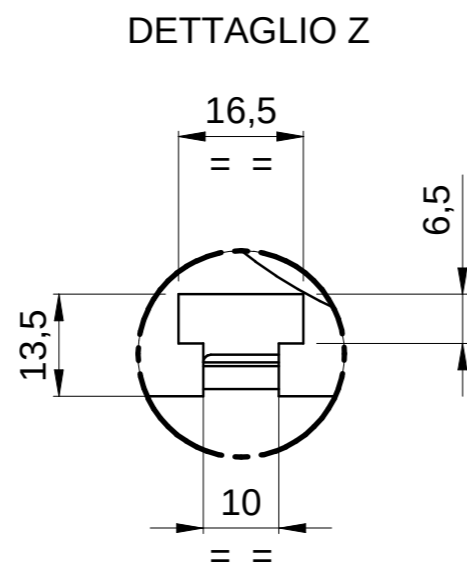


**ATTACCO HSK 63F DIN 69893-6  
TOOL INTERFACE HSK 63F DIN 69893-6**



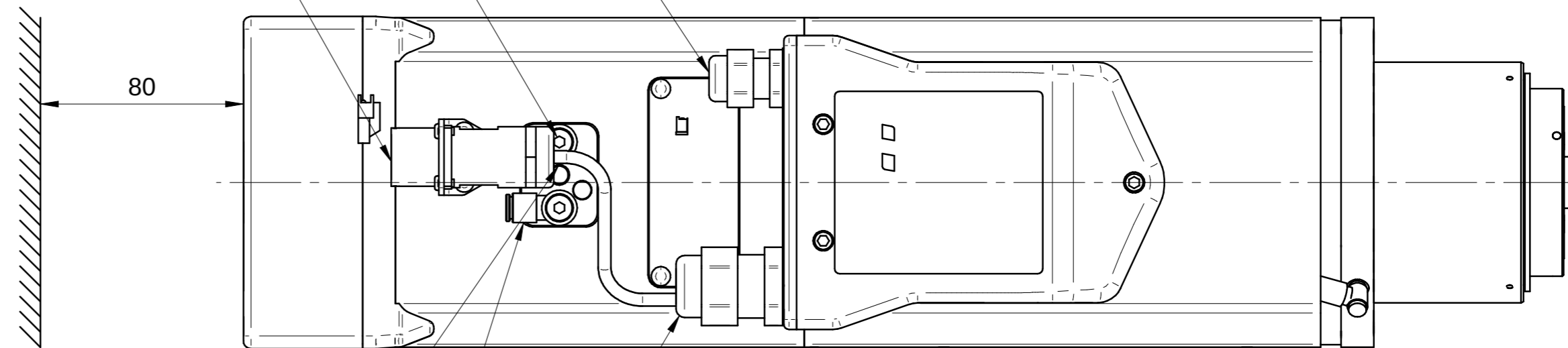
PRESSACAVO MET.M16 DIR. X EMC  
METALLIC GLAND M16 STRAIGHT FOR EMC

SOFFIO CONO: E6 ARIA SECCA 6 BAR  
TAPER CLEANING: E6 AIR DRY 6 BAR

CONNETTORE CIRCOLARE  
M23 SEGNALE 17 VIE  
CIRCULAR CONNECTORS  
M23 SIGNAL 17 CONTACTS

**ENCODER TTL 5V 512 IMULS/GIRO + IMPULSO RIFERIMENTO  
ENCODER TTL 5V 512 CYCLES/REV + REFERENCE MARK**

**TARGHETTA IDENTIFICATIVA  
IDENTIFICATION PLATE**

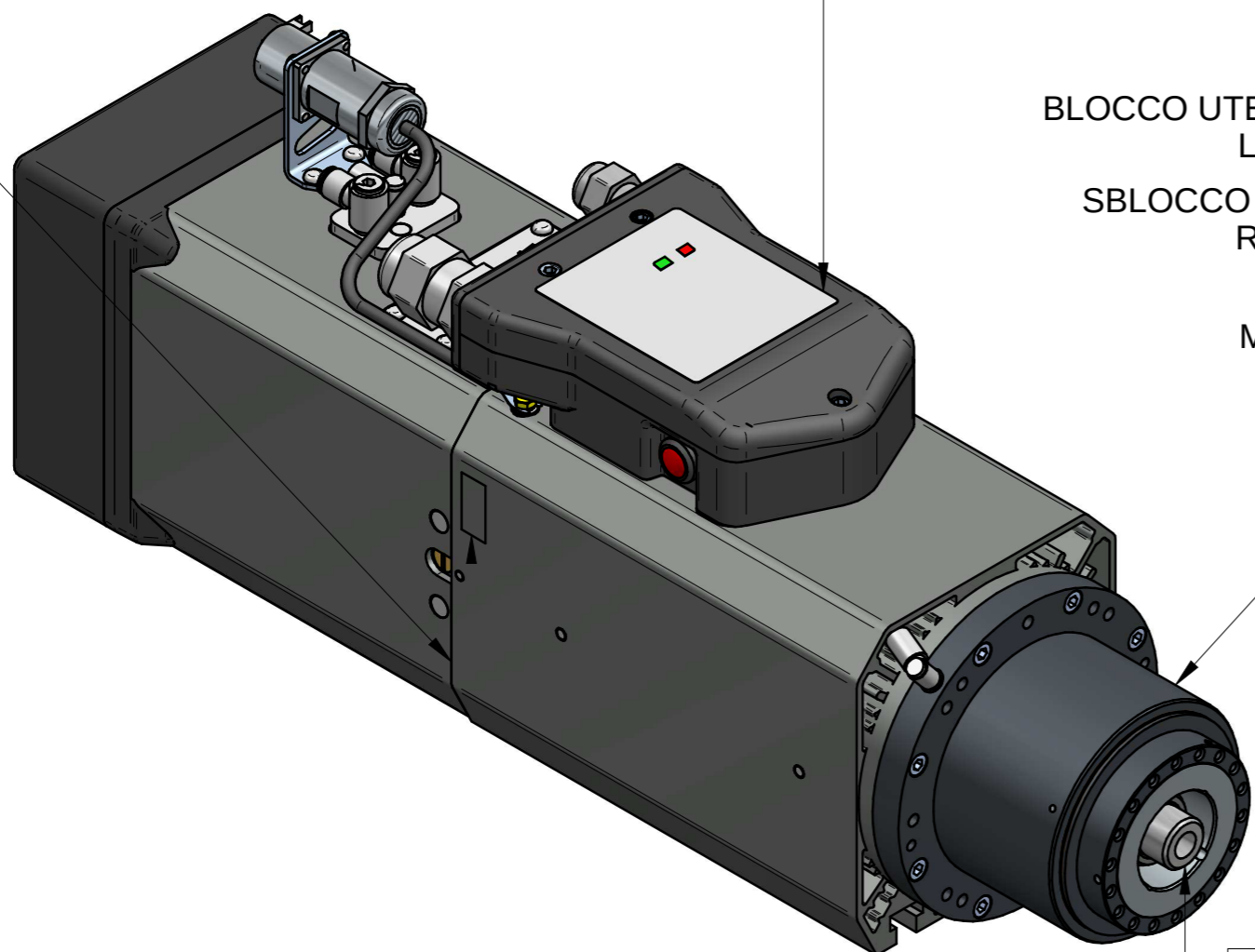


BLOCCO UTENSILE: E4 ARIA SECCA 6 BAR  
LOCK TOOL: E4 AIR DRY 6 BAR

SBLOCCO UTENSILE: E6 ARIA SECCA 6 BAR  
RELEASE TOOL: E6 AIR DRY 6 BAR

PRESSACAVO MET.M25 DIR. X EMC  
METALLIC GLAND M25 STRAIGHT FOR EMC

**ELETTROMANDRINO  
ELECTROSPINDLE**



**ATTACCO HSK 63F DIN 69893-6  
TOOL INTERFACE HSK 63F DIN 69893-6**

Rev	Data / Date	Firma / Signature	Descrizione ultima modifica / Last change description	N° Modifica / Change ID
Caratteristiche tecniche non evidenziate secondo istruzioni operative SCM GROUP Specifications not shown according to SCM GROUP operation instruction			Verniciatura / Painting ( SCM specific ST231D TG ) <b>VER000</b>	Superficie / Surface (m²)
Struttura saldata secondo specifica SCM / Welded according to SCM specific : ST232DTG Futuro secondo specifica SCM / Mergers secondo SCM specific : ST233DTG			Trattamento Superficiale / Surface Treatment ( SCM specific ST234DTG )	
Quote senza indicazione di tolleranza, grado di precisione Shares without indication of tolerance, accuracy			<b>SCM Specifica ST2310DTG</b>	
Ultimo rilascio Latest release			Rugosità / Roughness	Trattamento Termico / Heat Treatment ( SCM specific ST234DTG )
Controllato Checker			<b>CF3</b>	Peso grezzo/Raw weight (kg)
Disegnato Designed			Smussi / chamfer	Massa / Mass (kg)
<b>L.Guiducci</b>			<b>10/06/2016</b>	<b>28,289</b>
<b>HITECO</b> HIGH TECHNOLOGY COMPONENTS			Denominazione / Item Name <b>ELETM QE-1F 10/11 24 63F NC CB EN</b>	Codice / Item ID <b>QE.400.A10.00</b>
Template version: 12			Scala / Scale <b>1:2</b>	Rev <b>00</b>
C) RISERVIAMO A TERMI DI LEGGE LA PROPRIETA' DI QUESTO DISEGNO CON DIVIETO DI RENDERSI COMUNQUE NOTO A TERZI SENZA LA NOSTRA PREVENTIVA APPROVAZIONE. DRAWING IS SCM-PROPERTY. COPYRIGHTED MATERIAL. DISCLOSURE TO THIRD PARTIES WITHOUT OUR AUTHORISATION IS EXPLICITLY FORBIDDEN.			Status <b>1/1</b>	Tav. N. di N. <b>1/1</b>