

SERIE TILT TILT W

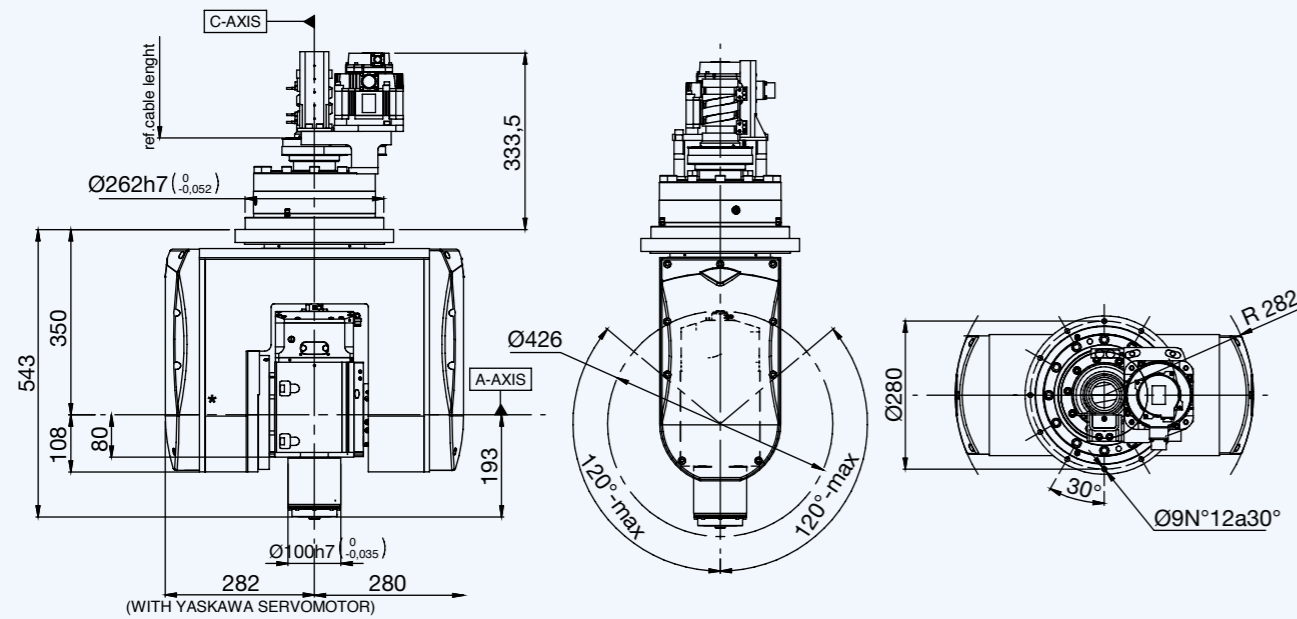


- LIGHT ALLOYS
- ADVANCED MATERIALS
- PLASTIC
- WOOD

SPECIFICHE TECNICHE / TECHNICAL SPECIFICATIONS

| | ASSE A / A AXIS | ASSE C / C AXIS |
|--|--------------------------|--------------------------|
| Servomotore / Servomotor | Yaskawa | Yaskawa |
| Potenza servomotore / Servomotor power | 0,75 kW | 0,85 kW |
| Encoder servomotore / Servomotor encoder | Assoluto Absolute 20 Bit | Assoluto Absolute 20 Bit |
| Riduttore / Gearbox | Sumitomo | Sumitomo |
| Coppia max continua / Max. continuous torque | 425 Nm | 635 Nm |
| Coppia di picco / Peak torque | 1030 Nm | 1962 Nm |
| Max rotazione asse / Max axis rotation | ±120° | ±320° |
| Freni meccanici / Mechanical blocking of axes | Si Yes | Si Yes |
| Velocità posizionamento max / Max. positioning speed | 10.000°/' | 12.500°/' |
| Encoder assi / Axis encoder optional | Heidenhain | Heidenhain |
| Precisione / Accuracy | 30 arcsec | 30 arcsec |
| Ripetibilità / Repeatability | 10 arcsec | 10 arcsec |
| UtENZE / External air connections | | n2 |
| Peso / Weight | | 210 kg |

LAYOUT

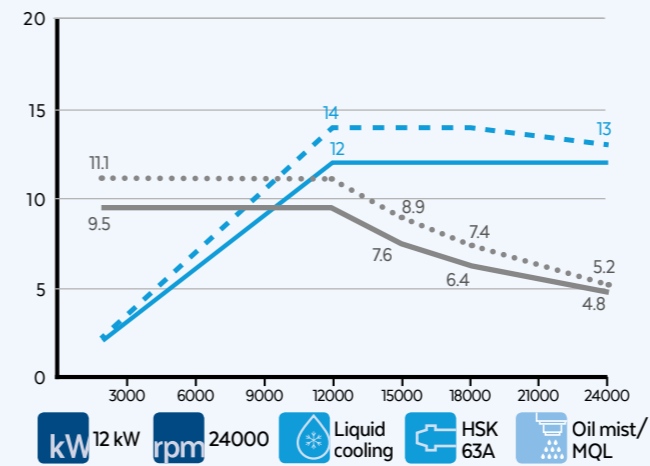


OPTIONALS DELL'ELETTROMANDRINO / ELECTROSPINDLE OPTIONS

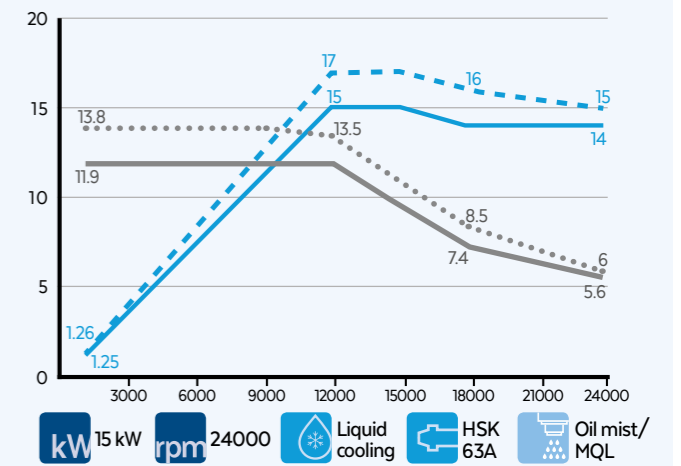
- Naso corto Short nose
- HSK 63E
- HSK 63F
- Oil mist/MQL
- Monitoraggio temperatura cuscinetti Temperature monitoring of bearings
- Misuratore di velocità Speed monitoring
- Sensori di vibrazione Vibration sensor
- Air tool
- S1-S6 10-12 @7000 rpm

ELETTROMANDRINI DISPONIBILI / AVAILABLE ELECTROSPINDLES

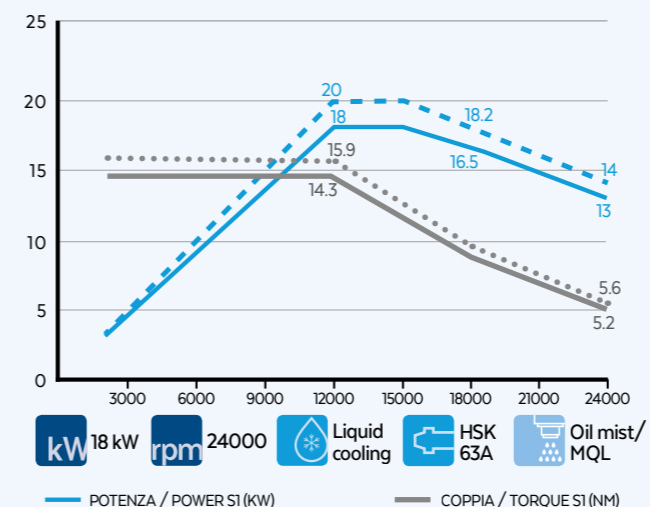
HX-2 12/12 24 63A



HX-2 15/12 24 63A



HX-2 18/12 24 63A



HX-2 20/10 24 63A SYNCHRONOUS

